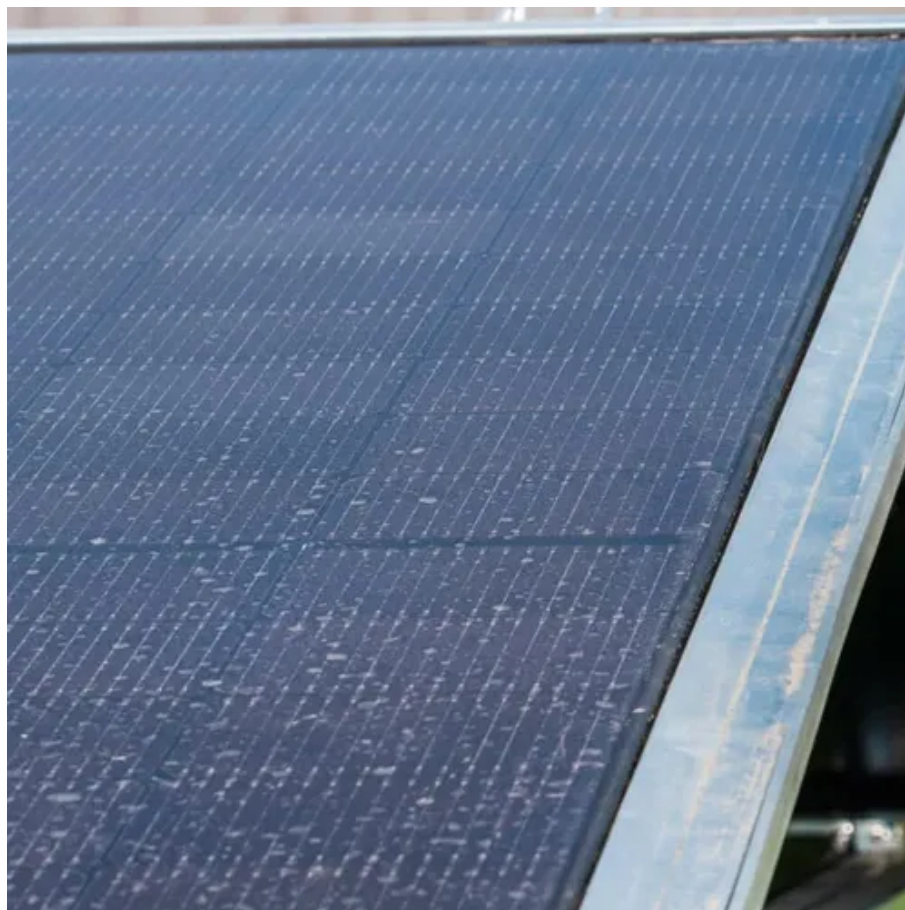




1000kg flywheel energy storage





Overview

First-generation flywheel energy-storage systems use a large steel flywheel rotating on mechanical bearings. Newer systems use carbon-fiber composite rotors that have a higher tensile strength than steel and can store much more energy for the same mass. Overview Flywheel energy storage (FES) works by spinning a rotor () and maintaining the energy in the system as . When energy is extracted from the system, the flywheel's rotational speed is reduced a. A typical system consists of a flywheel supported by connected to a . The flywheel and sometimes motor-generator may be enclosed in a to reduce fricti. Compared with other ways to store electricity, FES systems have long lifetimes (lasting decades with little or no maintenance; full-cycle lifetimes quoted for flywheels range from in excess of 10, up to 10, cycles.



1000kg flywheel energy storage

Technology: Flywheel Energy Storage

Large synchronous flywheels are also used for energy storage, yet not to be mistaken with FESS. They use very large flywheels with a mass in the order of 100 tonnes. These are directly connected to a ...



[Flywheel Energy Storage Explained: Fast, Durable And Reliable Grid](#)

Readers will gain insight into how these systems compare with battery energy storage systems (BESS), how to assess them from a deployment perspective and what innovations are ...



[A review of flywheel energy storage systems: state of the art and](#)

Thanks to the unique advantages such as long life cycles, high power density, minimal environmental impact, and high power quality such as fast response and voltage stability, the ...



[Hybrid Gravity Flywheel Storage: The Future of Energy](#)

As the world seeks energy storage that is durable, safe, sustainable, and cost-effective, hybrid gravity-flywheel systems offer an elegant solution grounded in timeless physics -- weight and ...



[Flywheel Energy Storage Systems and their Applications: A Review](#)

Flywheel energy storage systems have gained increased popularity as a method of environmentally friendly energy storage. Flywheels store energy in mechanical rotational energy to be then ...



[Flywheel Energy Storage 1000 kWh: The Future of Green Energy Is](#)

Ever wondered how we could store enough renewable energy to power a small neighborhood during peak demand? Enter the 1000 kWh flywheel energy storage system - the silent ...



Grid-Scale Flywheel Kinetic Energy Storage Systems

Equipment installation up to low voltage connection point. switchgear, substation. Includes excavation for flywheel.



Flywheel Energy Storage Systems



and Their ...

PDF , This study gives a critical review of flywheel energy storage systems and their feasibility in various applications.



Flywheel energy storage

First-generation flywheel energy-storage systems use a large steel flywheel rotating on mechanical bearings. Newer systems use carbon-fiber composite rotors that have a higher tensile strength than ...



Flywheel storage power system

Stadtwerke München (SWM, Munich, Germany) uses a flywheel storage power system to stabilize the power grid, as well as control energy and to compensate for deviations from renewable energy sources.





Contact Us

For catalog requests, pricing, or partnerships, please visit:

<https://www.firmaskrzypek.pl>

Phone: +48 22 426 71 90

Email: info@firmaskrzypek.pl

Scan the QR code to access our WhatsApp.

