



10kW Communication Power Supply Cabinet for a Korean Chemical Plant





10kW Communication Power Supply Cabinet for a Korean Chemical Pl



New ZTE 10KW Power Supply Indoor Communication Power Cabinet

ZTE's indoor base station power system ZXDU58 S151 is a -48V intelligent unattended communication power supply with 30A switching rectifier. The rack height is 2.0 meters.

[Hot Item] 10kv Distribution Cabinet for Power Plants

Using sensors and communication modules, these systems enable real-time data collection, remote monitoring, fault alarms, and operational management, enhancing power supply reliability and ...



↑ ESS



Alpha® Enclosure Node Power Supply Cabinet , EnerSys

The Alpha® NPS Enclosure node power supply cabinet is specifically designed for indoor or outdoor installations requiring lower power, a smaller footprint, and embedded DOCSIS® or proprietary ...

Industrial Intercom System

Industrial-grade explosion-proof security communication integrated system developed by various advanced technologies such as control technology.



Telecom Power System

In short, ZTT is committed to providing high-quality and customized power solutions for the global communication industry with its comprehensive advantages in communication power system design, ...



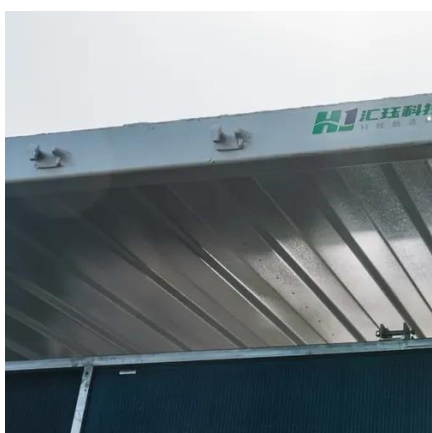
Outside Plant

A solid system enclosure is an essential part of the plan for any outside plant installation. With one of Alpha's agency certified enclosures, your power systems are protected from changes in the climate ...



Base Station Energy Cabinet

The Base Station Energy Cabinet is a fully enclosed, weather-resistant telecom energy cabinet designed to provide reliable power distribution and battery backup for outdoor communication networks.



Outside Plant Enclosures (OSP) ,



Moore

This heavy-duty enclosure securely houses a Stand By Power Supply and three (3) batteries along with equipment and cable required for fiber optic conversion and/or distribution.



Power system cabinet

We offer full customization of cabinet dimensions, internal layouts, cutout positions, structural reinforcements, and surface coatings to perfectly match your site needs.

GZDW DC Power Supply Panel

This product complies with the JB/T5777.4-2000 "General Technical Conditions and Safety Requirements for DC Power Supply Equipment in Power Systems" standard.





Contact Us

For catalog requests, pricing, or partnerships, please visit:

<https://www.firmaskrzypek.pl>

Phone: +48 22 426 71 90

Email: info@firmaskrzypek.pl

Scan the QR code to access our WhatsApp.

