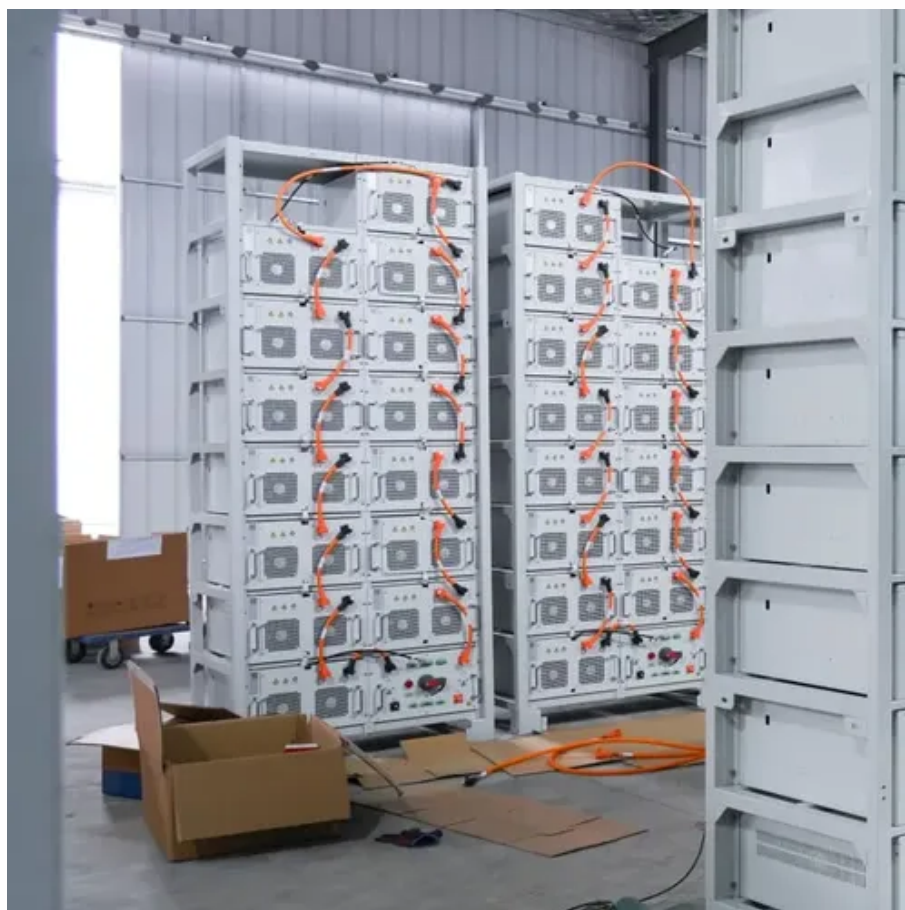




# 12 volt 250 ah battery





## 12 volt 250 ah battery

---



### [12-Volt 250 Ah L4 Terminal Sealed Lead Acid \(SLA\) ...](#)

The UPG SLA 12-Volt 250 Ah Capacity L4 Terminal Battery withstands high ...

### [Mighty Max\(TM\) 12V 250Ah Sealed Lead Acid \(SLA\) AGM Rechargeable Battery](#)

Delivering power when you need it, the Mighty Max(TM) ML8D 12 Volt 250 AH uses a state of the art, heavy-duty, calcium-alloy grid that provides exceptional performance and service life in both float ...



### [Amazon : ML8D -12 Volt 250 AH, Internal Thread \(INT\) Terminal](#)

Factory activated SLA / AGM battery. Maintenance free. No adding water. Advanced design works right out of the box and requires zero maintenance, zero adding of fluids compared to a ...

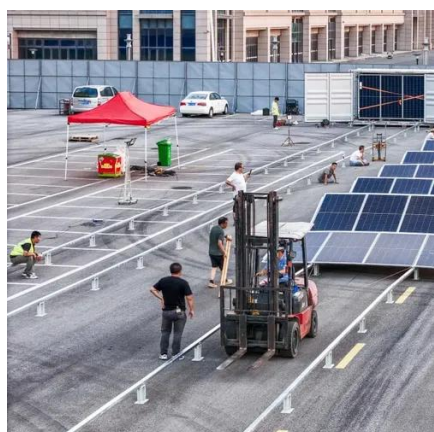
### [12-Volt 250Ah Sealed Lead Acid Battery for ATV / RV / Marine](#)

Delivering power when you need it, the Mighty Max ML8D 12-Volt 250 AH uses a state of the art, heavy-duty, calcium-alloy grid that provides exceptional performance and service life in both float and cyclic ...



### [ML8D -12 Volt 250 AH, Internal Thread \(INT\) Terminal ...](#)

Delivering power when you need it, the Mighty Max ML8D 12 Volt 250 AH uses a ...



### [12-Volt 250 Ah L4 Terminal Sealed Lead Acid \(SLA\) AGM Rechargeable Battery](#)

The UPG SLA 12-Volt 250 Ah Capacity L4 Terminal Battery withstands high current output and deep cycling for sustained performance. This is vibration, shock and heat resistant.



### [NPP NPD12-250Ah \(2 Pcs\) 12V 250Ah AGM Deep Cycle Sealed ...](#)

The NPD12-250Ah Sealed Lead Acid AGM Deep Cycle Battery is made with heavy duty lead calcium grids with 10+ years of floating design life. The NPD series is ideal for standby power ...



### [NPP NPG12-250Ah Gel AGM Deep Cycle](#)



## Marine Battery, 12V 250Ah ...

The NPG12-250Ah Sealed Lead Acid AGM Gel Battery is made with heavy duty lead calcium grids with 10+ years of floating design life. The NPG series is ideal for standby power ...

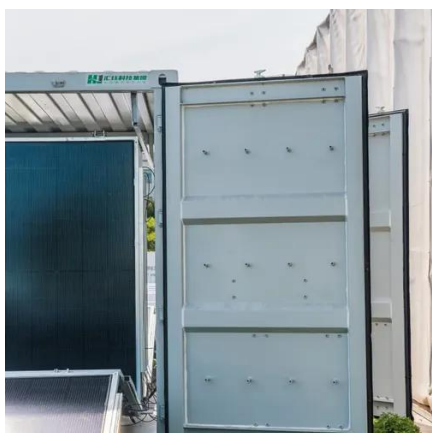


## **ML8D -12 Volt 250 AH, Internal Thread (INT) Terminal**

Delivering power when you need it, the Mighty Max ML8D 12 Volt 250 AH uses a state of the art, heavy-duty, calcium-alloy grid that provides exceptional performance and service life in both float and cyclic ...

## **LEOCH 12V 250 AH DUAL TERMINAL SEALED AGM BATTERY**

This is a Leoch dual terminal 12 Volt 250ah AGM battery. LDC12-250-8D. LEOCH® LDC Series is revolutionizing the industry and taking performance to new heights. Our proprietary paste formula ...



## [12 V Rechargeable Batteries 250 Ah Amp Hours for sale , eBay](#)

Get the best deals on 12 V Rechargeable Batteries 250 Ah Amp Hours when you shop the largest online selection at eBay . Free shipping on many items , Browse your favorite brands , affordable prices.



## Contact Us

---

For catalog requests, pricing, or partnerships, please visit:

<https://www.firmaskrzypek.pl>

Phone: +48 22 426 71 90

Email: [info@firmaskrzypek.pl](mailto:info@firmaskrzypek.pl)

Scan the QR code to access our WhatsApp.

