



# 20kW Data Center Rack for Island Use





## 20kW Data Center Rack for Island Use

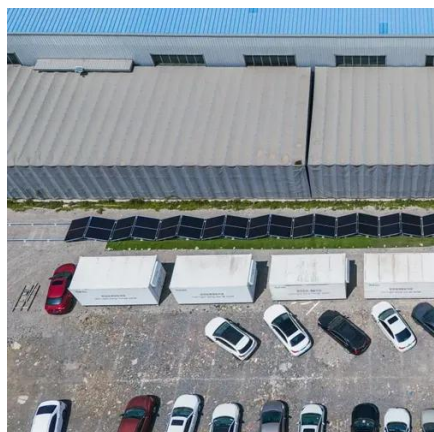


### Data Center Racks

The Amphenol Network Solutions Data Center Rack is the ultimate rack solution for core data center equipment. Amphenol data center racks provide a seismic certified, highly durable and versatile ...

### [Vertiv SmartRow 2 SR2N04020PAA1 20kW 4-Rack 208V Modular ...](#)

Featuring 4 IT racks, in-row cooling, and sealed cold aisle containment, this turnkey system ensures efficient thermal management and power distribution in a compact footprint.



### [Vertiv \(TM\) SmartRow\(TM\) 2 , 5 Racks , 20 kW 208V , Single-Phase , 1 in ...](#)

Rather than designing and planning a new edge deployment, the Vertiv SmartRow 2 is an all-in-one solution designed for Edge computing by global leaders in data center infrastructure. This solution ...

### [Best Practices for Data Center Area Sizing Per Rack Based on Power](#)

This blog outlines best practices for data center area planning per rack, segmented by power density levels (5-12 kW, 12-20 kW, and >20 kW), and based on the industry-standard space allocation model:



50KW modular power converter



**Flexible Configuration**  
• Modular Design, Expanding as Required  
• Small/light, Well Protected  
• Available in Racked for Expansion



**Powerful Function**  
• Support PV/ESS  
• Grid Support, Equipped with SVG Technology  
• On-Grid and Off-Grid Operation



**Reliable Protection**  
• Outdoor IP65 Design  
• Sufficient Protection Functions Equipped

## kW per Rack Explained: Optimize Your Data Center

Learn how kW per rack impacts colocation pricing, energy efficiency, and performance. Discover best practices to manage power, reduce costs, and future-proof your IT infrastructure.

## DATA CENTER RACK SYSTEMS

Rack systems are strategic assets that play a key role in system uptime and data center availability and reliability. They can be counted on to be flexible and adaptive to accommodate rapid change. They ...



## RS - Industrial Solutions & Electronic Components

Gain the total edge Total Panel Integration by RS PRO -- build panels that last and pay off fast. Consider these popular solutions in industrial sensing, control, connectivity, and more, including cost ...

## 20kW Enterprise Data Center



PRIME's Modular Data Centers are a prefabricated and efficient solution for 5G Macro Sites and Enterprise applications. The Natural Air Cooling system cuts energy costs dramatically - using 75% ...



### [Vertiv SmartRow 2 20kW 3-Phase 3-Rack Contained ...](#)

Vertiv SmartRow(TM) 2 SR2N03020PAA1 is a 3-rack, 20kW 208V 3-phase edge data center solution with cold aisle containment and integrated 2N power.



### [How Meta achieves 120kW a rack in 20kW air-cooled data centers](#)

Microsoft, Meta, and Google are working with OCP partners to design a new power rack side pod that the companies say will enable IT racks to reach densities of up to 1MW per rack.





## Contact Us

---

For catalog requests, pricing, or partnerships, please visit:

<https://www.firmaskrzypek.pl>

Phone: +48 22 426 71 90

Email: [info@firmaskrzypek.pl](mailto:info@firmaskrzypek.pl)

Scan the QR code to access our WhatsApp.

