



25kW commercial inverter





25kW commercial inverter



[Yaskawa-Solectria PVI 25kW 208VAC TL Commercial Inverter PVI ...](#)

Yaskawa Solectria Solar's PVI 25TL is a compact grid-tied, transformerless three-phase string inverter ideal for rooftop, ground mount and carport PV arrays.

Solis Inverter

This Ginlong Solis Inverter is a 25kW 3-phase 480VAC string inverter intended for commercial installations in North America. It has a very wide operating window on each of its (4) MPPT input ...



[CPS > 25kW 208 VAC 3-Phase Grid-Tie Inverter for Commercial](#)

High efficiency 97.0% peak and 96.5% CEC, wide operating voltages, broad temperature ranges and a NEMA Type 4X enclosure enable this inverter to operate at high performance across many applications.

Commercial 25kW

The 25kW-480V CPS three phase string inverters are designed for rooftop and carport PV applications. These compact units are high performance, advanced and reliable inverters designed specifically for ...

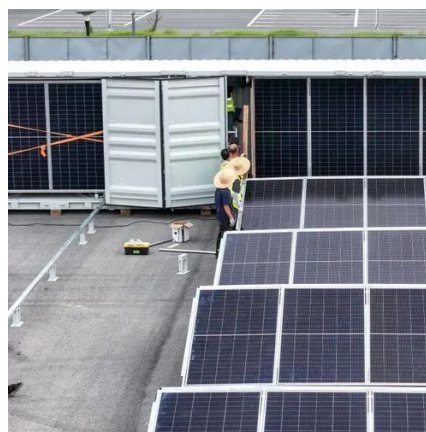


[Chint CPS SCA25KTL 25kW Commercial Inverter , 480V 3-Phase](#)

The Chint Power Systems CPS SCA25KTL-DO-R/US-480 delivers 25kW of three-phase power output with 98.5% peak efficiency and 98.0% CEC efficiency, specifically engineered for North American ...

[CPS 25kW 480 VAC 3-Phase Grid-Tie Inverter for Commercial ...](#)

The 25 kW (480 V) CPS three phase string inverter is designed for rooftop and carport applications. These units are high performance, advanced and reliable inverters designed specifically for the North ...



Commercial

Our three-phase, utility-scalable 25kW commercial inverters are the workhorses of Tabuchi America. Featuring 6 MPPTs (maximum power point trackers) for flexible design and higher solar production.



Three Phase Commercial Inverters



Maximize energy production, safety and reliability with our range of easy-to-install inverters for small-medium size commercial projects. Ideal for a broad range of small to medium commercial projects, ...



[25kW Three-Phase Hybrid Solar Inverter: Commercial-Grade Energy ...](#)

Huijue Group's 25kW three-phase hybrid solar inverter for large homes & commercial solar systems. Features EMS, UPS backup, high efficiency, and wide voltage ranges for optimal energy independence.

PVI 25TL

25kW, 1000VDC, 208VAC Transformerless String Inverter. Yaskawa Solectria Solar's PVI 25TL is a compact grid-tied, transformerless three-phase string inverter ideal for rooftop, ground mount and ...



[CPS > 25kW 208 VAC 3-Phase Grid-Tie Inverter for ...](#)

High efficiency 97.0% peak and 96.5% CEC, wide operating voltages, broad ...



Contact Us

For catalog requests, pricing, or partnerships, please visit:

<https://www.firmaskrzypek.pl>

Phone: +48 22 426 71 90

Email: info@firmaskrzypek.pl

Scan the QR code to access our WhatsApp.

