



515w photovoltaic panel specifications





Overview

Measurements according to IEC 60904-3, Measurement tolerance: I_{sc} : $\pm 4\%$, V_{oc} : $\pm 3\%$, Test uncertainty for P_{max} : $\pm 3\%$, Bifaciality: $80\% \pm 5\%$ STC (Standard Test Condition): Radiation 1000 W/m^2 , Module temperature 25°C , $AM = 1.5$, Wind. 40+ years experience in high-tech manufacturing. 100% green production, transparent supply chain and excellent ESG rating in the solar industry. Homeowners can also pair these panels with energy storage solutions, such as home batteries, to store excess energy for use during peak hours or in case of power outages. Fuse Rated Current Fire Safety Class Static Load Packing Data Max. Please consult Waaree technical team for further clarifications. *Standard Test Conditions (STC) - 1000 W/m^2 irradiance, Air Mass 1. 28 solar panel is a powerful 515W module from the Vertex S+ series, designed for high efficiency and reliability in residential and commercial solar energy systems.



515w photovoltaic panel specifications



515~525W

515W~525W Monocrystalline silicon Light weight flexible solar panel Key Features Lightweight Optimized composite materials, 60% lighter at the same power

DAS-DH120ND-EN-500-515(Black Pro)

Connector*:1.PV-DA01M2-XY 4.PV-KST4-EVO2A/xy,PV-KBT4-EVO2A/xy 2.PV-ZH202B 3.PV-KST4-EVO2/xy_UR,PV-KBT4-EVO2/xy_UR 5.PV-JK03M2/xy (Plug+Socket);PV-JK03M2/xy (Plug+Socket)



Topsun 515W Solar Panel Specifications

Learn about the Topsun 515W solar panel. Explore solar panel efficiency, warranties and more.

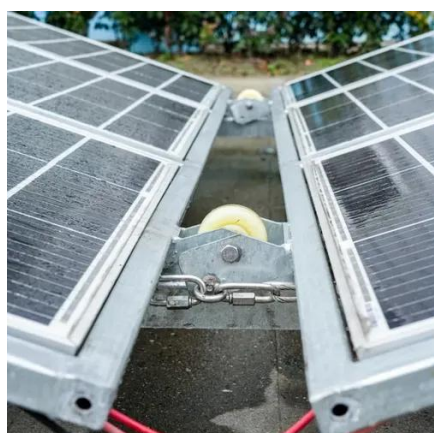
Jinko 515W Solar Panel (JKM515M-7TL4-V) - TSolar

Built with advanced Tiling Ribbon (TR) technology and half-cell design, this panel achieves a maximum module efficiency of up to 21.16% and delivers reliable power output with minimal degradation over ...



Trina Vertex S+ N-Type Dual Glass 515W Black Frame

The Trina Solar TSM-515-NEG18R.28 solar panel is a powerful 515W module from the Vertex S+ series, designed for high efficiency and reliability in residential and commercial solar energy systems.



Datasheet

Waaree Energies Ltd. is amongst the top Solar Energy Companies and has the country's largest Solar PV Module manufacturing capacity of 5 GW. In addition, it is committed to provide top notch EPC ...



Perlight Solar Panel Review , FMB

Our solar experts break down the Perlight 515W Double Glass PLK Transparent solar panels' key specs, cost and pros and cons. With a high power output and efficiency rating, the ...

DMEGC 515W All Black Solar Panel



Data Sheet

Statement: The installation instructions and the warranty conditions must be followed. Due to technological progress, product parameters will be adjusted accordingly. When signing the contract,

...



[Perlight 515W Double Glass BLK Transparent solar panel review - ...](#)

Our solar experts break down the Perlight 515W Double Glass PLK Transparent solar panels' key specs, cost and pros and cons. With a high power output and efficiency rating, the ...

515W Double Glass BLK Transparent

Home / Products / STANDARD PANEL / COMMERCIAL 182 SERIES / 515W Double Glass BLK Transparent





Contact Us

For catalog requests, pricing, or partnerships, please visit:

<https://www.firmaskrzypek.pl>

Phone: +48 22 426 71 90

Email: info@firmaskrzypek.pl

Scan the QR code to access our WhatsApp.

