



# 530 solar panel specifications





## Overview

---

The 530W solar panels have a rated output of 530 Wp and an impressive efficiency of 20. 530W panels deliver optimal power density: With efficiency ratings of 20-22%, these panels generate nearly double the power of traditional 300W modules while fitting standard residential roof layouts, making them ideal for space-constrained installations in 2025. Advanced half-cell technology. Ø 25 mm at 23 m/s 2400 Pa or 244 kg/m<sup>2</sup> 5400 Pa or 550 kg/m<sup>2</sup> Operating temperature Temp. Power The specifications and characteristics contained in this datasheet may deviate. Discover the specifications and capabilities of a remarkable solution that transcends conventional boundaries, offering unparalleled efficacy and reliability. The Passivated Emitter Rear Contact (PERC) technology ensures excellent power output. Manufactured in the USA, this 520W module offers strong performance for businesses seeking to optimize their solar energy systems.



## 530 solar panel specifications

---



### [530 Watt Solar Panels: Complete 2025 Buyer's Guide & Top Model ...](#)

Comprehensive guide to 530W solar panels. Compare top models from JA Solar, Jinko, Canadian Solar & more. Includes performance data, pricing, and installation tips.

### Jinko 530w Datasheet

In this section, we will delve into the comprehensive technical specifications of Jinko's state-of-the-art solar panels that offer exceptional power output for efficient energy production.



### Silfab 530W SIL-530-XM N Type Bifacial Solar Panel

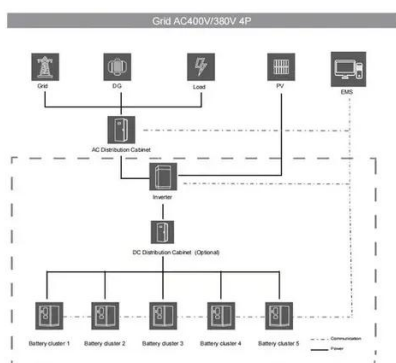
The Silfab SIL-530-XM panel delivers 530 watts of power, offering high efficiency and enhanced energy yield with bifacial technology, making it ideal for commercial and utility-scale solar projects.



### [Silfab Solar 530W 132 Half-Cell N-Type Silver Bifacial Solar Panel, ...](#)

Greentech Renewables supplies Silfab Solar 530W 132 Half-Cell N-Type Silver Bifacial Solar Panel, SIL 530 XM and other pre-qualified solar equipment from Silfab Solar through our extensive network of

...



## Topsun 530W Solar Panel Specifications

Learn about the Topsun 530W solar panel. Explore solar panel efficiency, warranties and more.

## Solar Panel 530 Watt Bi-Facial Mono Perc

Technology decreases the distance between bus bars and finger grid line which is benefit to power increase.



## [Silfab 530W Solar Panel 132 Cell SIL-530-XM Bifacial Assembled in ...](#)

Each of the panel's 132 cells is only half the size of a traditional solar cell. This grants SIL-530-XM lower resistive losses and better shade tolerance. The efficiency of this model reaches 22.3% -- well ...



## Silfab SIL-530 XM Bifacial , 530W



## Commercial Panel

Discover the Silfab SIL-530 XM Bifacial Solar Panel. 530W panel with N-type cell technology for commercial projects. US-made, 25-year warranty, 22.3% efficiency.

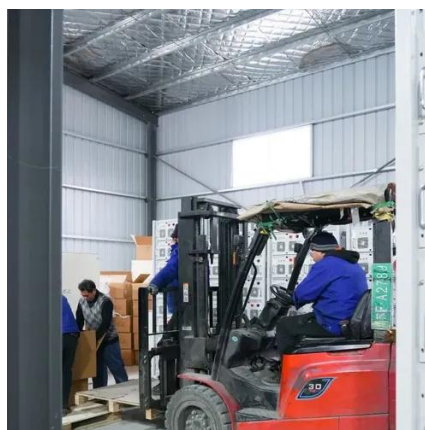


## AE\_MD-144\_530W-550W\_Ver24.1.1

The specifications and characteristics contained in this datasheet may deviate slightly from our actual products due to the product developments and uncertainty of measurement devices. The ...

## VEGA SERIES

**BUILT TO LAST** Our PV modules are designed with better technology in mind, made from robust product components, under stringent quality control steps and high-tech manufactu.





## Contact Us

---

For catalog requests, pricing, or partnerships, please visit:

<https://www.firmaskrzypek.pl>

Phone: +48 22 426 71 90

Email: [info@firmaskrzypek.pl](mailto:info@firmaskrzypek.pl)

Scan the QR code to access our WhatsApp.

