



620 PV panel assembly size





Overview

Based on current photovoltaic market analysis, 600W+ class panels generally measure between 2. The actual Haitai 620 size would likely fall within this range while maintaining a profile thickness under 40mm. Summary: This guide explores the technical specifications, dimensions, and industrial applications of 620W PV panels. Discover how these high-efficiency modules optimize energy production for commercial and utility-scale projects - with verified performance data and installatio Summary: This guide. The SP635M-78H module combines the S-TOPCo 2. 72%) ranging from 605W to 635W, and maximize the energy yield. The bifacial design of the SP635M-78H module enables the absorption of light from both the front and. The panel is made with 182mm wafers, half-cut cells, and has a power output ranging from 590 to 620 W. It measures 2465#215;1134#215;30mm and has a weight of 34. Failure to. Excellent anti-LeTID & anti-PID performance. Low power degradation, high energy yield * For detailed information, please refer to the Installation Manual. Its ower conversion efficiency r -sized module power output bottleneck of 600W but., Ltd Solar Panel Series WP620-635/A12-120H.



620 PV panel assembly size



[620W Solar Panel Specifications and Dimensions: A Comprehensive ...](#)

Summary: This guide explores the technical specifications, dimensions, and industrial applications of 620W PV panels. Discover how these high-efficiency modules optimize energy production for ...

Wattpower , WP620-635/A12-120H , Solar Panel ...

Detailed profile including pictures, certification details and manufacturer PDF.



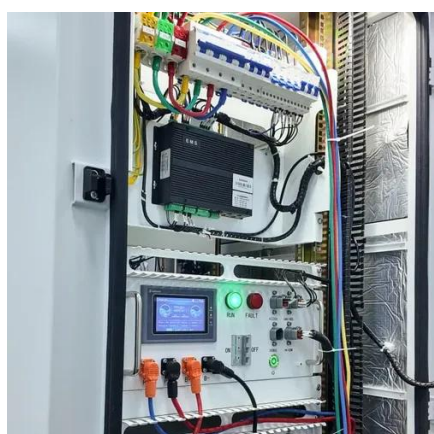
[Haitai 620 Photovoltaic Panel Dimensions Demystified](#)

Based on current photovoltaic market analysis, 600W+ class panels generally measure between 2.1-2.3 meters in length and 1.1-1.3 meters in width. The actual Haitai 620 size would likely fall within this ...



CS-Datasheet-TOPBiHiKu6 (TOPCon)_CS6.1-72TB_Bifacial

Please be kindly advised that PV modules should be handled and installed by qualified people who have professional skills and please carefully read the safety and installation instructions before using our ...



[620w photovoltaic panel specifications and dimensions](#)

The most important solar panel specifications include the short-circuit current, the open-circuit voltage, the output voltage, current, and rated power at 1,000 W/m² solar radiation, all

620 Photovoltaic panel size specifications

The panel is made with 182mm wafers, half-cut cells, and has a power output ranging from 590 to 620 W. It measures 2465x1134x30mm and has a weight of 34.8 kg.



[620w Solar Panel , Jinko Tiger Neo 620w Authorized Distributor](#)

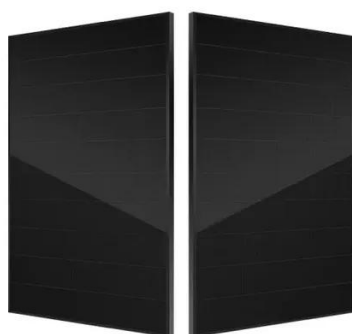
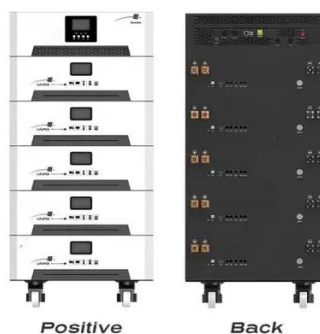
The Jinko 620W solar panel is a prime example of extraordinary quality and better performance in poor weather conditions. With a dimensions of 2382x1134x30 mm and an efficiency rate of up to 22.95%.

[N Type 620W 630W 635W All Black](#)



Double Glass Solar Panel

The SP635M-78H module combines the S-TOPCo 2.0 technology with 182mm half-cut cells to ensure impressive efficiency levels (up to 22.72%) ranging from 605W to 635W, and maximize the energy yield.



N Type 620W 630W 635W All Black Double Glass ...

The SP635M-78H module combines the S-TOPCo 2.0 technology ...

TONGWEI Tier 1 N-Type Half Cell 620W Monofacial Solar Panel

Measuring 2382 x 1134 x 35mm, this high-performance solar module is perfect for both residential and commercial applications. Equipped with advanced N-Type half-cell technology, it ensures superior ...

FLEXIBLE SETTING OF MULTIPLE WORKING MODES



Jinko Solar 620W Datasheet

In this section, we will provide a comprehensive overview of the installation process for Jinko's cutting-edge 620-watt solar panel. As renewable energy becomes increasingly popular, it is crucial to ...



Contact Us

For catalog requests, pricing, or partnerships, please visit:

<https://www.firmaskrzypek.pl>

Phone: +48 22 426 71 90

Email: info@firmaskrzypek.pl

Scan the QR code to access our WhatsApp.

