



75kWEPC Communication Cabinet for Communication Equipment Room





75kWEPC Communication Cabinet for Communication Equipment Room

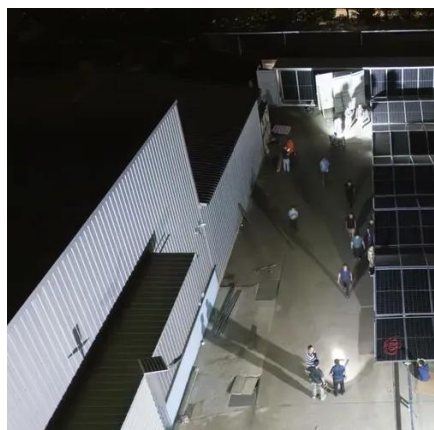
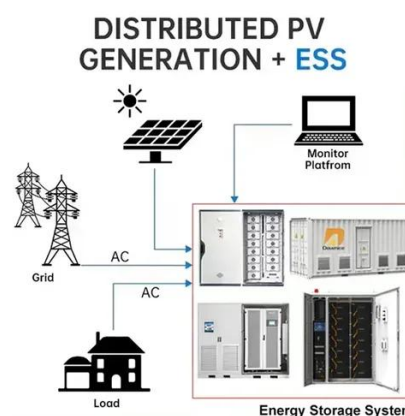


Cabinets , Telecor , Transforming Communication

Secure your eSeries equipment with Telecor's heavy-duty wall cabinets featuring 9RU and 12RU sizes, key-locked glass doors, adjustable mounting rails, and excellent cable management.

COMMUNICATION POWER CABINET , ICEENG CABINET

What are 600mm wall mounted data cabinets? Our range of 600mm wall mounted data cabinets have been designed with ease of installation and maintenance in mind. The high specification of the ...



Communication Cabinets , Main Electric Supply

Main Electric's selection of communication cabinets bring wireless ceiling enclosures, data brackets, and more to provide integration and accommodation for a variety of equipment.

[SPECIFICATION 271100 COMMUNICATIONS CABINETS AND ...](#)

This section includes the specifications for constructing and building out of Telecommunications Equipment Rooms (MDF/IDFs) to be used for supporting telecommunications ...



Panduit , Network Infrastructure and Industrial Electrical Wiring

This document describes the products and execution requirements relating to furnishing and installing Communications Equipment Room Fittings of cabinets, racks, frames and enclosures.

SECTION 271100

Include construction details, material descriptions, dimensions of individual components and profiles, and finishes for equipment racks and cabinets. Include rated capacities, operating characteristics,

...



Section 271100

The telecommunication spaces include the Entrance Telecommunication Room (ETR) and the Telecommunication Room (TR). The telecommunications space is an enclosed architectural space ...

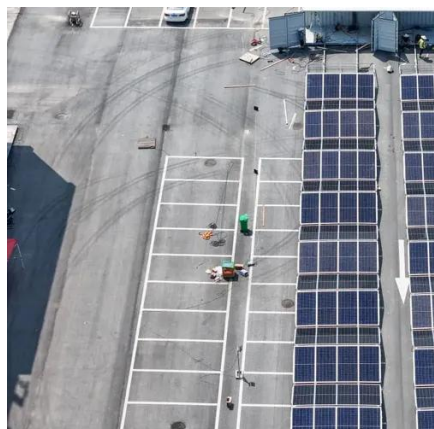


COMMUNICATION EQUIPMENT ROOM



FITTINGS PART 1 - ...

The open, four-post rack will provide front and rear support for equipment. The vertical equipment mounting channels will be spaced to allow attachment of 19" EIA rack-mount equipment and will be ...



75KW+COMMUNICATION+POWER+SUPLY+CABINET+PROJECT+EPC ...

75KW+COMMUNICATION+POWER+SUPPLY+CABINET+PROJECT+EPC, request quote, price and delivery information, for this item, Sierra Ic Inc

SECTION 271100

Thinline II Wall-Mount Cabinet is designed for use in computer and equipment room applications primarily as a storage solution for network cabling and switch equipment.





Contact Us

For catalog requests, pricing, or partnerships, please visit:

<https://www.firmaskrzypek.pl>

Phone: +48 22 426 71 90

Email: info@firmaskrzypek.pl

Scan the QR code to access our WhatsApp.

