



# A set of solar panels occupies an area





## Overview

---

A typical home solar panel is about 3 feet wide by 5.5 feet long, occupying an area of roughly 17. To help you decide if your property is suitable for solar, this guide outlines roof space requirements and breaks down how to calculate the area needed for your home. Installing solar panels is a significant investment, and accurately calculating the surface area required for installation is crucial for optimizing energy production and maximizing savings. This guide will walk you through the factors influencing solar panel sizing, including energy consumption. Tip: Gross area = Net module area × Layout factor (accounts for row spacing, walkways, setbacks). Typical. Based on the inquiry related to solar panel setups, the area required for a solar panel system can be determined by various factors, including general efficiency, the specific energy needs of a household or facility, and the type of solar panels utilized. This metric is crucial for estimating the potential area available for solar energy generation, which directly impacts the efficiency and cost savings of.



## A set of solar panels occupies an area

---



### [A set of solar photovoltaic panels occupies an area](#)

Calculator for the power per area or area per power of a photovoltaic system and of solar modules. You can enter the size of the modules and click from top to bottom, or omit some steps and start e.g. with ...

### [A Guide on Calculating Area Required for Solar Panel Installation](#)

Once you have estimated the number and size of solar panels you need, you have to determine the area required on your rooftop, backyard, or garden to install solar systems and enjoy ...



### [Total Area Required for Solar Panel Installation Calculator](#)

Calculate the total area needed for your solar panel installation quickly and accurately with our easy-to-use solar panel area calculator.

### [How much area does a solar panel set have? , NenPower](#)

For effective energy generation, an average home might require a solar setup that includes a minimum of 15 to 20 solar panels, translating to approximately 24.75 to 33 square meters ...



### [? Master Of Solar Panel Area Calculator: ?79% of Guess!](#)

What Is a Solar Panel Area Calculator? A solar panel area calculator helps you find the exact space needed for your solar power system. This free tool takes your energy needs and shows you the ...

## **PVWatts Calculator**

NREL's PVWatts ® Calculator Estimates the energy production of grid-connected photovoltaic (PV) energy systems throughout the world. It allows homeowners, small building owners, installers and ...



### [How to calculate the surface area required by solar panels](#)

By the end of this guide, you'll be able to estimate the necessary surface area for your solar panels and make informed decisions about your solar energy system.

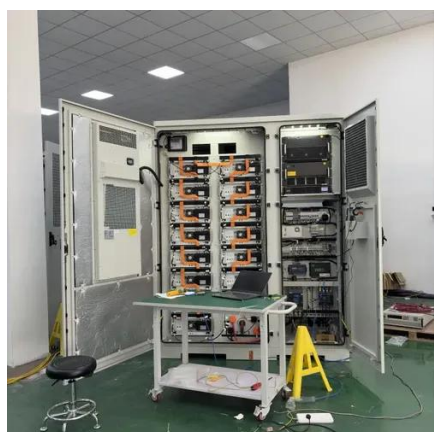


### [Solar Coverage Calculator: Determine](#)



## [Your Solar Panel Area](#)

This metric is crucial for estimating the potential area available for solar energy generation, which directly impacts the efficiency and cost savings of renewable energy systems.



## [Solar Power Roof Area Calculator , Roof Space Needed for a Solar ...](#)

This calculator is essential for homeowners, architects, and solar installers who need to plan and optimize the installation of solar panels. By inputting certain variables, users can obtain a ...

## [How much area is needed for solar panel installation](#)

A typical home solar panel is about 3 feet wide by 5.5 feet long, occupying an area of roughly 17.5 square feet (sq ft). On average, the amount of required roof space for a set of home ...





## Contact Us

---

For catalog requests, pricing, or partnerships, please visit:

<https://www.firmaskrzypek.pl>

Phone: +48 22 426 71 90

Email: [info@firmaskrzypek.pl](mailto:info@firmaskrzypek.pl)

Scan the QR code to access our WhatsApp.

