



# Appearance characteristics of base station communication equipment





## Overview

---

Base stations form the backbone of 4G LTE and 5G networks. They transmit radio signals within a set area. You stay connected as you move between zones. A base station represents an access point for a wireless device to communicate within its coverage area. Base stations typically have a transceiver, capable of sending and receiving signals. This article explores the differences between Remote Radio Head (RRH) based base stations and traditional base station architectures, commonly used in cellular communication systems. The cabinet houses critical components like main base station equipment, transmission equipment, power supply systems, and battery banks.



## Appearance characteristics of base station communication equipment

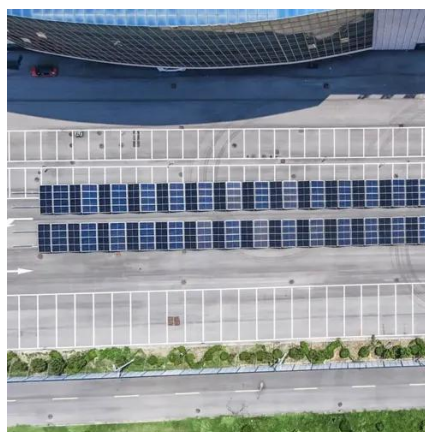


### Base transceiver station

A BTS is usually composed of: Transceiver (TRX) Provides transmission and reception of signals. It also does sending and reception of signals to and from higher network entities (like the base station controller in mobile telephony). This can be separated into a dedicated device known as a Remote radio head (RRH). Power amplifier (PA) Amplifies the signal from TRX for transmission through antenna; may be integrated with TRX. Combin...

### Base Stations

The present-day tele-space is incomplete without the base stations as these constitute an important part of the modern-day scheme of wireless communications. They are referred to as cell ...



### RRH vs. Traditional Base Stations: A Comparison

Explore the key differences between RRH-based and traditional base station architectures in cellular communication, highlighting advantages and applications.

### What are Base Station in Telecommunications?

Base stations contain several key parts. The antenna sends and receives radio energy. The



transceiver handles signal modulation. The baseband processor converts signals to digital form. ...



### [Complete Guide to 5G Base Station Construction , Key Steps, Equipment](#)

Key for connecting base stations into a network, this system ensures smooth communication. It becomes a top priority during power outages to maintain data flow. Outdoor base ...



### [What is a Base Station? -- From Communication Core to Thermal ...](#)

This article explains the definition, structure, types, and principles of base stations, while highlighting the critical role of thermal interface materials in base station heat management for ...



### [Types and Applications of Mobile Communication Base Stations](#)

Mobile communication base station is a form of radio station, which refers to a radio transceiver station that transmits information between mobile phone terminals through a mobile ...

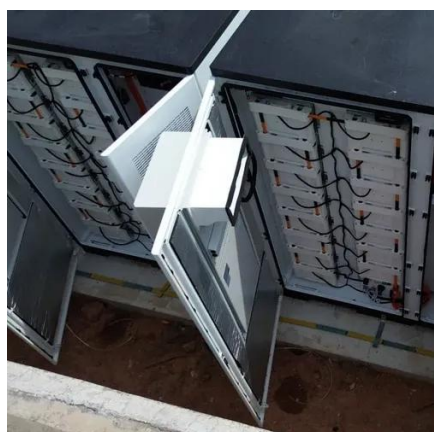


### [Understanding Base Stations in Mobile](#)



## Communication

In this article, we explore several key elements of base stations, such as their definitions, historical background, and present-day functionality. By delving into the operational mechanics, readers can ...



### **What Is A Base Station?**

Base stations play a central role in two-way radio systems, such as citizens band (CB) radio and ham radio. In these setups, the base station serves as a fixed point of communication, ...

### **Base stations**

Base stations are required to enable mobile phone communication, including calls and data transfer. They consist of different electronic components and antennas and can be located on masts, on ...





## Contact Us

---

For catalog requests, pricing, or partnerships, please visit:

<https://www.firmaskrzypek.pl>

Phone: +48 22 426 71 90

Email: [info@firmaskrzypek.pl](mailto:info@firmaskrzypek.pl)

Scan the QR code to access our WhatsApp.

