



# Are the photovoltaic panels connected in positive and negative directions



48V 100Ah





## Overview

---

Solar panels have two terminals: positive (+) and negative (-). The positive terminal is typically marked with a “+” symbol, while the negative terminal is marked with a “-” symbol. When setting up a solar panel system, the correct connection of these terminals is vital for the. To effectively connect the positive and negative terminals of solar panels, it is essential to follow a systematic approach that ensures optimal performance and safety. Understanding the polarity is crucial, 2. Incorrect wiring can lead to wasted energy and additional costs, undermining the benefits of solar power. This wiring type increases the output voltage, which can be measured at the available terminals. On the DC side of a PV array, ground faults typically occur on.



## Are the photovoltaic panels connected in positive and negative direct

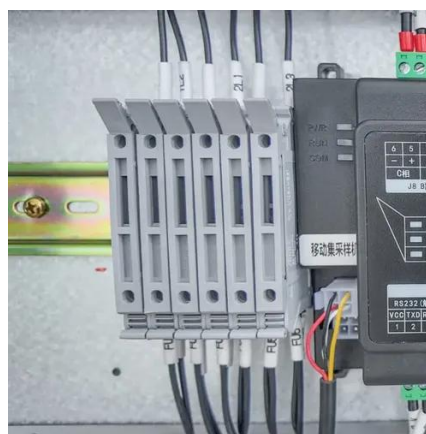


### Solar Panel Positive and Negative (Diode + Voltmeter)

In this article, you will learn how to determine the positive and negative terminals of a solar panel. We will also show you how to check solar panel polarity, and how to connect a solar panel to a battery.

### [Solar Panel Wiring Basics: Complete Guide & Tips to Wire a PV System](#)

Solar panels feature positive and negative terminals. Wiring solar panels in series means wiring the positive terminal of a module to the negative of the following, and so on for the whole string.



### [How to connect the positive and negative of solar panels](#)

The positive terminals of the solar panels connect together, while the negative terminals do the same. This arrangement is often useful when the load requires more current than one panel can ...



### [Solar Panel Wiring Basics: Complete Guide & Tips to Wire a PV System](#)

Key Concepts and Items Required For Solar Panel Wiring  
Are You Using Microinverters Or String Inverters For Your array?  
Planning The Best Solar Array Configuration For Your PV System  
Wiring Your Solar Panel Array: Step-By-Step Guide  
Solar



Panel Wiring: Tips from A Professional There are two types of inverters used in PV systems: microinverters and string inverters. Both feature MC4 connectors to improve compatibility. In this section, we will explain each of them and their details. See more on solarmagazine Renogy

## Solar Panel Wiring Basics: How to Wire Solar Panels

While wiring solar panels in parallel, the positive terminals of different solar panels are linked together. The same is the case with the negative terminals of these ...



### Identifying Positive and Negative Terminals on a Solar Panel

In this article, we'll explore how to identify the positive and negative terminals of a solar panel, check solar panel polarity, and effectively connect a solar panel to a battery.



✓ LIQUID/AIR COOLING

✓ ON GRID/HYBRID

✓ PROTECTION IP54/IP55

✓ BATTERY /6000 CYCLES

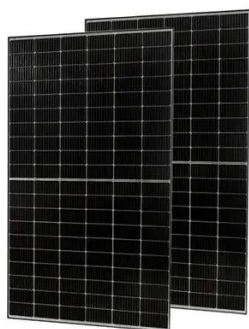
## Solar Panel Wiring Basics: How to Wire Solar Panels

While wiring solar panels in parallel, the positive terminals of different solar panels are linked together. The same is the case with the negative terminals of these panels.



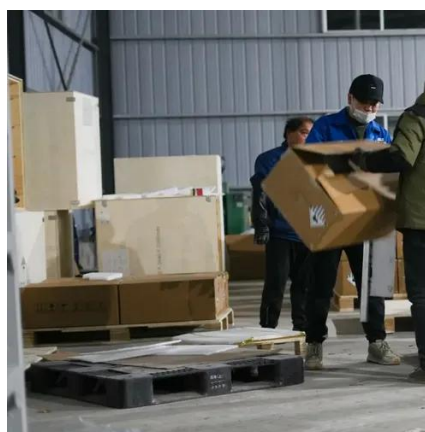
### How to connect solar panels to distinguish positive and negative poles

Most solar panels have a junction box on the back, where terminals are labeled typically with a plus sign (+) for positive and minus sign (-) for negative. If labels are not present or unclear, ...



## [Do Photovoltaic Panels Have Positive and Negative Wires? Let's ...](#)

The Bare Wires Truth: PV Panel Polarity Explained  
Contrary to what some DIY solar videos might suggest, photovoltaic panels absolutely do have designated positive and negative terminals.

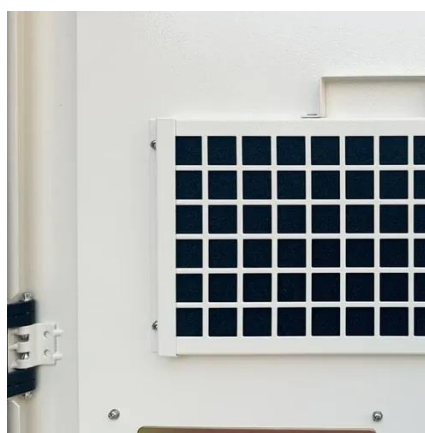


## [Connect the positive and negative wires of the photovoltaic panel](#)

Wiring solar panels in parallel means connecting the positive terminal of one panel to the positive terminal of another, and then the negative terminals together as well.

## [How to distinguish positive and negative poles in photovoltaic panels](#)

Solar panels feature positive and negative terminals. Wiring solar panels in series means wiring the positive terminal of a module to the negative of the following, and so on for the whole string.



## **Photovoltaic panel wiring positive**



## **and negative**

Series wiring involves connecting the positive terminal of one solar panel to the negative terminal of another, while parallel wiring involves connecting the positive terminals together and the ...



## Contact Us

---

For catalog requests, pricing, or partnerships, please visit:

<https://www.firmaskrzypek.pl>

Phone: +48 22 426 71 90

Email: [info@firmaskrzypek.pl](mailto:info@firmaskrzypek.pl)

Scan the QR code to access our WhatsApp.

