



Area of a 580 photovoltaic panel





Overview

A typical home solar panel is about 3 feet wide by 5.5 feet long, occupying an area of roughly 17. Can you put a 5kW solar system on your roof?

For that, you will need to know what size is a typical 100-watt solar panel, right?

To bridge that gap of very useful knowledge needed. Estimate how many solar panels fit your roof and the total system capacity (kW) based on roof area and panel specifications. Formula: $\text{Panels} = (\text{Roof Area} \times \text{Usable \%} \times (1 - \text{Spacing Loss \%})) \div \text{Panel Area} \rightarrow \text{Total Capacity (kW)} = \text{Panels} \times \text{Panel Wattage} \div 1000$. What is “layout factor” and why does it matter?

The layout factor scales the raw module footprint to include spacing for shade clearance, walkways, access paths, parapets, setbacks and BOS. To get started, you will need to measure the length and width of your roof in feet. Enter these dimensions into the. Axitec 580W Solar Panel 144 Cell Bifacial AC-580TGB/144TS.



Area of a 580 photovoltaic panel

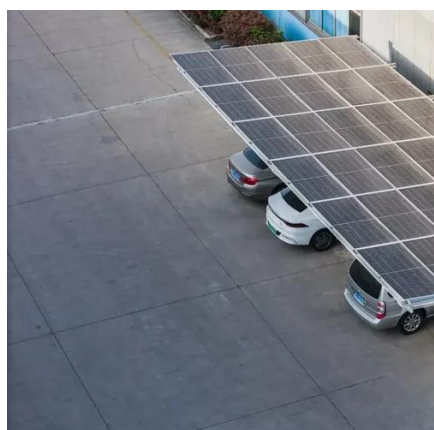


[Total Area Required for Solar Panel Installation Calculator](#)

Calculate the total area needed for your solar panel installation quickly and accurately with our easy-to-use solar panel area calculator.

[Rooftop Area Calculator for Solar Installation , Estimate in Sq.Ft](#)

Use the Dhyuti Solar Space Requirement Calculator to quickly estimate the available rooftop area for solar panel installation based on your roof's length and width. This tool is ideal for commercial ...

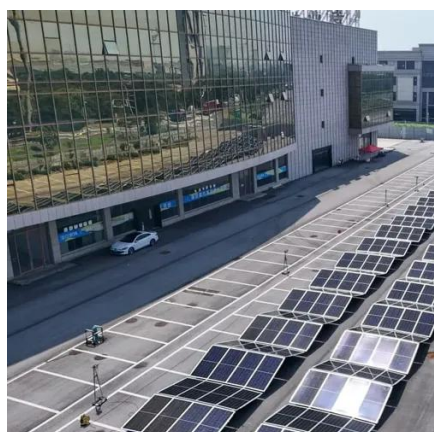


[A Guide on Calculating Area Required for Solar Panel Installation](#)

Once you have estimated the number and size of solar panels you need, you have to determine the area required on your rooftop, backyard, or garden to install solar systems and enjoy ...

[How much area is needed for solar panel installation](#)

For a quick idea of how much roof space you'll need, here are five steps you can take when calculating area for solar panels on your property.
Step 1: Determine your daily electricity ...



[Axitec 580W Solar Panel 144 Cell Bifacial AC-580TGB/144TS](#)

Axitec 580W Solar Panel 144 Cell Bifacial AC-580TGB/144TS Axitec 590W Solar Panel 144 Cell Bifacial AC-590TGB/144TS not the cheapest but definitely worth the performance. Axitec ...

[Roof Area to Solar Panel Capacity Calculator \(kW Estimator\)](#)

This Roof Area to Solar Panel Capacity Calculator helps homeowners and installers estimate total panel count and system size based on roof area, panel dimensions, and layout efficiency.



Solar Panel Size Calculator

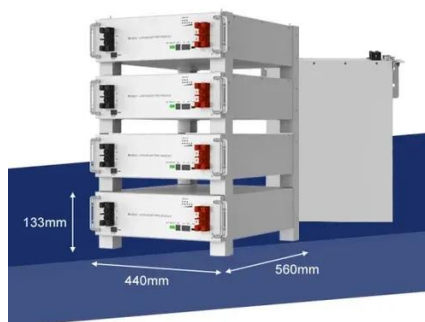
Definition: This calculator estimates the required solar panel area based on power needs, panel efficiency, and solar irradiance. Purpose: It helps homeowners, engineers, and solar installers ...

[How to calculate the surface area](#)



required by solar panels

Accurately calculating the surface area required for solar panel installation is essential for optimizing energy production and maximizing your investment. By considering factors like energy ...



Standard Solar Panel Sizes And Wattages (100W-500W Dimensions)

It takes up 6.07 sq ft of area. If you have a 1000 sq ft roof, and you can use 75% of that roof area for solar panels, you can theoretically put 123 100-watt solar panels on a 1000 sq ft roof. A typical 300 ...

Axitec 580W Solar Panel 144 Cell Bifacial AC ...

Axitec 580W Solar Panel 144 Cell Bifacial AC-580TGB/144TS



Solar Panel Roof Area Calculator - self2solar

This calculator is designed to help you determine the number of solar panels that can be installed on your roof based on your available space and selected panel dimensions.



Contact Us

For catalog requests, pricing, or partnerships, please visit:

<https://www.firmaskrzypek.pl>

Phone: +48 22 426 71 90

Email: info@firmaskrzypek.pl

Scan the QR code to access our WhatsApp.

