



BOP control system accumulator pressure is





Overview

The accumulators shall be able to support all the BOP functions and still have a pressure of 200 psi above the precharge pressure. The operating pressure of accumulators is generally 3000 psi. All diverter functions can be operated from the diverter master panel or remotely from the driller's control panel and the. Selecting the right BOP accumulator units and BOP closing units is critical to ensuring dependable hydraulic power for blowout preventers across drilling, completion, and well intervention activities in the oil and gas industry. An accumulator unit is a pressure vessel used in oil and gas well. The Accumulator Unit is one of the most important and dangerous systems in the prime and any misunderstanding of how it works can result in the loss of well control. The BOP Control Units provide and controls hydraulic fluid to operate he blowout preventer stack and associated equipment.



BOP control system accumulator pressure is

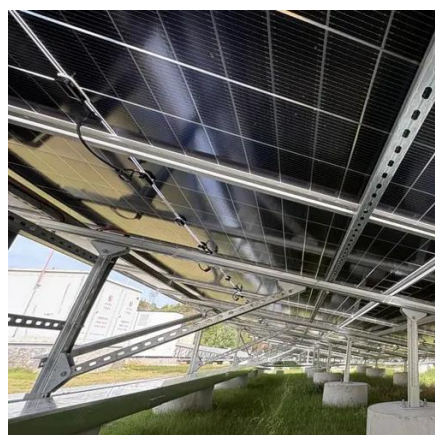


BOP Control Unit Acceptance & Inspection

Hydraulic operating equipment shall have at least a 3,000 psi BOP accumulator unit equipped with two regulator valves, one to reduce the operating fluid pressure to 1,500 psi and the ...

[BOP Control System, BOP Control Unit, BOP Accumulator Unit, BOP](#)

A Shear Boost of Blowout Preventer (BOP) Control System is a high pressure hydraulic power unit fitted with directional control valves to boost the shear pressure to safely control kicks and prevent ...



[BOP Accumulator Units & Closing Units for Drilling Operations , MEYER](#)

This stored hydraulic pressure enables controlled closing of the BOP when required, with pressure capacity and configuration varying based on the type and operating requirements of the BOP.

[Accumulator for Well Control Systems , BOP Control , SABA Drilling](#)

Our accumulator units are built to deliver instant, fail-safe hydraulic pressure--ensuring seamless activation of your blowout preventers and well control systems.



[RCU Model DATA SHEET BOP Control Units TS-052 Rev. A](#)

Operating Pressure: 3000 PSI or 5000 PSI on request. The BOP Control System meets all curr. quirements and customer specifications. Pump Systems Electric and air-operated pumps used ...

BOP Accumulator Requirements & Inspections

Accumulators commonly have minimum working pressures of 1200 psi and maximum working pressures of between 1500 and 3000 psi. Accumulators are ASME-coded pressure vessels ...



[BOP Accumulator Pressure Not Recovering Q54#BOP #WellControl #](#)

After a full BOP function test, the accumulator pressure should return to standby within the OEM specified time. If it does not, this indicates a potential problem in the hydraulic or nitrogen system.

Accumulating Unit (BOP Control



System)

The Accumulator Unit is a backup hydraulic power system responsible for: Open and Close BOP Rams and Prevent Cancel Working on a power outage in the first Ensure complete control of the well and ...



[Hydraulic Accumulator Systems Guide . PDF , Pump , Valve](#)

The document describes how accumulators store hydraulic fluid under pressure to rapidly operate blowout preventers when needed. It discusses how accumulators compress nitrogen to store ...

BOP Accumulator Units

BOP Accumulator Units meet or exceed the design specification as specified in API 16D. Each control system is specifically engineered to assure reliable control of the BOP stack with adequate reserve ...





Contact Us

For catalog requests, pricing, or partnerships, please visit:

<https://www.firmaskrzypek.pl>

Phone: +48 22 426 71 90

Email: info@firmaskrzypek.pl

Scan the QR code to access our WhatsApp.

