



Base station power supply connected to bu





Overview

Auxiliary power is used to provide secondary power within a BBU. Amphenol's advanced power interconnect solutions address the critical challenges of BBU and PSU design in OCP-based data centers. Modern data center architectures. Part 5 of this article series explains the significance of auxiliary power within the Analog Devices battery backup unit (BBU) reference design. Operations and Architectures of a Radio Base Station (BTS) : Antennas Antennas act as transmitters and receivers of radio frequency (RF) signals. • Only when the BBU install in TP48200A and APM30H cabinets, subrack cable claws are configured. Alarm outputs are available on the BBU for the ONT to.



Base station power supply connected to bbu

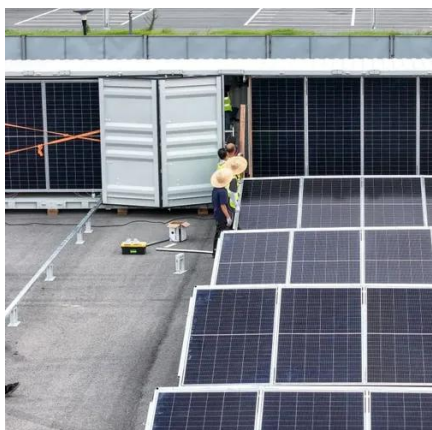


[Smart Battery Backup for Uninterrupted Energy Part 5: ...](#)

This article explains the significance of auxiliary power within the Analog Devices battery backup unit (BBU) reference design.

OPUS/BBU Model installation manual

The OPUS/BBU (ONT Power Supply Unit/Battery Back-up Unit) consists of a dedicated AC to 48V DC power supply and a battery backup unit. The OPUS/BBU is designed to be mounted inside a ...



[Robust BBU and PSU Interconnects for OCP-Based Data Centers](#)

Amphenol's advanced power interconnect solutions address the critical challenges of BBU and PSU design in OCP-based data centers. Explore the interconnects that deliver high ...

PSU plus BBU , FSP TECHNOLOGY INC.

FSP's PSU plus BBU is an all-in-one power solution that integrates an AC/DC power supply, DC/DC charging and discharging circuits, and a BBU (Battery Backup Unit). It functions not ...



[ADI OCP ORV3 BBU Reference Design \[Analog Devices Wiki\]](#)

Designed for deployment on a BBU Shelf within a data center rack, a Battery Back-up Unit (BBU) serves the purpose of supplying DC power to system loads in the event of sudden power interruptions.



[An Introduction to 5G and How MPS Products Can Optimize a ...](#)

This article described the basics of 5G and introduced two MPS parts -- the MPQ8645 and MP87190 -- that can be used to improve the AAU or BBU architecture within a 5G base cell station.



[How BTS works: Antennas, RRU, BBU, TMA, Power Supply](#)

The RRU is connected to the BBU via fiber optic cables (CPRI). This design eliminates the need for TMAs, reduces RF losses, and improves energy efficiency.



Battery Backup Unit



During normal operation, the range extender is powered by the integrated AC power supply. The BBU enters discharge mode and begins providing power to the range extender when the AC power is ...



- ✓ IP65/IP55 OUTDOOR CABINET
- ✓ OUTDOOR MODULE CABINET
- ✓ OUTDOOR 5G BASE STATION CABINET
- ✓ WATERPROOF

[BBU Quick Installation Guide \(V100R005C10_04\) \(PDF\)-EN.pdf](#)

Connect the M6 OT terminal at the other end to an external ground.

Baseband Unit (BBU)

Learn about STMicroelectronics' baseband unit solutions for telecom infrastructure, providing efficient and reliable connectivity.





Contact Us

For catalog requests, pricing, or partnerships, please visit:

<https://www.firmaskrzypek.pl>

Phone: +48 22 426 71 90

Email: info@firmaskrzypek.pl

Scan the QR code to access our WhatsApp.

