



Battery selection for power station energy storage system





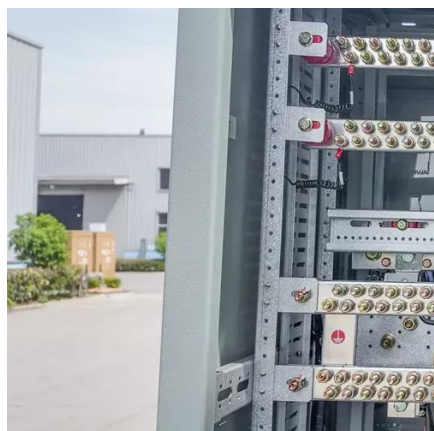
Overview

In summation, choosing the appropriate battery for energy storage power stations involves delving into a multitude of factors, spanning from energy density, lifecycle costs, and efficiency metrics to environmental implications and emerging innovations. A battery energy storage system (BESS) is an electrochemical device that charges (or collects energy) from the grid or a power plant and then discharges that energy at a later time to. ers lay out low-voltage power distribution and conversion for a b de ion - and energy and assets monitoring - for a utility-scale battery energy storage system entation to perform the necessary actions to adapt this reference design for the project requirements. Department of Energy (DOE) Federal Energy Management Program (FEMP) and others can employ to evaluate performance of deployed BESS or solar photovoltaic (PV) +BESS systems. The. What kind of battery should be used in energy storage power station?

1. ENERGY STORAGE BATTERY TYPES, 2.



Battery selection for power station energy storage system



Science 101: Batteries

What is a battery? Batteries power our lives by transforming energy from one type to another. Whether a traditional disposable battery (e.g., AA) or a rechargeable lithium-ion battery (used in cell phones, ...

Battery , Composition, Types, & Uses , Britannica

Batteries are divided into two general groups: (1) primary batteries and (2) secondary, or storage, batteries. Primary batteries are designed to be used until the voltage is too low to operate a ...



Battery Energy Storage System Evaluation Method

This report describes development of an effort to assess Battery Energy Storage System (BESS) performance that the U.S. Department of Energy (DOE) Federal Energy Management Program ...

Battery at Batteries Plus

Power your household devices and battery-operated appliances with our vast selection of alkaline batteries. Find traditional sizes, like AA, AAA, C, D, and 9 volt, as well as unique, harder-to-find ...



How do batteries work? A simple introduction

What is a battery? A battery is a self-contained, chemical power pack that can produce a limited amount of electrical energy wherever it's needed.

[Battery Energy Storage System Design: Key Principles and Best ...](#)

This comprehensive guide covers capacity requirements, battery selection, system integration, and key technologies like energy management systems and safety measures.



Car Batteries & Replacement , Pep Boys

CAR BATTERY REPLACEMENT At Pep Boys, we know batteries. If you need a new one, you can shop our batteries now. Or if you just want to make sure your battery is prepared for colder temperatures, ...

[Design Engineering For Battery Energy](#)



Storage Systems: Sizing

In this technical article we take a deeper dive into the engineering of battery energy storage systems, selection of options and capabilities of BESS drive units, battery sizing ...



Designing Safe and Effective Energy Storage Systems: Best Practices ...

Battery energy storage systems (BESS) are vital for modern energy grids, supporting renewable energy integration, grid reliability, and peak load management. However, ensuring their ...

DOE Explains Batteries , Department of Energy

Once charged, the battery can be disconnected from the circuit to store the chemical potential energy for later use as electricity. Batteries were invented in 1800, but their complex chemical processes are ...



Electric battery

When a battery is connected to an external electric load, those negatively charged electrons flow through the circuit and reach the positive terminal, thus causing a redox reaction by attracting ...

Amazon : Battery



Duracell CR123A 3V Lithium Battery, 2 Count Pack, 123 3 Volt High Power Lithium Battery, Long-Lasting for Home Safety and Security Devices, High-Intensity Flashlights, and Home Automation



Utility-scale battery energy storage system (BESS)

This reference design focuses on an FTM utility-scale battery storage system with a typical storage capacity ranging from around a few megawatt-hours (MWh) to hundreds of MWh.

What kind of battery should be used in energy storage power station

In summation, choosing the appropriate battery for energy storage power stations involves delving into a multitude of factors, spanning from energy density, lifecycle costs, and ...



Grid-Scale Battery Storage: Frequently Asked Questions

A battery energy storage system (BESS) is an electrochemical device that charges (or collects energy) from the grid or a power plant and then discharges that energy at a later time to provide electricity or ...



Car Battery



Get a new car battery to keep your car working right. We offer Same Day Pickup in our stores, or get Next Day Delivery on qualifying purchases.



What is a Battery?

Historically, the word "battery" was used to describe a "series of similar objects grouped together to perform a function," as in a battery of artillery. In 1749, Benjamin Franklin first used the term to ...

SECTION 6: BATTERY BANK SIZING PROCEDURES

Smallest cell capacity available for selected cell type that satisfies capacity requirement, line 6m, when discharged to per-cell EoD voltage, line 9d or 9e, at functional hour rate, line 7. OR, if no single cell ...



[A framework for the design of battery energy storage systems in ...](#)

This paper introduced, derived, and validated a methodology for evaluating the optimal electric power delivery policy, with a (time)step-by-(time)step approach, of battery energy storage ...

[Battery Storage System Design: What](#)



Installers Need to Know

For solar installers, understanding the nuances of battery storage system design is essential to optimizing performance, complying with regulations, and delivering a cost-effective ...





Contact Us

For catalog requests, pricing, or partnerships, please visit:

<https://www.firmaskrzypek.pl>

Phone: +48 22 426 71 90

Email: info@firmaskrzypek.pl

Scan the QR code to access our WhatsApp.

