



Bucheng Power Plant Wind Blade Accident





Bucheng Power Plant Wind Blade Accident

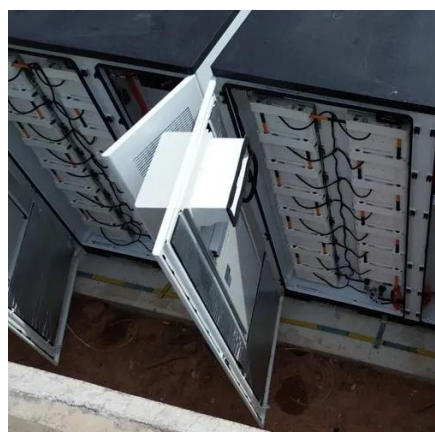


How Many Accidents Are Caused by Wind Turbines?

Mechanical failure is a significant concern in the wind industry, as it can lead to catastrophic wind turbine accidents. One of the most common causes of mechanical failure is blade ...

[Akita man dies after broken blade falls from wind turbine](#)

AKITA--An elderly man died on May 2 after being found collapsed on the ground near a broken blade from a wind turbine here, police said. Akita prefectural police are investigating whether ...



[Man Dies After Wind Turbine Blade Falls in Akita; Strong Winds Delay ...](#)

AKITA -- A man was found unconscious near the blade of a wind turbine, which had broken off and fallen, in Akita, and taken to a hospital where he was confirmed dead on Friday ...

[Accidents Involving the Transportation of Wind Turbine Blades: Why](#)

Wind turbine blades are a crucial component of the renewable energy infrastructure, but their transportation poses significant risks. The accidents mentioned above highlight the dangers of ...



[Wind turbine breaks in Japan, man found dead nearby](#)

A blade of a wind turbine on the coast of Akita, northeastern Japan, has broken off, and a man found collapsed nearby was confirmed dead Friday, local authorities said.



[No, wind turbines are not likely to fall on your head, and there is no](#)

Falling blades from failing wind farms could be launched your way at any moment. While the claim purports that wind turbine blades are prone to breaking in mid-air and threatening the ...



[A consecutive Vestas turbine accident in the US: Safety and ...](#)

Three different Vestas turbines have collapsed since April 2024, with the last incident occurring on November 1, 2024. In these accidents, blades were shattered, sometimes resulting in ...



[81-Year-Old Man Killed by Falling Wind](#)



Turbine Blade in Akita's ...

A fatal accident occurred on May 2, 2025, in Akita City, Japan, when a blade from a wind turbine fell at a coastal park in the Shin'ya area. An 81-year-old man was found unconscious near the ...



Summary of Wind Turbine Accident data to 30 September 2024

common causes of accidents are fire and poor maintenance. A further GCube report in November 2015 stated that there are an average 50 wind turbine fires per year, and this remains ...



Contact Us

For catalog requests, pricing, or partnerships, please visit:

<https://www.firmaskrzypek.pl>

Phone: +48 22 426 71 90

Email: info@firmaskrzypek.pl

Scan the QR code to access our WhatsApp.

