



C41212mm photovoltaic support steel weight





Overview

The following table lists the theoretical weight of T-section steel beams in kg/m (kilograms per meter). This comprehensive chart serves as a valuable reference for engineers, architects, and construction professionals. The tracking photovoltaic support system consisted of 10 pillars (including 1 drive pillar), one axis bar, 11 shaft rods, 52 photovoltaic panels, 54 photovoltaic support purlins, driving devices and 9 sliding bearings, and also includes the connection between the frame and its axis bar. Total length was. Example: C100×50×20×2. Use: Medium-span carport structures (5–6m spans) or high-wind regions (e. made from steel, aluminum, nickel, iron, copper and other commonly used metals. Calculating the weight of any type of metal product: beams, profiles of. As solar installations hit record numbers globally (over 280 GW installed in Q1 2025 alone), engineers face mounting pressure to optimize structural components. Here, we do an analysis on how to optimise solar PV mounting. To show how post configuration, steel thickness and strength can be optimized using higher strength steels to reduce the post pile driving/installation time; and subsequent sustainability benefits through reduced installation time/equipment usage and quantity/weight of steel used for pile driven.



C41212mm photovoltaic support steel weight



[Benefits and Sustainability of Using Higher Strength Steel Posts ...](#)

By using higher strength steel C-channel posts with a thinner and an optimized profile, pile driving time per post can be reduced; and the amount of steel needed and weight is less, resulting in a smaller ...



Metal Weight Calculator

Round Metal Bar
Rectangular Or Square Metal Bar
Hexagonal Metal Bar
Metal Sheet
Metal Tubing
Rectangular Metal Profile
L-Profile
U-Profile
I-Profile
Metal T-Profile
The I (small L) profile is just two metals planks welded or cast together, at an angle of 90 degrees. It is basically a base and a flange on just one side. We support metal weight

Metal Weight Calculator

Use this metal weight calculator to calculate the weight of beams, bars, sheets, columns, tubings, etc. made from steel, aluminum, nickel, iron, copper and other commonly used metals.



[A Detailed Technical Breakdown of C-section Steel Profiles for](#)

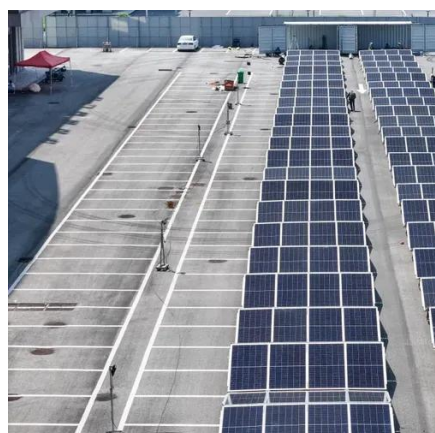
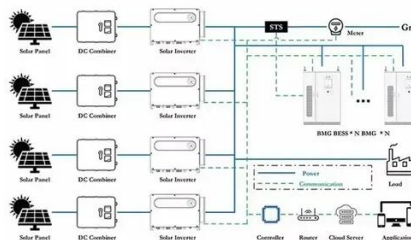
? Q235B/Q355B ? : Standard carbon steel for inland projects (cost-effective, tensile strength: 375-500 MPa).
? Q355D/Q420C ? : Low-alloy grades for Arctic applications (e.g., -35°C impact ...



calculations for metal angles with equal or unequal arms. See more on gigacalculator mazurska-osada.pl

Calculating the Weight of Steel Coils for Photovoltaic Support Systems

The weight of steel coils used in photovoltaic supports isn't just about material costs - it's a make-or-break factor for project viability. But here's the kicker: a 10% weight reduction in mounting systems ...



PHOTOVOLTAIC SUPPORT WEIGHT PER MW

The photovoltaic modules are mounted on supporting structures made of hot-dip galvanized steel, the size of which must support the weight of the modules, the wind speed of 144 km / h (taking into ...

Photovoltaic support steel weight table

At present, the commonly used solar photovoltaic supports are mainly composed of concrete support, steel support and aluminum alloy support. Concrete support is



DETAILS AND PACKAGING



[Photovoltaic bracket C-shaped steel weight per meter](#)

Whether you are looking to estimate the weight of alloy, aluminum, cold-finished steel, hot rolled steel, stainless steel, or another material - O'Neal Steel's metal weight calculator allows for



Structures and support profiles for photovoltaic modules

The support structures are the elements that allow the fixing of the modules on the roofs where the photovoltaic installation must be housed, constituting a main element of the solution. Circutor offers a ...



Calculating the Weight of Steel Coils for Photovoltaic Support Systems

The weight of steel coils used in photovoltaic supports isn't just about material costs - it's a make-or-break factor for project viability. But here's the kicker: a 10% weight reduction in mounting systems ...

Solar photovoltaic bracket C-shaped steel weight calculation

Application of Photovoltaic Brackets. With the features of green, solid, economical, durable, fast & easy to install and good looking, double-in-roll c-shaped steel photovoltaic bracket and other





Contact Us

For catalog requests, pricing, or partnerships, please visit:

<https://www.firmaskrzypek.pl>

Phone: +48 22 426 71 90

Email: info@firmaskrzypek.pl

Scan the QR code to access our WhatsApp.

