



Can a 12v 5A be used with a 500W inverter





Overview

With a 500W power inverter, you have the option of using it inside a vehicle via the 12V outlet or directly hooking up to a battery. To determine how long will a 12v battery last with a 500W inverter, we need to consider several factors: Let's break down the calculation process step by step: How to Calculate Battery Runtime with a 500W Inverter?

Deep cycle batteries, designed to provide a sustained amount of power over an. When it comes to a power inverter that is as useful for your car as it is for your home, then nothing beats the utility of a 500 watt inverter. It enables you to run all sorts of. At full power that 500W inverter, if it's 80% efficient, will draw $500/12 \times 1.1$. pretty much the same as running all the glow plugs. The answer depends on multiple factors, such as battery capacity, inverter efficiency, and the power consumption of connected devices. Thus, $\text{Current} = 500\text{W} / 12\text{V} =$ approximately 41.



Can a 12v 5A be used with a 500W inverter

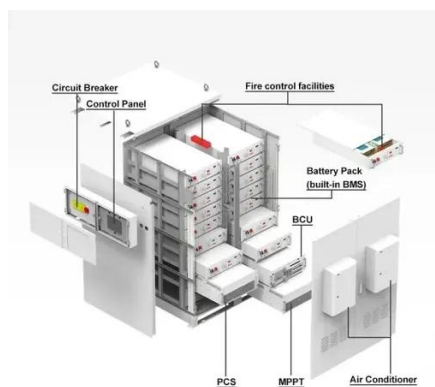


How Long Will a 12V Battery Last with an Inverter?

By following these steps, you can estimate how long your 12V battery will last with a specific inverter and power load. This information lets you plan your energy usage more effectively and ensure sufficient ...

What can I run on a 500 watt inverter?

In conclusion, a 500 watt inverter can power small electronic devices and appliances with power requirements less than 500 watts. However, larger appliances with higher power requirements may ...



How long will a 12V battery last with a 500W inverter?

By using a simple DC-to-DC plug (like a cigarette lighter outlet) or a dedicated 12V fuse box, you bypass the inverter completely, eliminating the 10% efficiency loss and significantly boosting ...

How to Accurately Calculate the Current Draw for a 500W Inverter

To calculate current draw for a 500W inverter on a 12V system, use the formula: Current (A) = Power (W) / Voltage (V). Thus, Current = 500W / 12V = approximately 41.67A under ideal ...



Amazon : Customer Questions & Answers

If you ignore the complicated math, your 500W space heater presents about a 42A load at 12V (plus a little extra for the inverter) so you can expect a good bit less than 2 hours

[Will power inverters hurt the battery? 500 w inverter](#)

It will only pull around 4 to 5 amps at 12 volts. Any power point in your car will do, they are all fused at 15 amps. Most inverters have a low battery voltage shut off built in them, so if your battery ...



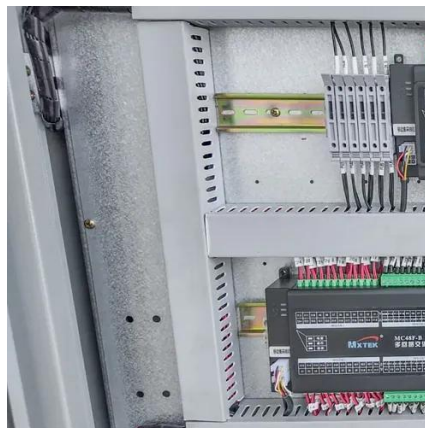
[How Long Will a 12v Battery Last With 500w Inverter?](#)

Doing so may strain the inverter and potentially shorten its lifespan. Instead, it is advisable to connect an AC load that is within 80% of the inverter's total capacity.

What Battery for a 500-Watt Inverter



To calculate the amps required you divide the Watts by the voltage. The voltage in a battery bank is usually between 12v and 24v depending on how you wire the system.



What can a 500 watt inverter run?

With a 500W power inverter, you have the option of using it inside a vehicle via the 12V outlet or directly hooking up to a battery. To connect to your 12V outlet in your car you simply need to plug in using ...

[How Long Will a 12V Battery Last When Using an Inverter](#)

When connected to a 500W inverter (92% efficiency), a 12V battery will run for 1.7664 hours. These are the methods for calculating battery life.





Contact Us

For catalog requests, pricing, or partnerships, please visit:

<https://www.firmaskrzypek.pl>

Phone: +48 22 426 71 90

Email: info@firmaskrzypek.pl

Scan the QR code to access our WhatsApp.

