



Can a 12v motor drive an inverter





Overview

A typical 12-volt car battery can safely support an inverter ranging from about 150 watts up to 600 watts for regular use without harming the battery. The decision of whether a vehicle needs to be running to operate a power inverter depends entirely on the power demand of the connected devices and the duration of use. Why is this the case?

the car are full of motors driven by inverters. An inverter is an electronic device that converts AC power to DC power. It can also be made into an.



Can a 12v motor drive an inverter



[Do I Need an Inverter for a 12V Battery? Running Appliances Made Easy](#)

Yes, you need an inverter to run standard appliances on a 12V battery. Most household appliances use alternating current (AC), while a 12V battery provides direct current (DC). An inverter ...

Can/Should DC-AC Inverter Be Used To Power ...

Trying to make an inverter (or buy), to power a 120VAC motor ...



How to run a 12v dc motor on 120v ac?

A 12V DC motor is designed to operate on 12V direct current, while 120V AC is a high voltage alternating current. However, it is possible to run a 12V DC motor on 120V AC by using a ...

What size inverter can you run off a car battery?

Standard 12V car batteries safely support inverters up to around 600 watts for general use. Battery capacity (Ah), inverter efficiency, and load determine practical inverter size and runtime.



5 Best 12V Car Power Inverters 2025

Finding the right 12V power inverter can transform your car, RV, or boat into a mobile power station. These devices convert DC battery power into AC electricity, letting you run laptops, phones, small ...

How to use a 12V motor as a 12V to 220V inverter

What everyone is most concerned about may be why this motor can be used as an inverter. In fact, to put it bluntly, the inverter converts DC power into AC power, and finally boosts it ...



[Does the Car Need to Be Running to Use an Inverter?](#)

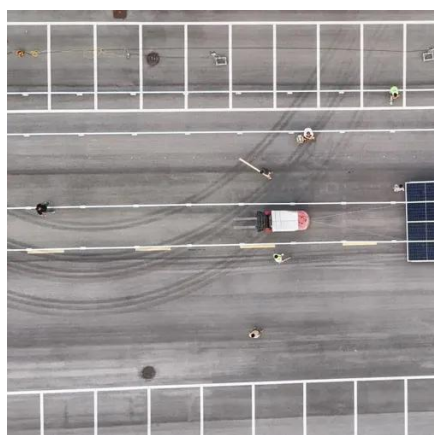
Determine if your engine needs to be on. We explain power source limits, calculate battery draw, and ensure safe, sustainable inverter use.

How DC/AC Power Inverters Work ,



HowStuffWorks

In the majority of cases, you'll be using a 12-volt battery, so you would want to select a 12-volt inverter. The next step is to determine which devices you plan to power with the inverter.



[Can/Should DC-AC Inverter Be Used To Power Inductive Loads \(AC Motor\)?](#)

Trying to make an inverter (or buy), to power a 120VAC motor using a 12V lead acid battery. However, after many hours of searching it seems that inverters are not intended to operate ...

[Inverter for Car: Everything You Need to Know Before You Plug In](#)

A car power inverter converts the direct current (DC) from your car's 12V battery into alternating current (AC), the same type of electricity found in home outlets.



Can I run a 2000 watt inverter on a 12V battery?

The answer is that 12V batteries can drive a 2000W inverter, but the operating time may not be too long. First, let us deeply understand the essence of this problem. The 2000W inverter has ...



Contact Us

For catalog requests, pricing, or partnerships, please visit:

<https://www.firmaskrzypek.pl>

Phone: +48 22 426 71 90

Email: info@firmaskrzypek.pl

Scan the QR code to access our WhatsApp.

