



Can photovoltaic panels be directly connected to resistors





Overview

Connecting resistors to small solar panels involves several crucial steps: 1. Implementing proper wiring methods for safe connections. 2) in series connected directly to an axial fan driven by an EC motor (rated voltage 48V). This configuration has worked well in the past but I need a bit more airflow. I. When you put a powered solar system in series with a resistor, does the restore work exactly like it would with a battery of similar voltage?

Solar panels have their own unique behaviour. The smaller the resistor you put on the panel, the less voltage across the panel, and the more the current. We're going to make a simple circuit where we connect a solar panel to a resistor.



Can photovoltaic panels be directly connected to resistors



Why do solar panels have resistors? , NenPower

Solar panels generate direct current (DC), and the inclusion of resistors aids in maintaining optimal voltage levels to prevent equipment overload. Adjusting voltage helps in protecting sensitive ...

Does a Photovoltaic Panel Controller Have Resistors? Let's Demystify!

Before we zoom in on resistors, let's set the stage. A photovoltaic panel controller, aka solar charge controller, acts as the "traffic cop" between your solar panels and battery bank.



Ohms law in solar panel

You are confusing resistors and ideal voltage sources with solar panels. Pick one and understand how it works. Then move on to the other.

How do Solar Panels handle resistors? : r/SolarDIY

Resistor regulation is very inefficient and is a bad idea. Use a proper solar controller - or, if you want to hack something DIY together, an adjustable DC-DC buck converter.



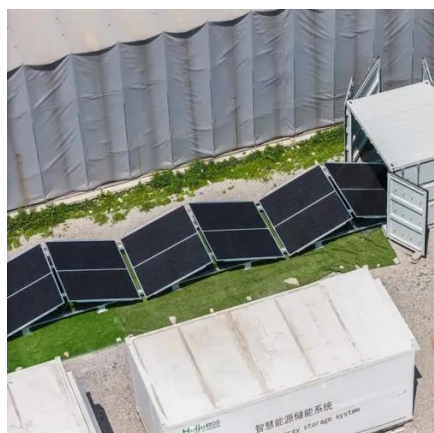
Resistor to limit maximum voltage of solar panels

You can de-power the panels by tilting them away from the sun, then slowly tilt them toward the sun while watching the voltage and current in the motor. If it is too much, you may have to add a resistor.



[Solar Charger Tutorial - Part 2 , Voltaic Systems Blog](#)

Measure Voltage and current through multiple resistors: If you haven't already, strip the leads on your panel and connected them directly into the breadboard as shown below.



Resistor to limit maximum voltage of solar panels

You can de-power the panels by tilting them away from the sun, then slowly tilt ...

How do solar panels interact with



resistors?

Solar panels have their own unique behaviour. The smaller the resistor you put on the panel, the less voltage across the panel, and the more the current coming out will increase.



[How to connect resistors to small solar panels , NenPower](#)

Begin by identifying the maximum current output of the solar panel. Then, establish the voltage specifications of any load or device you plan to connect. By plugging these values into the ...



How do solar panels interact with resistors?

Solar panels have their own unique behaviour. The smaller the ...



USING SOLAR TO DIRECT DRIVE A RESISTIVE LOAD

Solar panel direct load only works with a motor, solar powered fan or water pump. Most electronics and appliances cannot be directly loaded because they are sensitive to voltage fluctuations.

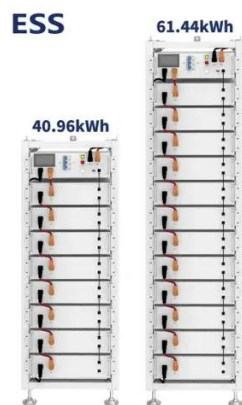


Internal resistance of photovoltaic



panels

The objective of this paper is to introduce the integration of the diverse factors that affect the performance of Photovoltaic panels and how those factors affect the





Contact Us

For catalog requests, pricing, or partnerships, please visit:

<https://www.firmaskrzypek.pl>

Phone: +48 22 426 71 90

Email: info@firmaskrzypek.pl

Scan the QR code to access our WhatsApp.

