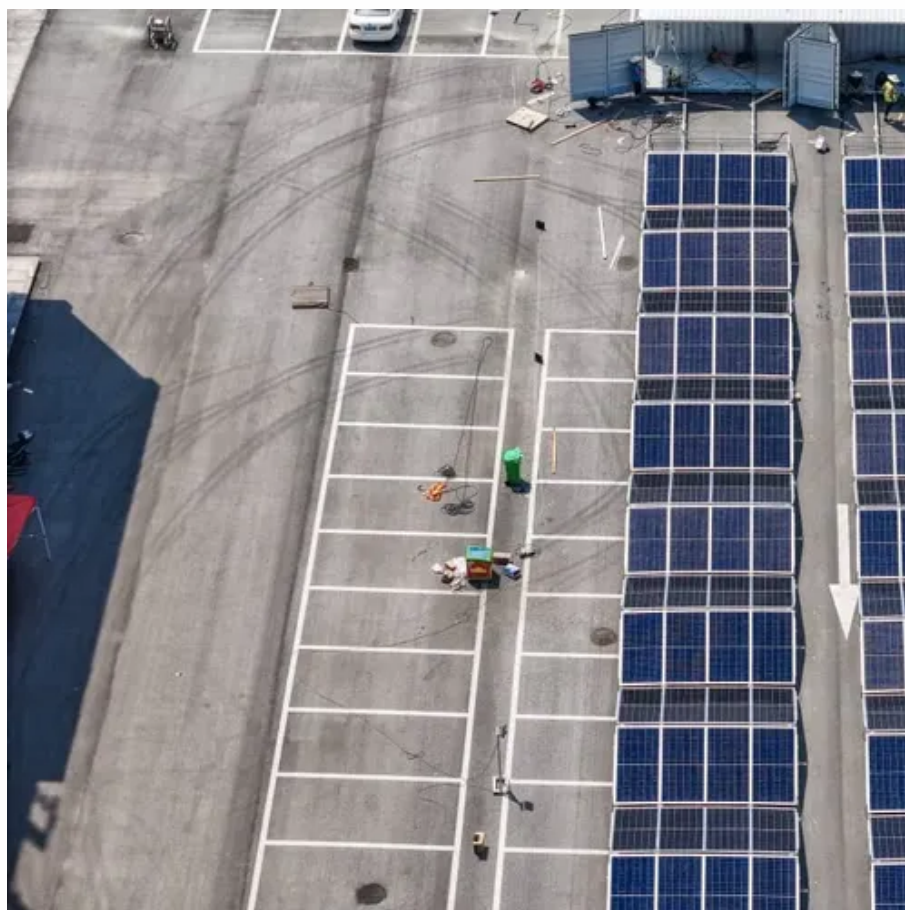




Can the battery cabinet be equipped with an odd number





Overview

These cabinets can be equipped as needed, with perforated shelves (with high load capacity - 100kg per level) and retention trays in the lower part of the cabinet to prevent possible. These cabinets can be equipped as needed, with perforated shelves (with high load capacity - 100kg per level) and retention trays in the lower part of the cabinet to prevent possible. ection of a battery installation by an inspector. These are the National Electrical Code \square (NEC \square /NFPA 70 \square)¹ and the Standard for Ele trical Safety in the Workplace \square (NFPA 70E \square)². This paper will examine recent battery-related changes in both documents as well as changes in the NFPA 70E Handbook \square . Section 480. 9 (E) requires any personnel doors intended for entrance to, and egress from a battery room, to open in the direction of egress and be equipped with listed panic hardware. Below is a preview of the NEC \square . ORG for the complete code section. Once there. I have an OK plan for a two battery bank. The pair of 6V are about 5% cheaper but they provide 4% less capacity, so there isn't a strong distinction between the solutions. Also note any visible external damage that may have occurred during transit.



Can the battery cabinet be equipped with an odd number

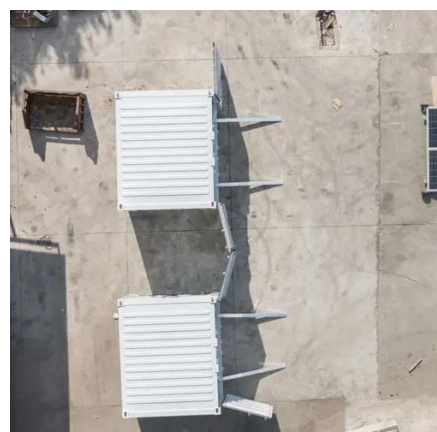


Battery bank questions: odd number, mixed aH, etc

In terms of space, I can use two 220ah 6V, or I can use two 115ah 12V. The pair of 6V are about 5% cheaper but they provide 4% less capacity, so there isn't a strong distinction between ...

NFPA 70 and NFPA 70E Battery-Related Codes Update

Abstract action of a battery installation by an inspector. These are the National Electrical Code (NEC /NFPA 70)1 and the Standard for Electrical Safety in the Workplace (NFPA 70E)2. This paper will ...



[BC58 Battery Cabinet Installation, Operation, & Maintenance ...](#)

Battery cabinets that are not supplied with an incorporated DC output disconnect device must have an appropriate disconnect device provided external to the cabinet.

[Can the battery cabinet be equipped with an odd number](#)

Cabinet-mounted VRLA batteries can be expected to operate in a warmer environment than on a rack, thereby potentially reducing the operational life of the battery.



480.9 Battery Locations.

Section 480.9 (E) requires any personnel doors intended for entrance to, and egress from a battery room, to open in the direction of egress and be equipped with listed panic hardware.

Battery Cabinet

If the cabinet is equipped with a battery charger, AC power must be provided. The battery cabinet may be equipped with a pre-terminated AC power cord, an inlet socket for a molded cord or a terminal ...



Checklist: Venting Clearance and Code Rules for ...

Stop battery overheating. This checklist details essential venting clearance and code rules for safe, compliant battery cabinet installation.

2018 International Solar Energy



Provisions (ISEP)

Where top terminal batteries are installed on tiered racks or on shelves of battery cabinets, working space in accordance with the battery manufacturer's instructions shall be provided between the ...



Owner's Manual Extended-Run Battery Cabin

Do not attempt to stack the battery cabinet. Attempting to stack the battery cabinet may cause permanent damage and create a potential for serious personal injury.

BATTERY CABINETS CATALOGUE

Once the battery cabinets have been installed, commissioning is very simple. In any case, to avoid errors or disservices, read the installation manual or, if in doubt, contact the Enerpower Technical ...





Contact Us

For catalog requests, pricing, or partnerships, please visit:

<https://www.firmaskrzypek.pl>

Phone: +48 22 426 71 90

Email: info@firmaskrzypek.pl

Scan the QR code to access our WhatsApp.

