



Canberra lithium iron phosphate battery energy storage cabinet





Canberra lithium iron phosphate battery energy storage cabinet



[The Big Canberra Battery , Williamsdale Energy Storage System ...](#)

The Big Canberra Battery will play a crucial role in managing peak electricity use demand and in supporting the ACT's transition to a more sustainable energy future.

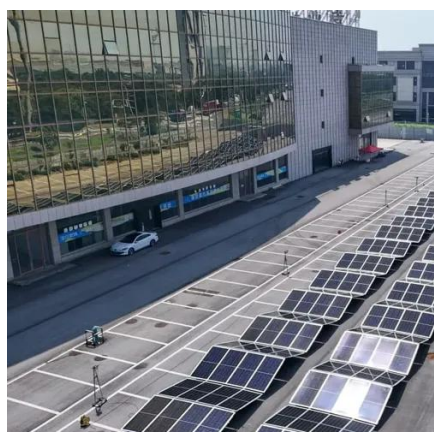
[Canberra Grid Energy Storage Power Station Project: Powering a](#)

Summary: Explore how the Canberra Grid Energy Storage Power Station Project addresses renewable energy challenges in Australia. Discover innovative battery storage solutions, market trends, and ...



500kW / 1000kWh Containerized Energy Storage System

Plug-and-play container design allows for easy installation with minimal on-site labor. Features LiFePO4 batteries, a safe, reliable, and long-life energy source. Simple expansion by connecting multiple units ...



Big Canberra Battery - Williamsdale BESS

The large-scale battery storage system will deliver 250 megawatts (MW) of power, store renewable energy and support grid reliability. Enough energy to power one-third of Canberra for two ...



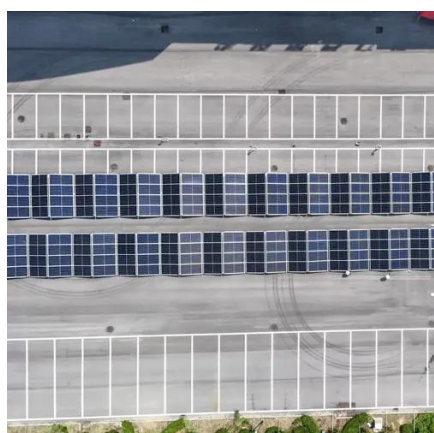
[Lithium Iron Phosphate \(LFP\) Battery Energy Storage: Deep Dive ...](#)

Lithium Iron Phosphate (LiFePO₄, LFP) batteries, with their triple advantages of enhanced safety, extended cycle life, and lower costs, are displacing traditional ternary lithium ...



Microgrids and Community Batteries

Community battery deployments in the Australian Capital Territory are primarily utilizing lithium iron phosphate (LiFePO₄) chemistry due to its superior thermal stability and cycling ...



[LiFePO₄ Batteries Canberra , Lithium Batteries for Solar & RVs](#)

Looking for high-performance, long-lasting LiFePO₄ (Lithium) batteries in Canberra? Prishda Energy proudly supplies premium lithium iron phosphate (LiFePO₄) batteries designed to meet Canberra's ...

Big Canberra Battery



The large-scale battery storage system in Williamsdale will deliver 250 megawatts (MW) of power, store renewable energy and support grid reliability. This is enough energy to power one-third of Canberra ...

Outdoor Cabinet BESS
50 kWh/500 kWh Battery Storage System
Industrial and Commercial Energy Storage

- All in One**
Integrating battery packs
- High-capacity**
50-500kWh
- Degree of Protection**
IP54
- Operating Temperature Range**
-20-60°C (Derating above 50 °C)
- Intelligent Integration**
integrated photovoltaic storage cabinet
- Rated AC Power**
50-100kW
- Altitude**
3000m(>3000m derating)



Significant milestone for the Big Canberra Battery

The BESS will cost between \$300 and \$400 million and will be developed, built, and operated by Eku Energy. Construction will start in late 2024 with completion expected in 2025.

Lithium batteries and an electrified Canberra

Rewiring Canberra and integrating large scale battery storage will significantly increase the power stability and reliability by reducing the impact of renewable energy intermittency and reducing grid ...





Contact Us

For catalog requests, pricing, or partnerships, please visit:

<https://www.firmaskrzypek.pl>

Phone: +48 22 426 71 90

Email: info@firmaskrzypek.pl

Scan the QR code to access our WhatsApp.

