



Clamp-fixed photovoltaic panel installation specifications





Overview

This installation manual describes proper installation procedures and provides necessary standards required for product reliability. Warranty details are available on [www. SOLARMOUNT®](http://www.SOLARMOUNT®) is the trusted rail-based racking system for residential and commercial solar installs. Built for lasting performance and proven in the field, it offers flexible design options, reliable structural strength, and a clean finished look. Please keep this manual safe for future reference. Environmental Protection Agency (EPA) to assist builders in designing and constructing homes equipped with a set of features that make the installation of solar energy systems after the completion of the home's. Photovoltaic panel clamp pulling specifications and standards How far should a clamp be connected to a PV module?

Clamps should be connected to the module between 300 and 400 mm from the edge of the module. The Role of the Mid Clamp: Securing the Array's Core 1. *Note: The above-des ribed.



Clamp-fixed photovoltaic panel installation specifications

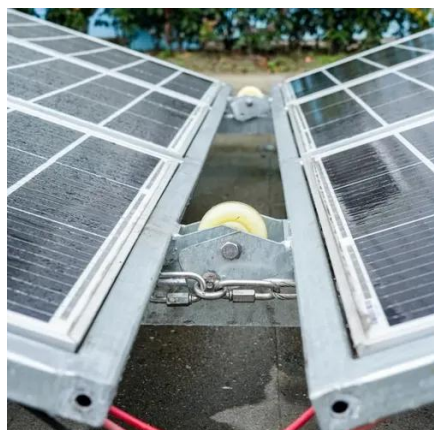


[Solar Panel Mounting Clamps: The Ultimate Guide , Ziyuan Solar](#)

Discover everything about solar panel mounting clamps in our expert guide. Learn the difference between mid and end clamps, material selection, torque specs, and installation best practices.

[Fixed Photovoltaic Panel Square Clamp Installation: The Ultimate ...](#)

That's what installing fixed photovoltaic panel square clamp installation feels like when you skip proper hardware. These unassuming metal pieces are the unsung heroes holding solar farms together - ...



INSTALLATION MANUAL V2 22.05.2019.cdr

Please carefully read through this installation manual before you begin installation, operation or maintenance work. Failure to follow these installation instructions may result in damage ...

[Photovoltaic panel clamp pulling specifications and standards](#)

What is UL Standard 1703 for photovoltaic modules & panels? An addendum to UL Standard 1703 "Flat Plate Photovoltaic Modules and Panels" recommends metal combinations not exceed an ...



[USVI-RA5 Rooftop Solar Panel Attachment: Design, Installation, ...](#)

These PV panels were attached directly to the standing seam ribs with panel clamps that were attached to external seam clamps (yellow arrow). Note that several panels in the foreground were damaged ...



[Ultimate Guide to Solar Panel Clamps: Types, Installation & Benefits](#)

Discover everything you need to know about solar panel clamps including end clamps, mid clamps, aluminum clamps, and solar earth clamps. Learn how to choose, install, and maintain the right ...



[Solar Photovoltaic: SPECIFICATION, CHECKLIST AND GUIDE](#)

By following the specification, a builder should feel confident that the proposed array location on a home, built to the RERH specification, will provide a suitable installation environment for a fully operational ...



[Solar Photovoltaic: SPECIFICATION,](#)



CHECKLIST AND GUIDE

About the Renewable Energy Ready Home Specifications Assumptions of the RERH Solar Photovoltaic Specification Builder and Specification Limitations 1.5 Document the solar resource potential at the designated array location 3.3 Install a conduit for the AC wire run from the designated inverter location to the electric service panel 4.2 Record the name and Web address of the electric utility service provider 5.1 Landscape Plan 5.2 Placement of non-array roof penetrations and structural building elements Appendix A: RERH Labeling Guidance The Renewable Energy Ready Home (RERH) specifications were developed by the U.S. Environmental Protection Agency (EPA) to assist builders in designing and constructing homes equipped with a set of features that make the installation of solar energy systems after the completion of the home's construction easier and less expensive. The specifications See more on [PDF]



Photovoltaic panel clamp pulling specifications and standards

What is UL Standard 1703 for photovoltaic modules & panels? An addendum to UL Standard 1703 "Flat Plate Photovoltaic Modules and Panels" recommends metal combinations not exceed an ...



Ground Mount Structure Installation Manual

The Solar Foundations Ground Mount Structure (Rack Mounting System) conforms to UL 2703 Standard for Safety First Edition: Mounting Systems, Mounting Devices, and Ground Lugs for Use with Flat ...

Photovoltaic panel center column clamp installation specifications

ASCE 7 Guidelines. The American Society of Civil



Engineers (ASCE) provides guidelines for the structural design of solar panel installations through their publication, ASCE



SOLARMOUNT®

It provides a variety of clamp options tailored to your project, along with a broad assortment of attachments, two rail profiles, and compliance with the UL 2730 standard.



Contact Us

For catalog requests, pricing, or partnerships, please visit:

<https://www.firmaskrzypek.pl>

Phone: +48 22 426 71 90

Email: info@firmaskrzypek.pl

Scan the QR code to access our WhatsApp.

