



# Common communication base station wind power composition





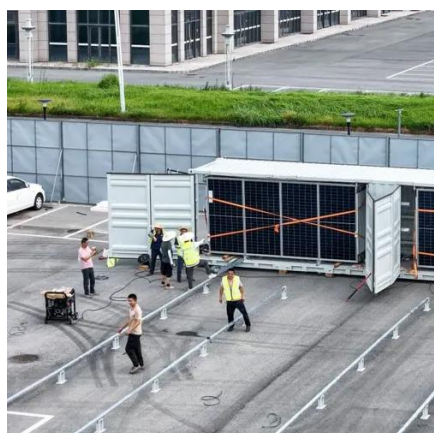
## Overview

---

The wind-solar-diesel hybrid power supply system of the communication base station is composed of a wind turbine, a solar cell module, an integrated controller for hybrid energy. The wind-solar-diesel hybrid power supply system of the communication base station is composed of a wind turbine, a solar cell module, an integrated controller for hybrid energy. The presentation will give attention to the requirements on using windenergy as an energy source for powering mobile phone base stations. 5G Communication Base Stations Participating in Demand. 5G base stations (BSs), which are the essential parts of the 5G network, are important user-side. This paper establishes a capacity optimization configuration model for such integrated system and introduces a hybrid solution methodology combining random scenario analysis, Nondominated Sorting Genetic Algorithm II (NSGA-II), and Generalized Power Mean (GPM). Typical scenarios are solved using. Worldwide thousands of base stations provide relaying mobile phone signals. The new energy power supply system through technical innovation not only overcomes the defects of the wind and light power generation, but also achieves the best effect for unmanned. What are the basic parameters of a.



## Common communication base station wind power composition



### Communication base station wind power 370

Abstract--Ensuring reliable and low-latency communication in offshore wind farms is critical for efficient monitoring and control, yet remains challenging due to the harsh environment and

### CN111836120A

A communication base station, comprising: the omnidirectional antenna is fixedly arranged on the wind driven generator and is electrically connected with an internal circuit of the wind



### Setting principles of wind and solar complementary ...

The wind-solar-diesel hybrid power supply system of the communication base station is composed of a wind turbine, a solar cell module, an integrated controller for hybrid energy

### Communication base stations have a lot of wind power

Our study introduces a communications and power coordination planning (CPCP) model that encompasses both distributed energy resources and base stations to improve communication



### Research on Capacity Optimization Configuration of Wind/PV

An individual base station with wind/photovoltaic (PV)/storage system exhibits limited scalability, resulting in poor economy and reliability. To address this, a collaborative power supply ...

### Textbook Communication Base Station Wind Power Structure

Overview Can wind energy be used to power mobile phone base stations? Worldwide thousands of base stations provide relaying mobile phone signals. Every off-grid base station has a diesel ...



### Common communication base station wind power composition

The wind-solar-diesel hybrid power supply system of the communication base station is composed of a wind turbine, a solar cell module, an integrated controller for hybrid energy



### Communication base station wind power



## access network

Figure 1 illustrates the equipment composition of a typical 5G communication base station, which mainly consists of 2 aspects: a communication unit and a power supply unit.



## The wind power consumption of communication base stations ...

Our study introduces a communications and power coordination planning (CPCP) model that encompasses both distributed energy resources and base stations to improve communication quality ...

## Wind power construction of communication base stations

We investigate the use of wind turbine-mounted base stations (WTBSs) as a cost-effective solution for regions with high wind energy potential, since it could replace or even outperform





## Contact Us

---

For catalog requests, pricing, or partnerships, please visit:

<https://www.firmaskrzypek.pl>

Phone: +48 22 426 71 90

Email: [info@firmaskrzypek.pl](mailto:info@firmaskrzypek.pl)

Scan the QR code to access our WhatsApp.

