



# Communication base station battery off





## Overview

---

This article will explore in detail how to secure backup power for telecom base stations, discussing the components involved, advanced technologies, best practices, and future trends to ensure continuous operation and resilience in the face of disruptions. In modern power infrastructure discussions, communication batteries primarily refer to battery systems that ensure uninterrupted power in telecom base stations and network facilities, rather than consumer or handheld communication devices. By defining the term in this way, operators can focus on. In the communication power supply field, base station interruptions may occur due to sudden natural disasters or unstable power supplies. These batteries store energy, support load balancing, and enhance the resilience of communication infrastructure. Understanding how these systems operate is. When natural disasters cut off power grids, when extreme weather threatens power supply safety, our communication backup power system with intelligent charge/discharge management and military-grade protection becomes the "second lifeline" for base station equipment. Telecom base stations are often installed.



## Communication base station battery off

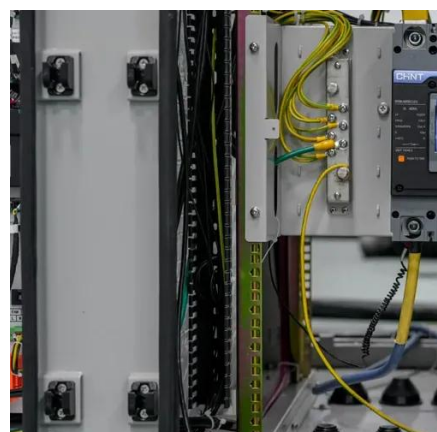


### [Disconnect the battery of the communication base station](#)

As the battery charge gradually decreases and the battery voltage drops to 42V, the comparator outputs a low level, the relay opens, disconnecting the battery from the base station equipment.

## What Powers Telecom Base Stations During Outages?

Telecom batteries for base stations are backup power systems using valve-regulated lead-acid (VRLA) or lithium-ion batteries. They ensure uninterrupted connectivity during grid failures ...



### [Optimization of Communication Base Station Battery Configuration](#)

In the communication power supply field, base station interruptions may occur due to sudden natural disasters or unstable power supplies. This work studies the optimization of battery ...

### [How Communication Base Station Energy Storage Lithium Battery ...](#)

Remote cellular towers in rural areas rely on lithium batteries for off-grid power, ensuring connectivity without grid dependence.



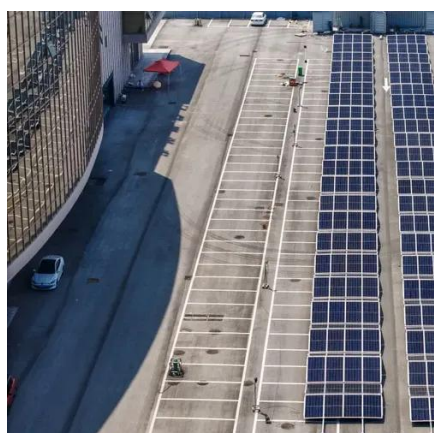
## Communication Batteries: Why Telecom Base Stations Have Unique ...

The phrase "communication batteries" is often applied broadly, sometimes including handheld radios, emergency devices, or general-purpose backup batteries. In practice, when ...



## Understanding Backup Battery Requirements for Telecom Base Stations

Telecom base stations require reliable backup power to ensure uninterrupted communication services. Selecting the right backup battery is crucial for network stability and efficiency.



## Securing Backup Power for Telecom Base Stations - legend

To secure backup power for telecom base stations, operators must adopt a multi-faceted approach that covers system design, installation, maintenance, and security.

## Telecom Base Station Backup Power



## [Solution: Design Guide for 48V ...](#)

Discover the 48V 100Ah LiFePO4 battery pack for telecom base stations: safe, long-lasting, and eco-friendly. Optimize reliability with our design guide.



## **Communication Base Station Backup Battery**

High-capacity energy storage solutions, specifically designed for communication base stations and weather stations, with strong weather resistance to ensure continuous operation of equipment in ...

## [Energy Storage in Telecom Base Stations: Innovations & Trends](#)

Energy storage is no longer just a backup power source for communication base stations; it's a strategic asset enabling greater resilience, cost efficiency, and environmental responsibility.





## Contact Us

---

For catalog requests, pricing, or partnerships, please visit:

<https://www.firmaskrzypek.pl>

Phone: +48 22 426 71 90

Email: [info@firmaskrzypek.pl](mailto:info@firmaskrzypek.pl)

Scan the QR code to access our WhatsApp.

