



# Communication base station wind power is built in the basement





## Overview

---

We investigate the use of wind turbine-mounted base stations (WTBSs) as a cost-effective solution for regions with high wind energy potential, since it could replace or even outperform. The wind-solar-diesel hybrid power supply system of the communication base station is composed of a wind turbine, a solar cell module, an integrated controller for hybrid energy. The presentation will give attention to the requirements on using. Abstract: Due to dramatic increase in power. Hybrid energy solutions enable telecom base stations to run primarily on renewable energy sources, like solar and wind, with the diesel generator as a last resort. This reduces emissions, aligns with sustainability goals, and even opens up opportunities for carbon credits or green. If all of the channel capacity of a BS is occupied, a user cannot access this BS and must instead access another BS that is farther away.



## Communication base station wind power is built in the basement



### [Textbook Communication Base Station Wind Power Structure](#)

Overview Can wind energy be used to power mobile phone base stations? Worldwide thousands of base stations provide relaying mobile phone signals. Every off-grid base station has a diesel ...

### New base station for wind power communication

Our study introduces a communications and power coordination planning (CPCP) model that encompasses both distributed energy resources and base stations to improve communication quality ...



### [How to build wind power stations for communication base stations](#)

The presentation will give attention to the requirements on using windenergy as an energy source for powering mobile phone base stations. How do wind power stations work? Wind power stations use ...

### [Why are wind turbines used for communication base stations built ...](#)

This article explores how small wind turbines for remote telecom towers are revolutionizing energy solutions, highlighting their benefits and practical applications.



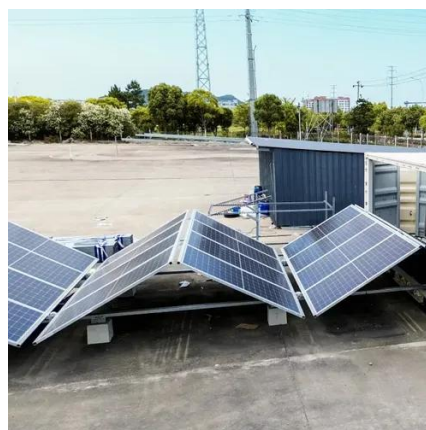
### Communication base station wind power is built in the basement

(A) The low-carbon base station consists of a power converter, power grid, photovoltaic, energy storage battery, and base station. The low-carbon base station system maintains communication with the ...



### The connection between communication base station and wind ...

Discover how hybrid energy systems, combining solar, wind, and battery storage, are transforming telecom base station power, reducing costs, and boosting sustainability.



### The role of wind power systems communication base stations

sands of base stations provide relaying mobile phone signals. Every off-grid base station has a diesel generator up to 4 kW to provide electricity for the electronic equipment involved. The presentation ...



### Wind power construction of



## communication base stations

We investigate the use of wind turbine-mounted base stations (WTBSs) as a cost-effective solution for regions with high wind energy potential, since it could replace or even outperform



## **Indoor base station wind power communication**

A sharp decrease in power consumption in a base station makes it possible to replace the traditional electrical power supply with solar or wind energy. Among other solutions, solar and hybrid solar-wind ...

## The wind power consumption of communication base stations ...

Our study introduces a communications and power coordination planning (CPCP) model that encompasses both distributed energy resources and base stations to improve communication quality ...





## Contact Us

---

For catalog requests, pricing, or partnerships, please visit:

<https://www.firmaskrzypek.pl>

Phone: +48 22 426 71 90

Email: [info@firmaskrzypek.pl](mailto:info@firmaskrzypek.pl)

Scan the QR code to access our WhatsApp.

