



# Communication high voltage tower communication base station





## Overview

---

Equipped with an electromagnetic wave antenna, often placed on a tall mast, the base station enables communication between mobile terminals (such as mobile phones or pagers) and the fixed part of the digital telecommunications network. Although the layout of power poles and towers is uniform and symmetrical, the electromagnetic field radiated to the outside world is asymmetric. Many of these sites operate far from conventional grids, making traditional power methods costly and environmentally impactful. This article provides a detailed. Check out the detailed specs in Satel USA's High Power Mobile Base Stations Kit for a deeper dive. Base stations typically have a transceiver, capable of sending and receiving signals.

**Transmission Tower Definition:** A transmission tower is defined as a tall structure used to support overhead power lines, transporting high-voltage electricity from generating stations to substations.



## Communication high voltage tower communication base station

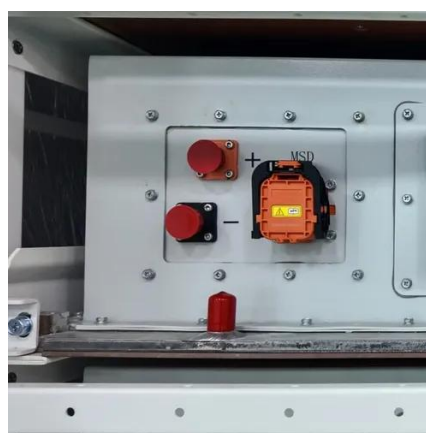


### [Transmission Towers: Types, Design & Parts , Electrical4U](#)

Transmission Tower Definition: A transmission tower is defined as a tall structure used to support overhead power lines, transporting high-voltage electricity from generating stations to ...

### [Base Stations and Cell Towers: The Pillars of Mobile Connectivity](#)

Base stations use antennas mounted on cell towers to send and receive radio signals to and from mobile devices within their coverage area. This communication enables users to make ...



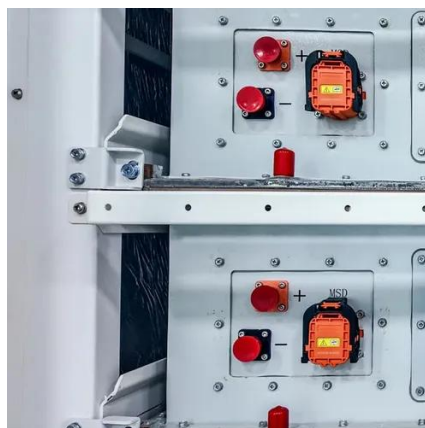
### [The Base Station in Wireless Communications: The Key to Modern](#)

Equipped with an electromagnetic wave antenna, often placed on a tall mast, the base station enables communication between mobile terminals (such as mobile phones or pagers) and the ...



## What is Telecommunication Base Station , China Hop

At the top of the tower, there is a circle of rectangular plate-like things shining brightly, which is the antenna. Antennas are used for transmitting and receiving signals.



## What You Should Know About High Power Base Stations

High Power Mobile Base Stations are advanced wireless communication systems designed to handle the rugged demands of construction sites. Offering robust signals, expansive ...

## Analysis of Electromagnetic Radiation of Mobile Base Stations Co

This paper presents the analysis of electromagnetic radiation of mobile base stations co-located with high-voltage transmission towers.

114KWh ESS



ISO 9001 ISO 14001 PICC RoHS CE MSDS UN38.3 UK IEC

## Electric field characteristics of shared towers and electric field

The demand for communication base stations in the 5G era has increased dramatically, the current large-scale transmission towers are important carrier for 5G equipment sharing construction.



## Base Stations



Like a normal base station, it connects the phone's voice and data to the cell network but covers a smaller scale (home). The advantage of using a femto-base station is that it frees up cell ...



### [Research on Electromagnetic Radiation Evaluation Methods for ...](#)

In order to clarify the electromagnetic radiation effects of mobile base stations installed on high-voltage transmission towers on electric power transportation

### **Telecom Towers and Remote Base Stations**

Discover comprehensive insights into powering telecom towers and remote base stations with off-grid solar and energy storage solutions. Explore LiFePO4 batteries, system design, and ...





## Contact Us

---

For catalog requests, pricing, or partnerships, please visit:

<https://www.firmaskrzypek.pl>

Phone: +48 22 426 71 90

Email: [info@firmaskrzypek.pl](mailto:info@firmaskrzypek.pl)

Scan the QR code to access our WhatsApp.

