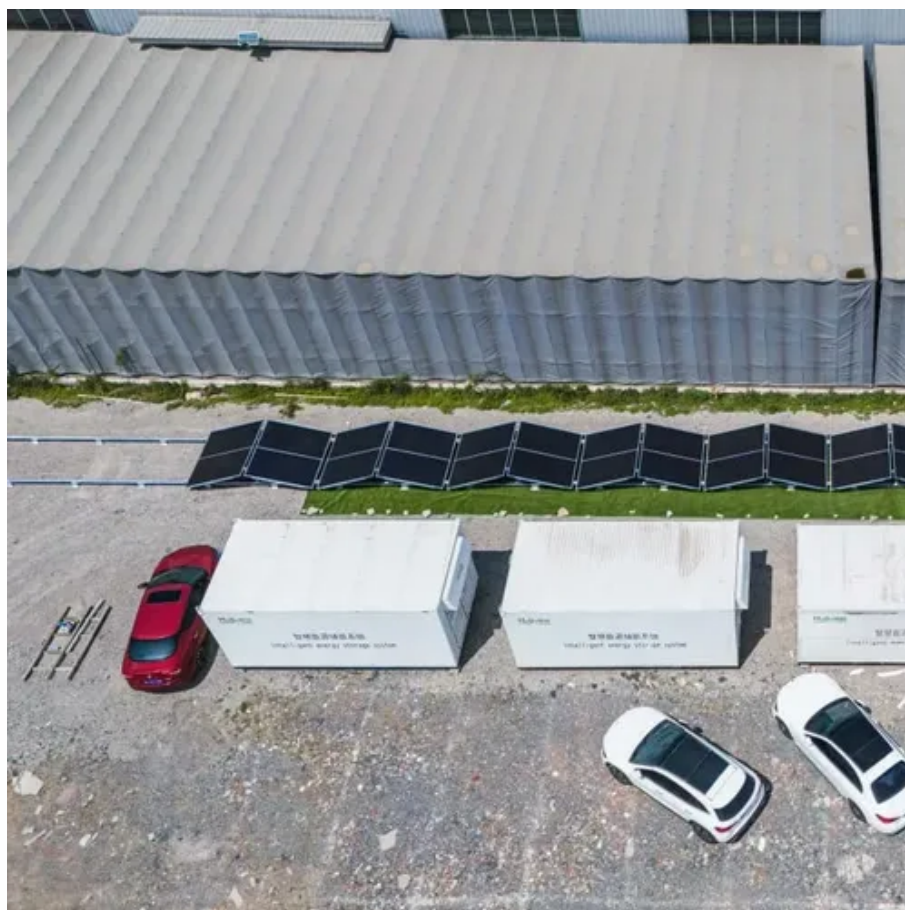




Container outdoor power supply can no longer charge





Overview

When to Seek Help: If no output persists with enabled ports, sufficient charge, and verified cables/devices, suspect an inverter or port failure. Symptoms: AC output shuts off, "OVERLOAD" or "OCP" error appears, or an alarm sounds. Causes: Devices Exceed Continuous Wattage. "A 2023 study by Renewable Energy World found that 42% of outdoor power station failures could be resolved through simple user maintenance. " Before calling professionals, attempt these solutions: If basic troubleshooting fails, it might be time to consult experts. Companies like EK SOLAR specialize. Is your portable power station stuck at 99% and won't go up to that rewarding 100%?

It's a very common problem that can make you wonder if your investment is broken. Know this before you get scared: this isn't always a sign of a big problem. By the. Charge Level: Check the battery's charge level.



Container outdoor power supply can no longer charge



Outdoor Power Outlet is Not Working: Quick Fixes

Outdoor Power Outlet is Not Working? Learn step-by-step methods to test voltage, reset GFCI, and fix wiring for full power.

Power Station Not Charging to 100%? Here's the Fix

One of the main jobs of the Battery Management System is to keep the battery from being overcharged. Even if the display on your power station says 100%, the real charge level may ...



[Troubleshooting Common Portable Power Station Issues: A Practical ...](#)

A comprehensive guide to diagnosing and resolving common portable power station issues, from not turning on to solar charging failures, ensuring minimal downtime and maximum device lifespan.

[How to troubleshoot an outdoor mobile power supply that doesn't work](#)

Troubleshooting an outdoor mobile power supply that doesn't work requires a systematic approach. By checking the basics, examining the battery, testing the output ports, ensuring proper ventilation, and ...



[10 Portable Power Station Issues & Easy Fixes That Work](#)

For troubleshooting portable power station, you need to first understand what you're working with. Here are the core components you'll find in a portable power station. 1. Lithium Battery (Power Core) Most ...

[Power Station Failures: Simple Fixes for Common Off-Grid Problems](#)

Most problems are solved by simply restarting the unit or moving it. We'll walk through the most common problems and the easiest fixes. You may wish to start with The Ultimate Guide to Off-Grid Power for ...

INTEGRATED DESIGN
EASY TO TRANSPORT AND INSTALL,
FLEXIBLE DEPLOYMENT



Why Is My Portable Power Station Not Charging

When your portable power station refuses to charge, a systematic approach can help identify and resolve the issue efficiently. Follow these detailed steps to diagnose and fix the problem, ...

[Portable Power Station Troubleshooting:](#)



[Common Issues and Fixes](#)

Symptoms: Your power station isn't topping up at the expected rate--or not at all--via AC charger, solar panels, or car adapter. Possible Causes & Fixes: Incorrect Input Source: Different ...



[Why Your Outdoor Power Supply Fails to Start & How to Fix It](#)

Summary: Discover why outdoor power supplies drain unexpectedly and learn practical solutions to prevent startup failures. This guide covers common issues in portable generators, solar backups, ...

[Why Is My Outdoor Power Supply Not Charging? Troubleshooting ...](#)

Understanding why your outdoor power supply isn't charging empowers you to make informed decisions. Whether it's a simple cable replacement or professional servicing, timely action ensures ...





Contact Us

For catalog requests, pricing, or partnerships, please visit:

<https://www.firmaskrzypek.pl>

Phone: +48 22 426 71 90

Email: info@firmaskrzypek.pl

Scan the QR code to access our WhatsApp.

