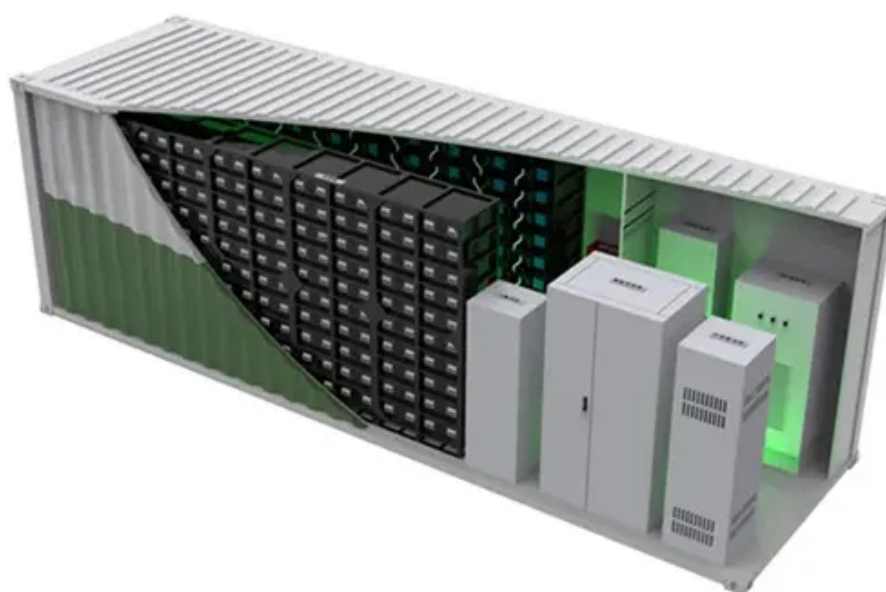




Deciphering the principle of wind power generation





Overview

Wind turbines work on a simple principle: instead of using electricity to make wind—like a fan—wind turbines use wind to make electricity. Wind is a form of solar energy caused by a. Harvesting wind power isn't exactly a new idea - sailing ships, wind-mills, wind-pumps 1st Wind Energy Systems - Ancient Civilization in the Near East / Persia - Vertical-Axis Wind-Mill: sails connected to a vertical shaft connected to a grinding stone for milling Wind in the Middle Ages - P t Mill. Wind Turbine Definition: A wind turbine is defined as a device that converts wind energy into electrical energy using large blades connected to a generator. Working Principle of Wind Turbine: The turbine blades rotate when wind strikes them, and this rotation is converted into electrical energy. Working principle of a horizontal axis wind turbine. A gearbox is used in a connection between a low speed rotor and the generator. The generator transforms mechanical. This course was adapted from the Department of Energy website, Office of Energy Efficiency and Renewable Energy: <https://www.gov/eere/wind/how-wind-turbine-works-text-version>.



Deciphering the principle of wind power generation



How Do Wind Turbines Work?

Wind turbines capture wind power through their blades. The blades rotate when pushed by the wind, driving the rotor to turn. This rotation drives the generator to produce electricity. The ...

Wind Power Generation , Springer Nature Link

The principle of wind power generation involves taking the kinetic energy of the wind to drive the rotation of wind turbine blades, which is then accelerated by a gearbox to enable a ...

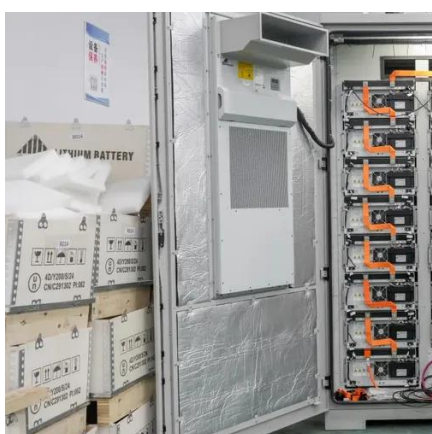


Working Principle of Wind Turbine

Working Principle of Wind Turbine: The turbine blades rotate when wind strikes them, and this rotation is converted into electrical energy through a connected generator.

How Do Wind Turbines Work?

This video highlights the basic principles at work in wind turbines and illustrates how the various components work to capture and convert wind energy to electricity.



[How Does Wind Energy Work: Complete Guide To Wind Power 2025](#)

Learn how wind energy works with our comprehensive guide covering wind turbine technology, energy conversion, and renewable power generation. Updated 2025.

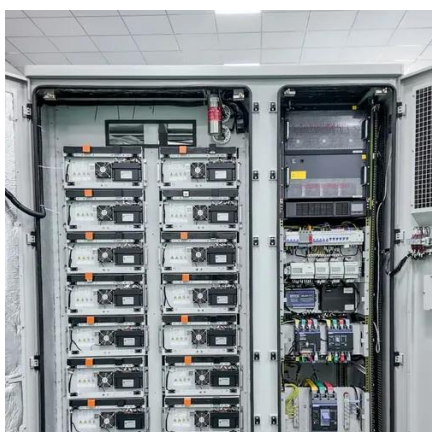
Wind Turbine and its Working Principle

In a wind power plant, the kinetic energy of the flowing air mass is transformed into mechanical energy of the blades of the rotor. A gearbox is used in a connection between a low speed rotor and the ...



[How Wind Energy Works: The Science Behind Wind Power Generation](#)

The fundamental principle behind wind energy generation lies in the conversion of kinetic energy--the energy possessed by objects in motion. Wind turbines serve as the pivotal apparatus in ...



Wind Power



Fundamentals

Harvesting wind power isn't exactly a new idea - sailing ships, wind-mills, wind-pumps. 1st Wind Energy Systems. - Ancient Civilization in the Near East / Persia - Vertical-Axis Wind-Mill: ...



How a Wind Turbine Works

Wind turbines work on a simple principle: instead of using electricity to make wind--like a fan-- wind turbines use wind to make electricity. Wind turns the propeller-like blades of a turbine around a rotor, ...

How a Wind Turbine Works

Wind turbines harness the wind--a clean, free, and widely available renewable energy source--to generate electric power. This page offers a text version of the interactive animation: How a Wind

...





Contact Us

For catalog requests, pricing, or partnerships, please visit:

<https://www.firmaskrzypek.pl>

Phone: +48 22 426 71 90

Email: info@firmaskrzypek.pl

Scan the QR code to access our WhatsApp.

