



# Design principles for photovoltaic walkway panels





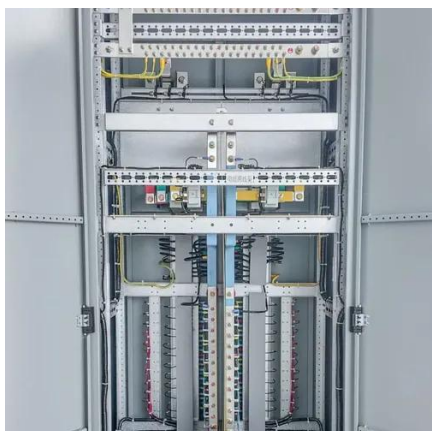
## Overview

---

This article explains the key design principles illustrated in the rooftop PV row-spacing and walkway layout. South-Facing Orientation for Maximum Energy Yield For installations in the northern hemisphere, south-facing module orientation ensures optimal solar exposure throughout. Proper module orientation and row spacing are fundamental to the performance, safety, and maintainability of rooftop solar PV systems. Beyond maximizing energy yield, an optimized layout reduces wind loads, improves airflow, and ensures long-term operational access. In most cases, this is with roof-mounted ballasted systems, though other strategies will also be considered. PV arrays must be mounted on a. However, to maximize the benefits of solar energy, designing an efficient and code-compliant solar photovoltaic (PV) system is critical.



## Design principles for photovoltaic walkway panels

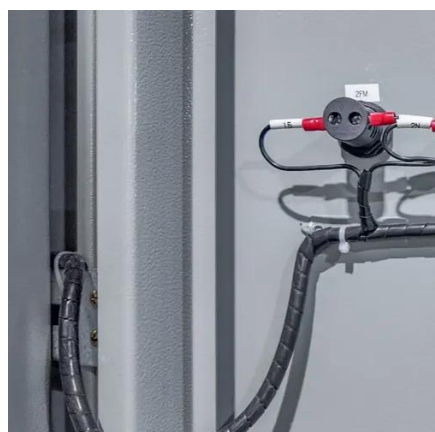


### **WALKWAY COMPLETE BROCHURE**

A Solar Walkway is a structured pathway designed to provide a safe, stable, and durable walking surface for technicians and maintenance personnel working around solar panel systems.

### [Understanding Solar Rooftop Walkways: A Guide to Safety and ...](#)

Walkways create a defined path, reducing the risk of slips, trips, and falls while minimizing the likelihood of accidental damage to the solar panels. They are typically made from durable materials that can ...



### [How to Design a Solar PV System: A Comprehensive Guide](#)

Designing a solar PV system involves more than just placing panels on a roof. This comprehensive guide walks you through each critical step--site assessment, load analysis, ...

### [PV Walkway Board for Solar Projects - Durable, Safe & Lightweight](#)

Modern PV walkway systems are designed in compliance with international safety and building codes, often featuring fire-retardant and anti-slip properties. FRP walkways, in particular, ...



## Solar PV Guidline

Provide guidance to designers and installers of our PV projects. It outlines the key attributes of, and expectations for, PV systems on APS projects. It is the District's intent to incorporate solar power ...

## saas-fee-azurit

What are the design criteria for a grid connect PV system? The actual design criteria could include: specifying a specific size (in kWp) for an array; available budget; available roof space; wanting to ...



## Solar Photovoltaic System Design Basics

Designing a solar PV system involves more than just placing panels on a roof. This comprehensive guide walks you through each critical step--site assessment, load analysis, ...

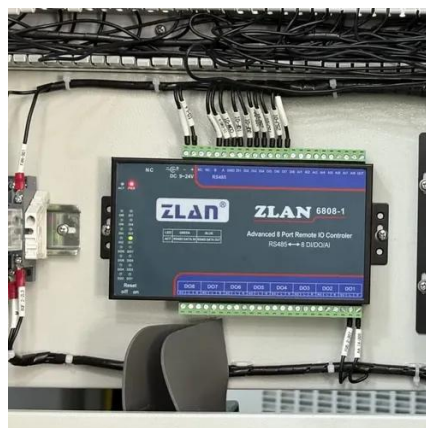


## [Rooftop photovoltaic walkway panel](#)



## [installation specifications](#)

CS504.2.2 (IBC 1510.7.4) Photovoltaic panels and modules. Rooftop-mounted photovoltaic panels and modules shall be listed and labeled in accordance with UL 1703 and shall be installed in accordance ...



## [The Importance of Walkways in Solar Panel Installations A Guide to ...](#)

Best Practices for Installing Walkways on Solar Roofs Plan the Layout: Before installation, plan the layout of the walkway to ensure safe access to all necessary panels. Walkways ...

## **Solar Photovoltaic System Design Basics**

PV arrays must be mounted on a stable, durable structure that can support the array and withstand wind, rain, hail, and corrosion over decades. These structures tilt the PV array at a fixed angle ...



## [Designing Rooftop Solar PV Layouts: Row Spacing, Walkways, and ...](#)

Beyond maximizing energy yield, an optimized layout reduces wind loads, improves airflow, and ensures long-term operational access. This article explains the key design principles ...



## Contact Us

---

For catalog requests, pricing, or partnerships, please visit:

<https://www.firmaskrzypek.pl>

Phone: +48 22 426 71 90

Email: [info@firmaskrzypek.pl](mailto:info@firmaskrzypek.pl)

Scan the QR code to access our WhatsApp.

