



Dimensions of photovoltaic panels for rooftop installation





Overview

Standard Residential Panels Optimize Space and Handling: The industry-standard 60-cell panel dimensions (65" × 39" × 1.5") aren't arbitrary – they represent the optimal balance between power output, installation ease, and roof space utilization. At 40-46 pounds, they can be safely handled by. In the design and installation of photovoltaic systems, calculating rooftop solar panel dimensions is a critical factor that determines the success of a project. Example: 5kW solar system is comprised of 50 100-watt solar panels. Can you put a 5kW solar system on your roof?

For. We will explore the common dimensions, explain how cell count dictates physical size, and provide actionable insights so you can accurately plan your installation, maximize roof space, and ensure you invest in the perfect system tailored to your unique energy needs. Readers Learn How Panel Size Impacts Energy.



Dimensions of photovoltaic panels for rooftop installation



[Solar Panel Size & Dimensions Guide 2025](#) [_Complete Specs](#)

Complete guide to solar panel sizes and dimensions. Compare 60-cell vs 72-cell panels, weights, roof space requirements, and installation specs for 2025.

Roof Solar Panel Size Guide for Homeowners

Most modern residential panels follow a few common size families: 60-cell, 72-cell, and large-format 120-144-cell modules used in high-output systems. 60-Cell Panels Are Compact; 72 ...



[Standard Solar Panel Sizes And Wattages](#) [\(100W-500W Dimensions\)](#)

Example: 5kW solar system is comprised of 50 100-watt solar panels. Alright, your roof square footage is 1000 sq ft. Can you put a 5kW solar system on your roof? For that, you will need to know what size is ...



[Perfect Solar Panel Sizes for Your Home](#) [\(Expert Sizing Guide\)](#)

Most residential solar panels measure between 65 to 75 inches long and 39 to 41 inches wide, delivering power outputs ranging from 250 to 400 watts per panel.



standard solar photovoltaic panel sizes explained

The standard residential solar photovoltaic panel size you'll see most often is based on a 60-cell configuration, typically measuring about 67 inches long by 40 inches wide. This size offers the ...

[Photovoltaic Roof Panel Specifications and Dimensions: A Complete ...](#)

Understanding photovoltaic (PV) roof panel specifications and dimensions is critical for optimizing energy output, cost efficiency, and structural compatibility. This guide breaks down key technical ...



[Solar Panel Size Guide: Find the Best Fit for Your Roof](#)

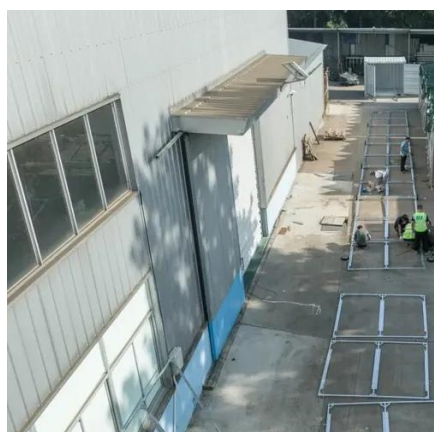
When it comes to solar, there isn't a one-size-fits-all solution. The standard solar panel size depends on how many solar cells it contains, and that choice plays a big role in both performance and roof fit.

Rooftop Solar Panel Size and Layout



Guide

This article, based on practical case studies and calculation formulas, analyzes solar panel dimensions, spacing, and rooftop assessment methods to help distributors and users select ...



[Understanding Solar Panel Dimensions In 2025: A Complete Size Guide](#)

Understanding solar panel dimensions is crucial for planning your solar system installation, maximizing efficiency, and ensuring compatibility with your available space. In this blog, ...

[Solar Panel Size Guide , Best Panel Size for Your Roof](#)

Learn how to choose the ideal solar panel size for your home. Get expert tips, standard dimensions, and a size chart to simplify your solar decisions.





Contact Us

For catalog requests, pricing, or partnerships, please visit:

<https://www.firmaskrzypek.pl>

Phone: +48 22 426 71 90

Email: info@firmaskrzypek.pl

Scan the QR code to access our WhatsApp.

