



Distance from the generator room to the exhaust shaft





Overview

Exhaust gases must be piped safely away from any room or enclosure that houses a generator and to a well ventilated area where people will not be endangered. Generator room air inlet and outlet shaft spac velocities and a louver free area of 50% is used. Total required intake/exhaust areas are presented for the number of active generators and transformers. When ever possible, face the generator. Like ICE-powered automobiles, ICE electrical generator systems have radiators and exhaust systems that reject heat. The cooling system on an ICE electrical generator typically comprises a water-circuit radiator to cool the engine block and may also include radiators for oil cooling as well as. In this article, we'll break down how generator exhaust systems work, common design challenges, material choices, code considerations (especially for through-wall exhaust setups), and what to expect during installation. Generator must have adequate air flow. A good rule of thumb is 5 feet,although.



Distance from the generator room to the exhaust shaft

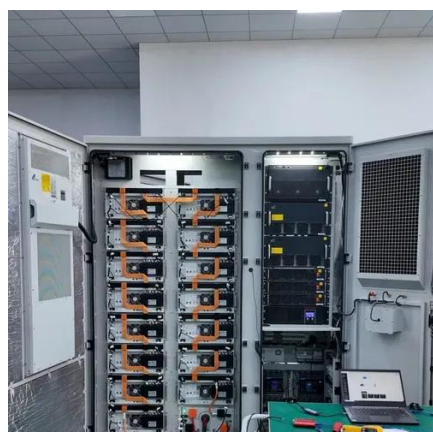


Generator room air inlet and outlet shaft spacing

What is the intake/exhaust area of a generator? velocities and a louver free area of 50% is used. Total required intake/exhaust areas are presented for the number of active generators and transformers. ...

GENERIC GENERATOR INSTALLATION MANUAL

Generator engines give off deadly carbon monoxide gas through their exhaust systems. Carbon monoxide gas, if breathed in sufficient concentrations, can cause unconsciousness or death. Exhaust ...



[Design of Air Inlet and Exhaust Route in Diesel Generator Room](#)

In order to prevent the backflow of hot air, the air inlet of the unit should be as far away from the air outlet as possible, and the air in the machine room should be as direct as possible. The ...

[What to Know Before Installing a Commercial Generator Exhaust System](#)

Designing a generator exhaust system is far more complex than attaching a pipe and pointing it outside. Each facility presents its own obstacles, whether it's tight mechanical rooms, rooftop



clearances, or ...



Diesel Generator Exhaust Pipe Installation Requirements

When more than one generator set is installed in the generator room, each should have an independent exhaust system. Because when more than one unit is running, exhaust gas entering ...

GENERIC GENERATOR INSTALLATION MANUAL

When possible, position liquid cooled engines with the engine end in line with the exhaust outlet per the manufacturer's recommendation. The reason for this recommendation is that the air moving through a ...



Generator room air inlet and exhaust parameters

Proper ventilation of the generator room is necessary to support the engine combustion process, reject the parasitic heat generated during operation (engine heat, alternator heat, etc.), and purge odors ...

Generator Enclosure Spacing



There are ten generator sets installed on the second floor of the building and seven generator sets on the ground floor directly below. There is a building located directly across from the discharge openings.



Generator air inlet and exhaust shaft spacing

Generator exhaust can enter a structure through large openings, such as windows and doors. However, exhaust and CO can also seep into the structure through smaller, less obvious ...



Contact Us

For catalog requests, pricing, or partnerships, please visit:

<https://www.firmaskrzypek.pl>

Phone: +48 22 426 71 90

Email: info@firmaskrzypek.pl

Scan the QR code to access our WhatsApp.

