



Do communication base stations consume electricity





Overview

The average 5G base station consumes 2.5-4 kW daily - equivalent to powering 40 refrigerators simultaneously. Three factors amplify this: Operators now spend 20-40% of OpEx on electricity, with cooling systems accounting for 30% of that load. Moreover, we know that 5G consumes a lot of power and generates a lot of heat. Do base stations dominate the energy consumption of the radio access network?

Furthermore, the base stations dominate the energy consumption of the radio access network.



Do communication base stations consume electricity



[Electricity consumption of communication network base stations](#)

Base stations represent the main contributor to the energy consumption of a mobile cellular network. Since traffic load in mobile networks significantly varies during a working or weekend day, it is ...

[Communication Base Station DC Energy Storage: Powering ...](#)

Have you ever wondered why communication base stations consume 60% more energy than commercial buildings? As 5G deployments accelerate globally, the DC energy storage systems ...



[Key Factors Affecting Power Consumption in Telecom Base Stations](#)

Discover the key factors influencing power consumption in telecom base stations. Optimize energy efficiency and reduce operational costs with our expert insights.



[Measurements and Modelling of Base Station Power Consumption ...](#)

Base stations represent the main contributor to the energy consumption of a mobile cellular network. Since traffic load in mobile networks significantly varies during a working or weekend day, it is ...



Electricity prices for communication base stations

Can low-carbon communication base stations improve local energy use? Therefore, low-carbon upgrades to communication base stations can effectively improve the economics of local energy use ...

The Importance of Renewable Energy for ...

Installations of telecommunications base stations necessary to address the surging demand for new services are traditionally powered by ...



Why does 5g base station consume so much power and how to ...

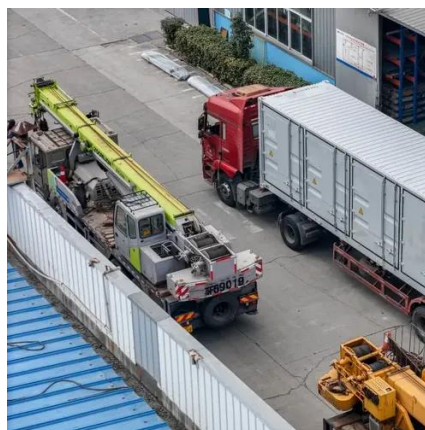
5G base stations use high power consumption and high RF signals, which require more signal processing for digital and electromechanical units, and also put greater pressure on AU ...

How much electricity does a



communication base station usually ...

A typical 5G base station consumes up to twice or more the power of a 4G base station, writes MTN. Have you ever wondered how much energy our hyper-connected world is consuming? 5G base ...



Energy-Efficient Base Stations , part of Green Communications

In order to effectively improve the energy efficiency of the future mobile networks, it is thus important to focus the attention on the Base Station.

The Importance of Renewable Energy for Telecommunications Base Stations

Installations of telecommunications base stations necessary to address the surging demand for new services are traditionally powered by conventional energy sources, which results in ...



Comparison of Power Consumption Models for 5G Cellular Network ...

The first step when modeling the energy consumption of wireless communication systems is to derive models of the power consumption for the main system components, which are then ...



Contact Us

For catalog requests, pricing, or partnerships, please visit:

<https://www.firmaskrzypek.pl>

Phone: +48 22 426 71 90

Email: info@firmaskrzypek.pl

Scan the QR code to access our WhatsApp.

