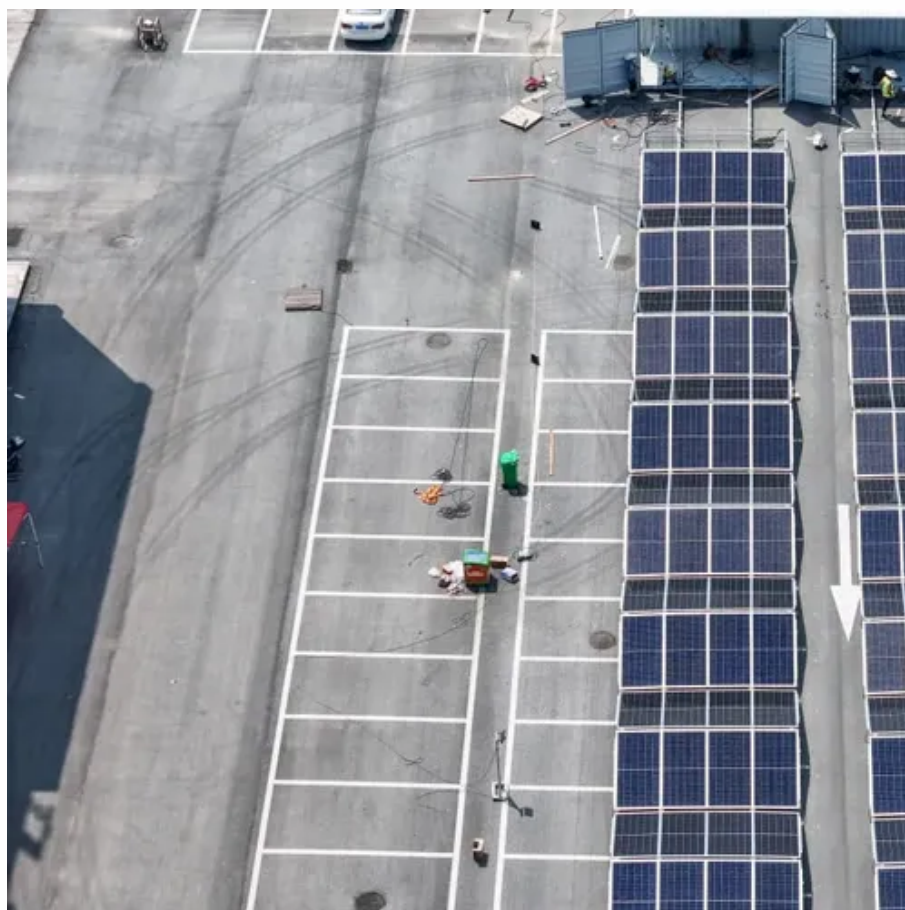




Do photovoltaic panels have a positive and negative side





Overview

Each panel has two primary terminals: the positive (+) and the negative (-) poles, which are crucial for creating a complete electrical circuit. Incorrect wiring can lead to wasted energy and additional costs, undermining the benefits of solar power. Tools for Identifying Poles, 4. Step-by-Step Guide to Identifying. How do you tell between the positive and negative terminal and what happens if you connect a solar panel the wrong way?

How Do You Tell The Positive And Negative Terminal Of A Solar Panel?

What Are The Different Solar Panel Connectors?

How Do You Install A Solar Panel Connector?

(Step by Step) What. It means that one side of the generator has positive charges, and the other has negative charges. This voltage difference allows electric current to flow through wires from one end to another, producing electricity! Here are some of the key points we'll cover: How do I fix reverse polarity?

Can. To identify a solar panel's polarity, check the MC4 connectors (male/female) or use a multimeter (DC voltage mode)—positive terminals show +V (e., +18V for a 20W panel), negative reads -V or zero.



Do photovoltaic panels have a positive and negative side



[Do Photovoltaic Panels Have Positive and Negative Wires? Let's ...](#)

The Bare Wires Truth: PV Panel Polarity Explained
Contrary to what some DIY solar videos might suggest, photovoltaic panels absolutely do have designated positive and negative terminals.

[How to make positive and negative poles of solar cells](#)

One of the easiest ways to identify the positive and negative terminals of a solar panel is to look for the markings on the back of the panel itself. Most panels will have a label or sticker that indicates which ...



Solar Panel Positive and Negative (Diode + Voltmeter)

In a typical solar panel configuration, the positive terminal is usually marked with a red wire or a "+" symbol, while the negative terminal is denoted ...

[How to identify positive and negative solar panel polarity](#)

If you connect the positive and negative terminals incorrectly, you'll face reduced efficiency, potential equipment damage, or even safety hazards. Let's break down the most reliable methods to identify ...



Solar Panel Positive and Negative (Diode + Voltmeter)

In this article, you will learn how to determine the positive and negative terminals of a solar panel. We will also show you how to check solar panel polarity, and how to connect a solar panel to a battery.

[How to distinguish positive and negative poles in photovoltaic panels](#)

Solar panels feature positive and negative terminals. Wiring solar panels in series means wiring the positive terminal of a module to the negative of the following, and so on for the whole string.



[Which Solar Panel Connector Is Positive? \(Types Listed\)](#)

How Do You Tell The Positive And Negative Terminal Of A Solar Panel? Most solar panels will have the polarities of the terminals labeled. If the polarities are not labeled, two methods ...



How to Check Solar Panel Polarity



(Reverses + Fixes)

Solar panels are polarized to generate more power during the day, but if your system is not set up correctly, you could be wasting valuable energy. Have you ever wondered what "polarity" ...

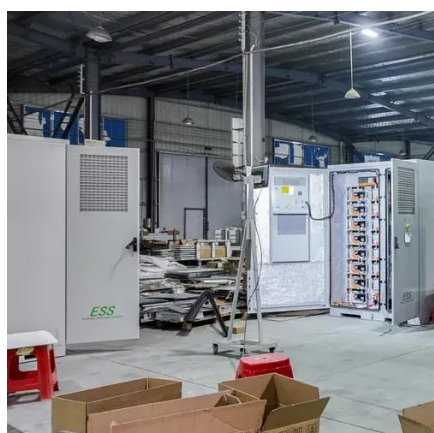


[How to identify the positive and negative poles of solar panels](#)

In a typical solar panel configuration, the positive terminal is usually marked with a red wire or a "+" symbol, while the negative terminal is denoted by a black wire or a "-" symbol.

[How do you know if a solar panel is positive or negative](#)

To identify a solar panel's polarity, check the MC4 connectors (male/female) or use a multimeter (DC voltage mode)--positive terminals show +V (e.g., +18V for a 20W panel), negative reads -V or zero.



[Identifying Positive and Negative Terminals on a Solar Panel](#)

In this article, we'll explore how to identify the positive and negative terminals of a solar panel, check solar panel polarity, and effectively connect a solar panel to a battery.



Contact Us

For catalog requests, pricing, or partnerships, please visit:

<https://www.firmaskrzypek.pl>

Phone: +48 22 426 71 90

Email: info@firmaskrzypek.pl

Scan the QR code to access our WhatsApp.

