



# Does Duodoma solar container lithium battery match the inverter





## Overview

---

When setting up solar energy systems or home energy storage, a common question arises: Are lithium batteries compatible with all inverters?

The short answer is no - proper inverter matching is crucial for optimal performance and safety. Matching a lithium solar battery with an inverter is a crucial step in setting up an efficient solar power system. Then you go to test it under a real load, and. click. - A 5 kW hybrid inverter typically pairs well with a 5-10 kWh battery. This guide explains compatibility factors, technical requirements, and practical tips to ensure seamless integration. Mistakes, however, can lead to reduced output, equipment damage, or safety.



## Does Duodoma solar container lithium battery match the inverter



### [How to match lithium battery with solar container inverter](#)

Integrating a solar inverter with a lithium battery can take your renewable energy setup to the next level. This combination allows for better energy storage, improved efficiency, and greater resilience during ...

### [How to Choose the Right Inverter for a Lithium Battery System](#)

Learn how to select the right inverter for lithium battery systems, covering LiFePO4 compatibility, sizing, safety, solar integration, and long-term performance use.



### [Can Lithium Batteries Work With Any Type of Inverter?](#)

The short answer is no - proper inverter matching is crucial for optimal performance and safety. Let's examine the key compatibility factors for lithium battery and LiFePO4 battery systems.



### [The Ultimate Guide to Matching Your Lithium Battery and Inverter](#)

Conclusion: With that battery, you can run a 2500W inverter with a healthy safety margin. Its high cycle life and incredibly flat voltage curve mean it's a solid foundation for a powerful system.



## [Are Hybrid Solar Inverters Compatible With All Battery Types?](#)

You just bought shiny solar panels and now plan to add batteries, but a big question pops up: will those batteries talk nicely with your hybrid solar inverters?

## [How to Pair Batteries with Inverters: A Complete Guide for Solar ...](#)

Summary: Pairing batteries with inverters is critical for optimizing solar energy storage. This guide explains compatibility factors, technical requirements, and practical tips to ensure seamless integration.



## [Battery and Inverter Sizing Guide 2025: How to Match Solar Storage](#)

Learn how to size and pair a battery with your solar inverter in 2025. Discover key ratios, examples, and Growatt solutions for optimal solar + storage system design.

## **Solar Inverter & Battery: Avoid DIY**



## Mistakes

Learn to connect solar inverters to LiFePO4 batteries correctly. Avoid common DIY errors like undersized cables and BMS mismatches for a safe, efficient system.

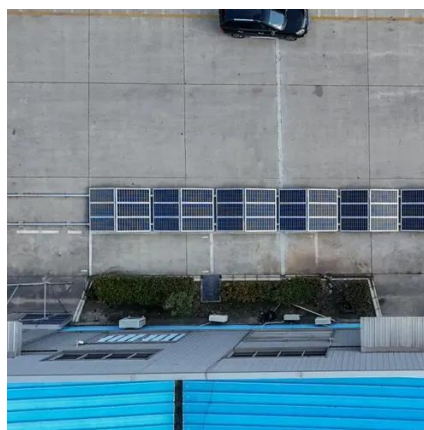


## Does Duodoma lithium battery match the inverter

Answer: To choose the right inverter for lithium batteries, match the inverter's voltage and capacity to your battery's specifications, prioritize pure sine wave inverters for

## [How do I match a lithium solar battery with an inverter?](#)

One of the most important factors when matching a lithium solar battery with an inverter is voltage compatibility. The voltage of the battery and the inverter must match. For example, if you ...





## Contact Us

---

For catalog requests, pricing, or partnerships, please visit:

<https://www.firmaskrzypek.pl>

Phone: +48 22 426 71 90

Email: [info@firmaskrzypek.pl](mailto:info@firmaskrzypek.pl)

Scan the QR code to access our WhatsApp.

