



Does the mobile base station have a backup power supply

20 ft container



40 ft container





Overview

Telecom base stations are often installed in remote locations or areas with unreliable grid infrastructure. Consequently, they rely heavily on backup power systems to bridge any power interruptions. This article will explore in detail how to secure backup power for telecom base stations, discussing the components involved, advanced technologies, best practices, and future trends to ensure continuous. Mobile network base stations are generally protected against power loss by batteries. My understanding is that they used to use negative 48V DC power, i. Today, it's possible to find these telecom batteries, like those made by Victron. In practice, when network operators and engineers search for this term, they are primarily concerned with backup power systems for telecom base stations, network access sites, and central offices. 8 billion by 2032, selecting robust solutions becomes indispensable for telecom applications. Automatic Transfer Switch (ATS): Once battery power is depleted, the ATS automatically switches to a generator. Generator Power: The generator takes over until utility power is restored.



Does the mobile base station have a backup power supply

Do mobile network base stations still use lead acid for backup power?



Mobile network base stations are generally protected against power loss by batteries. My understanding is that they used to use negative 48V DC power, i.e. 24 2-volt lead acid cells in series, ...

How to Choose the Right Backup Battery for Telecom Base Stations

Telecom base stations are the invisible backbone of mobile networks, silently enabling billions of calls, texts, and data transfers every day. Because they must operate around the clock, ...



Test certification



What Powers Telecom Base Stations During Outages?

Telecom batteries for base stations are backup power systems using valve-regulated lead-acid (VRLA) or lithium-ion batteries. They ensure uninterrupted connectivity during grid failures ...

Communication Base Station Backup Battery

When natural disasters cut off power grids, when extreme weather threatens power supply safety, our communication backup power system with intelligent charge/discharge management and military ...

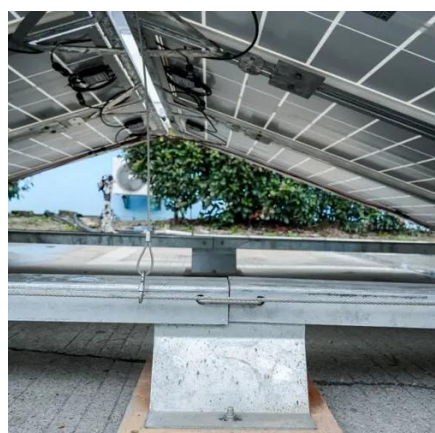


[Cell Phone Towers Use Standby Power Generators for Communications Backup](#)

If power is lost, communications can be disrupted, causing dropped calls and delayed data transmission. To prevent this, cellular towers and communication sites utilize emergency backup ...

[How to Select the Best ESTEL Battery Backup for Base Stations](#)

ESTEL battery backup systems excel in meeting these challenges, offering an uninterruptible power supply tailored to the needs of telecommunications equipment. By choosing the ...



[Securing Backup Power for Telecom Base Stations - leagend](#)

This article will explore in detail how to secure backup power for telecom base stations, discussing the components involved, advanced technologies, best practices, and future trends to ...

UPS Batteries in Telecom Base



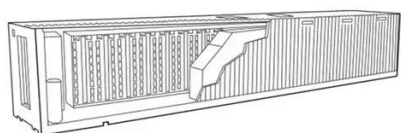
Stations - leagend

Telecom base stations are typically located in remote areas or urban locations with fluctuating power quality. While the grid supplies the primary power, these base stations must have a ...



[Understanding Backup Battery Requirements for Telecom Base Stations](#)

Telecom base stations require reliable backup power to ensure uninterrupted communication services. Selecting the right backup battery is crucial for network stability and efficiency.



[Communication Batteries: Why Telecom Base Stations Have Unique ...](#)

The phrase "communication batteries" is often applied broadly, sometimes including handheld radios, emergency devices, or general-purpose backup batteries. In practice, when ...





Contact Us

For catalog requests, pricing, or partnerships, please visit:

<https://www.firmaskrzypek.pl>

Phone: +48 22 426 71 90

Email: info@firmaskrzypek.pl

Scan the QR code to access our WhatsApp.

