



EMS for installing communication base station on small roof





Overview

Fill out the form below and we'll get back to you. Specializing in rooftop installations of wireless communications infrastructure including base station shelters and custom support structures. NFPA 1225, Standard for Emergency Services Communications, defines an in-building emergency responder communications enhancement system as “a combination of components, radio frequency emitting devices, antennas, cables, power supplies, control circuitry, and programming installed at a specific. The 2021 Virginia Construction Code (VCC), Section 918, In-Building Emergency Communications Coverage discusses requirements and exceptions for the installation of dedicated infrastructure to accommodate and perpetuate continuous in-building emergency wireless communication equipment for emergency. To address this critical life safety need, model fire and building codes now mandate that buildings have a signal booster system, commonly referred to as an emergency responder communication enhancement system (ERCES) or public safety distributed antenna system (DAS).



EMS for installing communication base station on small roof



[EMS charges for small rooftop communication base stations](#)

Murphy Tower Service specializes in challenging rooftop installations of wireless communications infrastructure including base station shelters and custom support structures.

[Human Exposure to Radio Frequency Fields: Guidelines for ...](#)

The combination of antenna towers and associated electronic equipment is referred to as a "cellular or PCS cell site" or "base station." Cellular or PCS cell site towers are typically 50-200 feet ...



Gateway and Base Station Installation Guide

Station use the same IP66 rated enclosure. Both Gateways and Base Stations are available w. h either ethernet or cellular connections. The Cellular versions include a cellular a. 100140, 100141, 100150 ...

[Installing Base Stations & Repeaters: Best Practices for Facilities](#)

Base stations and repeaters transform two-way radios into full communication networks for schools, warehouses, and facilities. By extending range, eliminating dead zones, and supporting ...



Carlson Roof Towers

Whether installed on roof or ground, these strong, robust towers provide a reliable, adaptable antenna mounting solution. A reliable wireless communications system starts with a solid base - and your ...



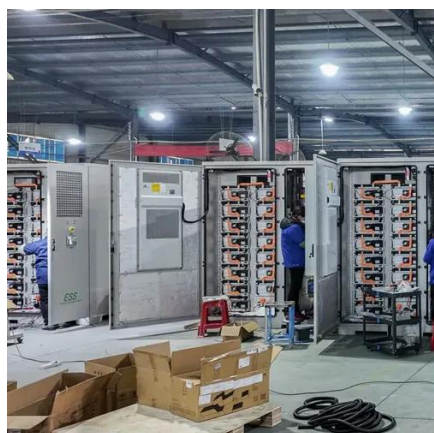
[Public Safety DAS Systems Code Requirements for Building Life ...](#)

To address this critical life safety need, model fire and building codes now mandate that buildings have a signal booster system, commonly referred to as an emergency responder communication ...



[What Is an Emergency Responder Communications Enhancement ...](#)

When the signal can't get to the portable radio due to interference, an emergency responder communications enhancement system needs to be installed to amplify and repeat the ...



ERCES Submittal and Permit



Requirements Guidelines

The design, installation, maintenance, and repair of ERCES requires hiring qualified personnel to ensure the system meets the coverage reliability requirements of NFPA 72 and NFPA 1225.



Public Safety Primer

An In-Building Emergency Responder Communications Enhancement System (ERCES) is a wireless communications system used by first responder and emergency services personnel, such as police, ...

Rooftop Base Stations & Structure , Murphy Tower

Murphy Tower Service specializes in challenging rooftop installations of wireless communications infrastructure including base station shelters and custom support structures.





Contact Us

For catalog requests, pricing, or partnerships, please visit:

<https://www.firmaskrzypek.pl>

Phone: +48 22 426 71 90

Email: info@firmaskrzypek.pl

Scan the QR code to access our WhatsApp.

