



Exclamation mark appears on the ac power of the outdoor light charging power supply





Overview

The AC output side overload short circuit will alarm flicker, the screen appears exclamation point, remove the fault and then re-open the AC button. Remove the load fault device and release it. An exclamation mark on a battery charger signals a warning—but not always a failure. Understanding its meaning prevents damage and ensures safety. Let's explore why this happens and how to fix it - think of this as your troubleshooting GPS for pow HOME / Why Is My Outdoor Power Supply Not Charging?

Troubleshooting Guide & Solutions Why Is My. Master your portable power station with this definitive troubleshooting guide. Disclosure: This guide contains affiliate links. If you have the original Delta (ie, note the Mini, Max, Pro), the input charge rate is fixed at their 'X-Stream' charge rate of 1. If you AC outlet can't provide that much power, it may. Whether camping off the grid, powering essential devices in your caravan, or keeping lights on during a home outage, your iTechworld power station is built to perform. Solar charging input port supports MPPT solar maximum power tracking function. 1 350W / 600W supports a.



Exclamation mark appears on the ac power of the outdoor light charge



Portable Power Station User Manual

Before using or storing the product, please use the AC charging line to plug into the AC input port to be fully charged. The LCD screen will show the current charge. When the LCD screen shows 100%, it is ...

What does the indicator on a battery charger mean?

The exclamation mark is a system notice, which means that the wattage of the power source is not enough. It leads the performance decreased, poor charging efficiency, and the battery level may ...

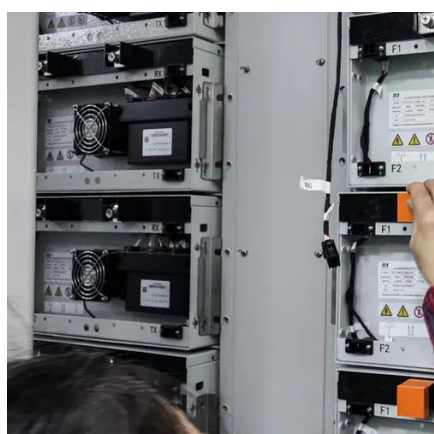


Ecoflow Delta Max Troubleshooting

Solution: The USB A Overload Protection error on the EcoFlow Delta Max occurs when the power load on the USB ports exceeds the maximum limit. This can be caused by connecting too many devices ...

[Troubleshooting Common Portable Power Station Issues: A Practical ...](#)

A comprehensive guide to diagnosing and resolving common portable power station issues, from not turning on to solar charging failures, ensuring minimal downtime and maximum device lifespan.



[What Does an Exclamation Mark Mean on a Battery Charger?](#)

An exclamation mark on your battery charger serves as an important warning signal that demands attention. Throughout this guide, we've explored its various causes, from simple connection ...

[Why Is My Outdoor Power Supply Not Charging? Troubleshooting ...](#)

If you've ever faced the frustration of an outdoor power supply not charging, you're not alone. This common issue affects campers, RV owners, and professionals relying on portable energy solutions.



Eco Flow Delta won't charge : r/batteries

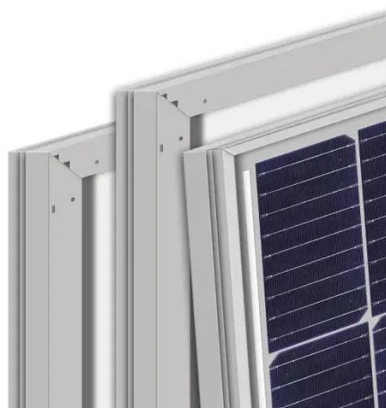
For the Delta 1300, I was able to reset mine and get it charging by first turning on the unit (with AC power applied), then with both AC and DC off, press and hold both switches simultaneously.

[Anyone know what this flashing red](#)



[exclamation mark means on my ...](#)

this flashing red exclamation mark means on my Ecoflow delta max? It wont charge from. the wall outlet all of a sudden. charged for a couple months via 12v. did an update and it fixed ...



[Portable Power Station Troubleshooting: Common Issues and Fixes](#)

In this mode, low-power devices (like phone chargers) may not trigger the socket. Quick Fix: Press and hold the AC button for two seconds to force "Always On" mode.



Contact Us

For catalog requests, pricing, or partnerships, please visit:

<https://www.firmaskrzypek.pl>

Phone: +48 22 426 71 90

Email: info@firmaskrzypek.pl

Scan the QR code to access our WhatsApp.

