



# Four terminals of solar panel





## Overview

---

The four wires found on a solar panel are typically used for specific functions related to the collection and conversion of solar energy. This guide will walk you through how to connect four solar panels to create a 24V system. We'll break down the process, ensuring clarity for both beginners and seasoned DIY enthusiasts. Understanding the Basics of. Though many electrical and mechanical components are used while installing solar panels, below is a list of the basic components.



## Four terminals of solar panel



### The Complete Guide to Solar Panel Wiring Diagrams

Series connections require you to wire the positive and negative terminals of each panel together in a chain.

### [Mastering Solar Panel Wiring: A Comprehensive Guide to PV Systems](#)

In series wiring, the voltage of each solar panel is combined. The positive terminal of one solar panel is connected to the negative terminal of the next solar panel. Parallel wiring increases the ...



### Solar Panel Wiring Basics: How to Wire Solar Panels

Master solar panel wiring with this in-depth guide. Learn how to configure series and parallel connections, calculate voltage and current, and safely integrate inverters, charge controllers, and ...

### [What are the 4 wires on the solar panel used for? , NenPower](#)

The four wires found on a solar panel are typically used for specific functions related to the collection and conversion of solar energy. 1. Positive terminal, 2. Negative terminal, 3. Bypass ...



## How to Connect 4 Solar Panels in Parallel

Successfully combining four solar panels in parallel requires specific hardware designed to consolidate the four separate positive and negative lines into a single pair of main output cables.

## [What are the 4 solar wires connected to? NenPower](#)

The four solar wires connect to distinct components of the solar energy system: Positive terminal of the solar panel, Negative terminal of the solar panel, Inverter input connections, and ...



## [Identifying Positive and Negative Terminals on a Solar Panel](#)

In this article, we'll explore how to identify the positive and negative terminals of a solar panel, check solar panel polarity, and effectively connect a solar panel to a battery.

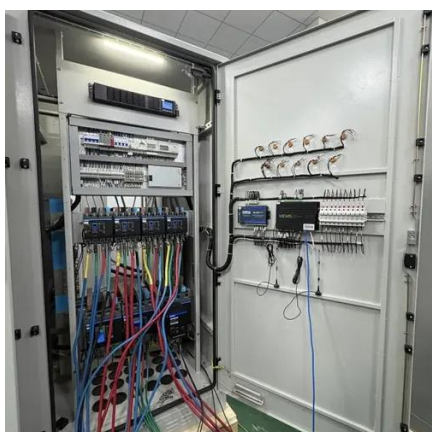


## Types of Solar Panel Ports and



## Selection Tips

This article explains the types of solar panel output ports and terminals, and offers tips for choosing the right ones. Detailed explanations are provided for different panel types and uses.



## [How to Connect 4 Solar Panels for a 24V System , Step-by-Step Guide](#)

For many setups, achieving a 24V system using four solar panels is a common goal. This guide will walk you through how to connect four solar panels to create a 24V system. We'll break ...

## Solar Panel Connectors and Cables

Years ago, solar modules were built with a junction box on the back that required the installer to manually attach wires to the positive and negative terminal posts. This method is still used on smaller ...





## Contact Us

---

For catalog requests, pricing, or partnerships, please visit:

<https://www.firmaskrzypek.pl>

Phone: +48 22 426 71 90

Email: [info@firmaskrzypek.pl](mailto:info@firmaskrzypek.pl)

Scan the QR code to access our WhatsApp.

