



# How about opening a base station in Communications





## Overview

---

Installing a Base Transceiver Station (BTS) is a critical step in building mobile communication networks. Here's a step-by-step guide to the process: 1. Site Acquisition and Survey Objective: Select and acquire a suitable location for the BTS. Activities: Identify coverage. A typical communication base station combines a cabinet and a pole. It usually connects the device to other networks or devices through a dedicated high bandwidth wire or fiber optic connection. Base stations typically have a transceiver, capable of sending and receiving signals. Base station (or base radio station, BS) is - according to the International Telecommunication Union's (ITU) Radio Regulations (RR) [1] - a "land station in the land mobile service."



## How about opening a base station in Communications



### What are Base Station in Telecommunications?

Base stations contain several key parts. The antenna sends and receives radio energy. The transceiver handles signal modulation. The baseband processor converts signals to digital form. ...



### Base Stations

Base stations form a key part of modern wireless communication networks because they offer some crucial advantages, such as wide coverage, continuous communications and an array of ...

### [Process of Installing a Base Transceiver Station \(BTS\)](#)

Installing a Base Transceiver Station (BTS) is a critical step in building mobile communication networks. Here's a step-by-step guide to the process:



### [Complete Guide to 5G Base Station Construction , Key Steps, ...](#)

Explore how 5G base stations are built--from site planning and cabinet installation to power systems and cooling solutions. Learn the essential components, technologies, and challenges ...



## Base station

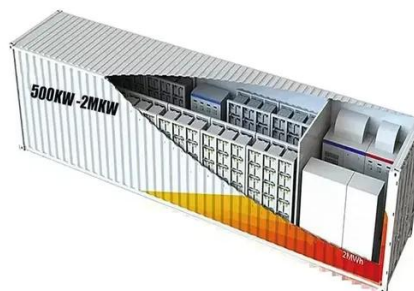
OverviewComputer networkingLand surveyingWireless communicationsSee also

In the area of wireless computer networking, a base station is a radio receiver/transmitter that serves as the hub of the local wireless network, and may also be the gateway between a wired network and the wireless network. It typically consists of a low-power transmitter and wireless router.



### [Understanding Base Stations: The Backbone of Wireless ...](#)

Base Station But what exactly is a base station, and how does it work in wireless communication networks? This article explores the concept of base stations, their functions, and their ...



### [What Is a Base Station? Definition and How It Works](#)

Define the central communication hubs of modern wireless technology. Learn how base stations manage capacity and ensure reliable connections.





## Base Station Design for Wireless Communications Engineers

In this article, we target the audience of Wireless Communications Engineers working within Telecommunications Carriers, and we discuss comprehensive strategies for base station design that ...

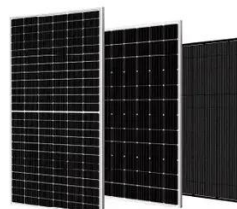


## What is a Base Station? -- From Communication Core to Thermal ...

How Does a Base Station Work? A base station's operation can be summarized in three steps: wireless transmission, signal conversion, and network connection. First, the base station uses ...

## The Base Station in Wireless Communications: The Key to Modern

Equipped with an electromagnetic wave antenna, often placed on a tall mast, the base station enables communication between mobile terminals (such as mobile phones or pagers) and the ...





## Contact Us

---

For catalog requests, pricing, or partnerships, please visit:

<https://www.firmaskrzypek.pl>

Phone: +48 22 426 71 90

Email: [info@firmaskrzypek.pl](mailto:info@firmaskrzypek.pl)

Scan the QR code to access our WhatsApp.

