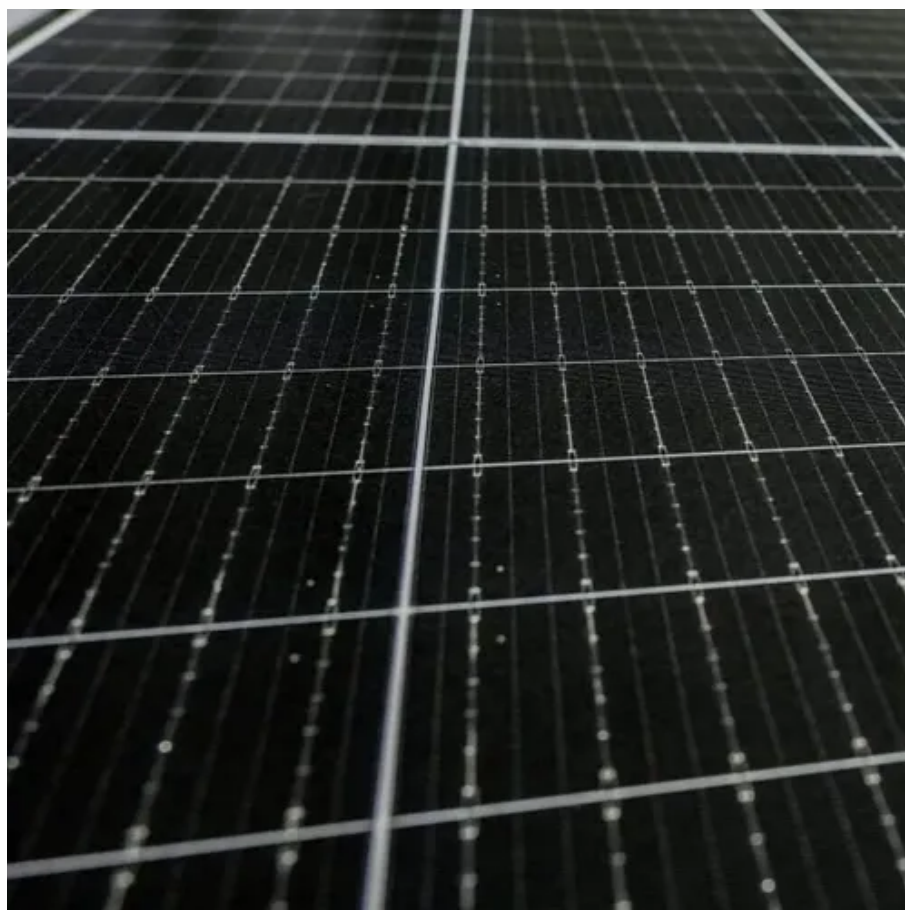




# How big an inverter is suitable for a 200w solar panel





## Overview

---

How do I choose the right size inverter for my 200-watt solar panel system?

Choose an inverter with a capacity that matches or slightly exceeds the total wattage of your solar panel system. Get it wrong, and you'll either waste money on oversized equipment or lose precious energy production. This guide will help you understand the factors that influence inverter selection, including panel wattage, system efficiency, and intended applications.



## How big an inverter is suitable for a 200w solar panel



### [Best Inverter For 200 Watt Solar Panel \[Updated: February 2026\]](#)

Trust me, after thorough testing, this setup offers the best mix of performance, durability, and value for a 200-watt panel. If comfort and reliability matter to you, this one's a winner. Top ...

### [What Size Inverter for 200W Solar Panel? Do you Really Need it?](#)

For a 200 watt solar panel, you should look for an inverter with a peak power rating of at least 200 watts. Continuous Power Rating: This is the amount of power the inverter can supply ...



### **Complete Solar Inverter Sizing Guide**

Get it right and your system runs smoothly for years. In this guide, you'll learn what size solar inverter you need, how to size an inverter for solar systems step by step, how panel output ...

### [What Size Inverter for 200W Solar Panel? Do you Really Need it?](#)

For a 200W solar panel system, you need anywhere between 300-1000 watt inverter to run AC appliances. However, the exact size of the inverter you need depends on the specific ...



## what size inverter for 200 watt solar panel

Choose an inverter with a capacity that matches or slightly exceeds the total wattage of your solar panel system. For a 200-watt system, a 200-250 watt inverter is recommended.

## Inverter Size Calculator - self2solar

Determining the correct inverter size depends on your solar array's capacity and your household's power needs. Generally, the inverter should be sized to match about 80-100% of your ...



## [What Size Inverter For A 200W Solar Panel Calculator](#)

Understanding the precise inverter size you need for a 200W solar panel setup can be a daunting task. What Size Inverter for a 200W Solar Panel Calculator assists you in determining the ...

## [Choosing the Right Size Inverter for 200](#)



## [Watt Solar Panel](#)

For a 200 watt solar panel, you should look for an inverter with a peak power rating of at least 200 watts. Continuous Power Rating: This is the amount of power the inverter can supply ...



## [How to Choose the Right Size Solar Inverter: Step-by-Step with Real](#)

This guide walks you through calculating inverter size based on panel capacity, power usage, and safety margins. We use real examples from installations in Texas and Queensland to ...

## [Solar Inverter Sizing Guide: How to Size Your Inverter](#)

Choosing the right solar inverter size can make or break your solar investment. Get it wrong, and you'll either waste money on oversized equipment or lose precious energy production. ...



## **What size inverter for a 200w solar panel?**

Here is a table of the recommended inverter sizes for different wattage appliances: If you plan to use multiple appliances at the same time, you will need to add up the wattage of all the ...



## Contact Us

---

For catalog requests, pricing, or partnerships, please visit:

<https://www.firmaskrzypek.pl>

Phone: +48 22 426 71 90

Email: [info@firmaskrzypek.pl](mailto:info@firmaskrzypek.pl)

Scan the QR code to access our WhatsApp.

