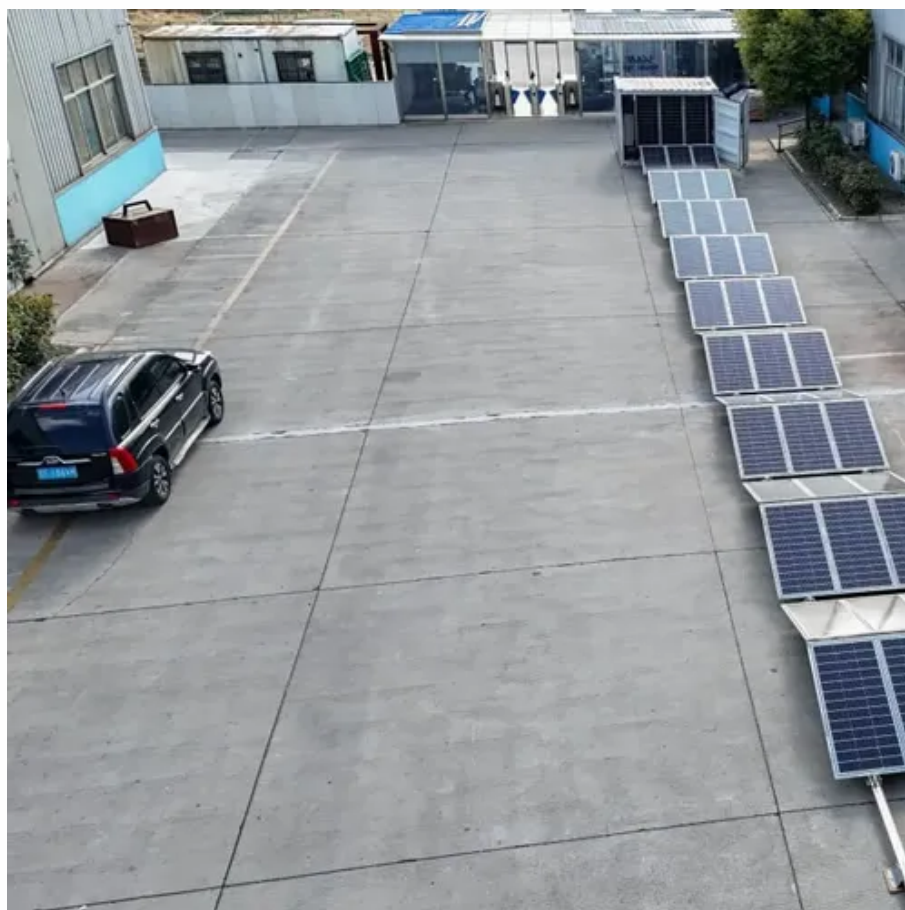




How big an inverter should I use for a 58kW module





Overview

A 4-6 kW inverter is ideal, depending on the load and surge requirements. Is it better to use one inverter or multiple inverters?

A. Choosing the right solar inverter size is critical—and one of the most common questions: what solar inverter size do I need?

Whether you are installing a rooftop system in California, powering a remote cabin in Alberta, or sizing for a community center in Rajasthan, getting it right means. A solar inverter should closely match your solar system's output in kW—typically within 80% to 120% of your total panel capacity. Your inverter needs to handle that. Watts (W) measure instant power while kilowatts (kW) are simply watts divided by 1,000. Example: Total load = 2,700 W (2. Inverter Size = MAX (Array Capacity × 1.25) for safety margin This formula has been verified by certified solar engineers and.



How big an inverter should I use for a 58kW module



Inverter Size Calculator

This inverter size calculator estimates solar inverter capacity, DC-to-AC ratio, and basic string configuration using PV module data, inverter topology, and approximate temperature effects.

[How to Choose the Right Size Solar Inverter: Step-by-Step with Real](#)

This guide walks you through calculating inverter size based on panel capacity, power usage, and safety margins. We use real examples from installations in Texas and Queensland to ...



[Solar Inverter Sizing Guide: How to Size Your Inverter](#)

Learn how to properly size your solar inverter with our complete guide. Discover the optimal DC-to-AC ratio and avoid costly sizing mistakes.

How To Size A Solar Inverter in 3 Easy Steps

In this guide, we share 3 easy steps on how to size a solar inverter correctly. We explain the key concepts that determine solar inverter sizing including your power needs, the type and number of ...



[What Size Solar Inverter Do I Need? Experts Break It Down](#)

Picking the right solar inverter isn't rocket science, but it's not a wild guess either. Match your inverter size to your solar panel output, leave a little headroom, and don't cheap out on quality.

Complete Solar Inverter Sizing Guide

Get it right and your system runs smoothly for years. In this guide, you'll learn what size solar inverter you need, how to size an inverter for solar systems step by step, how panel output ...



Inverter Size Calculator - self2solar

Choosing the right inverter size is essential for a reliable and efficient solar power system. Our Inverter Size Calculator simplifies this task by accurately estimating the recommended ...

[How to Right-Size Solar Inverters for Peak](#)



Efficiency Gains

Right-sizing a solar inverter aligns the DC array and the AC conversion stage so the system runs in its most efficient operating band for more hours. You cut conversion losses, keep ...



How to Size an Inverter for a Solar System What Steps to Follow

Sizing a solar inverter correctly depends primarily on your PV system's rated capacity and layout. However, several other variables must also be factored into the calculations. Here is the step ...

Inverter Sizing Calculator

How to use this calculator: Enter your solar array capacity and load requirements to determine optimal inverter size.





Contact Us

For catalog requests, pricing, or partnerships, please visit:

<https://www.firmaskrzypek.pl>

Phone: +48 22 426 71 90

Email: info@firmaskrzypek.pl

Scan the QR code to access our WhatsApp.

