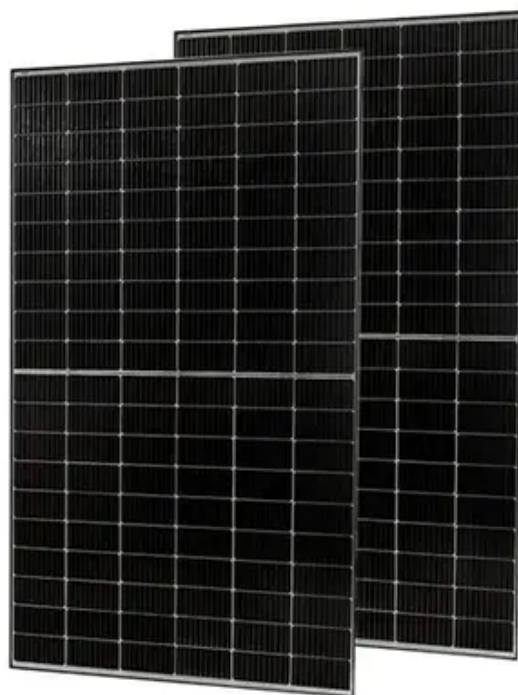




How big is the area of a 12 watt photovoltaic panel





Overview

For residential solar panels, the panels measure an average of 65 inches (5. If you have a 1000 sq ft roof, and you can use 75% of that roof area for solar panels, you can theoretically put 123 100-watt solar panels on a 1000 sq ft roof. A typical 300-watt solar panel is. Online solar calculators can give a rough estimate of how much solar you need to power your home, but you may want to perform your own sizing calculations to fine-tune your choices. Here's a step-by-step overview of the process we follow when sizing solar systems for our customers. Note: This. Moreover, solar panel size per kW and watt calculations are estimates that may vary depending on panel efficiency, shading, and orientation. For specific sizing and installation recommendations, it will be good to consult with a professional solar installer. 6 to 2 square metres per panel.



How big is the area of a 12 watt photovoltaic panel



[How Big is a Solar Panel? A Guide to Solar Panel Dimensions](#)

For residential solar panels, the panels measure an average of 65 inches (5.4 feet) by 39 inches (3.25 feet), covering an area of 17.25 square feet. This measurement may vary slightly ...

How to Size a Solar System [Step-by-Step Guide]

Once you have your final array size, simply divide by the wattage of your desired solar panels to figure out how many panels you need. Using our example of a 7.2 kW (7,200-watt) array for 100% offset, ...



Solar Panel Sizes and Wattage Explained

Moreover, solar panel size per kW and watt calculations are estimates that may vary depending on panel efficiency, shading, and orientation. For specific sizing and installation ...

[Solar Panel Size and Weight: How Big Are Solar Panels?](#)

Residential solar panels consist of around 60 solar cells and are roughly 5.5 feet long and 3 feet wide. Solar panels usually weigh about 40 to 50 pounds. Commercial solar panels are generally ...



Solar Panel Size And Weight: A Comprehensive Guide

When considering residential solar panels, typical configurations consist of 60 cells measuring approximately 3.25 feet by 5.5 feet. These panels cover an area of 17.62 square feet and weigh



How to Size a Solar System [Step-by-Step Guide]

Moreover, solar panel size per kW and watt calculations are estimates that may vary depending on panel efficiency, shading, and orientation. ...



[How to Calculate the Surface Area Required by Solar Panels](#)

But wait, are you sure you have enough space in your garden or your backyard or your rooftop to install the solar panels? How can you do a rough estimate of the area required by the solar ...



[Standard Solar Panel Sizes And Wattages](#)



(100W-500W Dimensions)

The goal here is to get to the average solar panel size by wattage. You can find typical dimensions of 100W, 150W, 170W, 200W, 200W, 220W, 300W, 350W, 400W, and 500W solar panels summarized ...

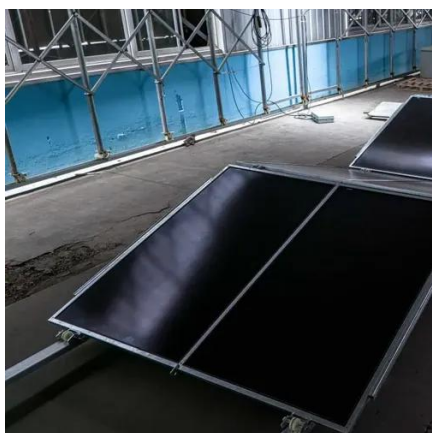


The Complete Guide to Solar Panel Size: How Big Are Solar Panels?

Monocrystalline panels are lighter because they have an efficient design, with most weighing about 18 kilograms (40 pounds) for every 300 watts. In contrast, polycrystalline ones may ...

Solar Panel Dimensions and Sizes: Complete Guide

There are three main sizes of solar panels to know: 60-cell, 72-cell, and 96-cell. For commercial and residential solar panels, the 60-cell and 72-cell solar panels size are most commonly used as the 96 ...



Guide to Solar Panel Sizes & Dimensions (October 2025)

Discover which solar panel sizes and dimensions are the most common in the UK, as well as which size is the best for your home.



Contact Us

For catalog requests, pricing, or partnerships, please visit:

<https://www.firmaskrzypek.pl>

Phone: +48 22 426 71 90

Email: info@firmaskrzypek.pl

Scan the QR code to access our WhatsApp.

