



How does a base station communicate





Overview

In communications, a base station is a communications station installed at a fixed location and used to communicate as part of one of the following:

- a system, or;
- a system such as or .



How does a base station communicate



[Understand Cellphone Basestation Technology » Electronics Notes](#)

The base station is the most visible element of a mobile or cellular telecommunications network. These cell phone base stations can take many formats, but they are characterised by the antennas on ...

[Base Stations and Cell Towers: The Pillars of Mobile Connectivity](#)

Base stations use antennas mounted on cell towers to send and receive radio signals to and from mobile devices within their coverage area. This communication enables users to make ...



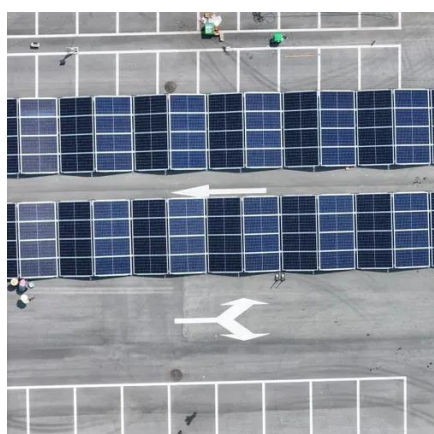
[What is a Base Station? -- From Communication Core to Thermal ...](#)

Simply put, a base station (BS) is a wireless transceiver device in a mobile communication network that provides wireless coverage and communicates with mobile terminals ...



What Is A Base Station?

Base stations play a central role in two-way radio systems, such as citizens band (CB) radio and ham radio. In these setups, the base station serves as a fixed point of communication, ...

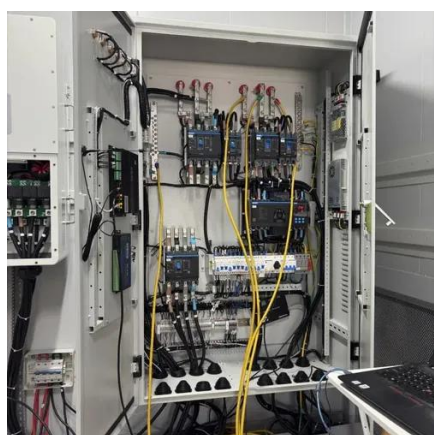


[Base Station's Role in Wireless Communication Networks](#)

The base station transmits and receives signals, ensuring seamless communication over radio frequencies. In essence, it acts as the intermediary between the user and the network, enabling ...

Base station

Base stations use RF power amplifiers (radio-frequency power amplifiers) to transmit and receive signals.



[Understanding Base Stations: The Backbone of Wireless ...](#)

A base station is a fixed communication infrastructure that connects mobile devices (such as smartphones, tablets, or IoT devices) to a network, enabling wireless communication.

[What Is a Base Station? Definition and](#)



How It Works

Its function is to transmit and receive radio signals to and from wireless client devices. The base station acts as a converter, taking radio waves from a mobile phone and transforming them ...



Base station

OverviewWireless communicationsLand surveyingComputer networkingSee also

In radio communications, a base station is a wireless communications station installed at a fixed location and used to communicate as part of one of the following: o a push-to-talk two-way radio system, or;o a wireless telephone system such as cellular CDMA or GSM cell site.

Base Stations

Base stations form a key part of modern wireless communication networks because they offer some crucial advantages, such as wide coverage, continuous communications and an array of ...



What Is a Telecom Base Station and How Does It Work?

In simple terms, the base station uses radio signals to cover a certain geographic area, allowing mobile devices within this area to connect to the communication network and the internet through the mobile ...



Contact Us

For catalog requests, pricing, or partnerships, please visit:

<https://www.firmaskrzypek.pl>

Phone: +48 22 426 71 90

Email: info@firmaskrzypek.pl

Scan the QR code to access our WhatsApp.

