



# How does the emergency base station communicate





## Overview

---

A base station is used at each radio site to communicate with the mobile and portable radios assigned to field units. But for modern organizations, a base station isn't a one-size-fits-all solution. It's one key component in a layered voice network that. NFPA 1225, Standard for Emergency Services Communications, defines an in-building emergency responder communications enhancement system as “a combination of components, radio frequency emitting devices, antennas, cables, power supplies, control circuitry, and programming installed at a specific. The job of emergency responders at every level of government—federal, state, local, tribal, and territorial—is to respond to and manage incidents of varying size and scope, and assist communities with recovery efforts. First responder communications. Each of these entities is served by at least one primary emergency communications center (ECC), providing initial screening of 9-1-1 calls for service and communicating with response personnel in the field. However, the very structures designed to protect us - with their steel, concrete, and low-emissivity glass - can become silent zones for critical radio signals.



## How does the emergency base station communicate

---



### [Communications and Dispatching , Cooney's EMS Medicine](#)

Describe common terms used in radio communication to communicate the status of a unit. Describe an emergency department base station and list types of individuals who may be answering the call.

### [How a Base Station Radio Strengthens Campus and Emergency ...](#)

A base station radio remains a critical part of reliable, real-time communication. But the most effective systems go a step further - integrating base stations with digital radios, LTE coverage, ...



### [Five FAQs on Emergency Responder Radio Communications ...](#)

An Emergency Responder Radio Communications System (ERRCS) significantly enhances public safety and response time during emergencies by ensuring clear and reliable 2-way ...

## Public Safety Primer

Additionally, many emergency responders utilize new types of communication technologies that must remain viable while performing their respective duties. This includes, but is not limited to, cellular ...



## Key Components of a Reliable Emergency Responder Radio System

The primary purpose of an Emergency Responder Radio Communication System (ERCES) is to ensure reliable two-way radio signal coverage for first responder communication ...



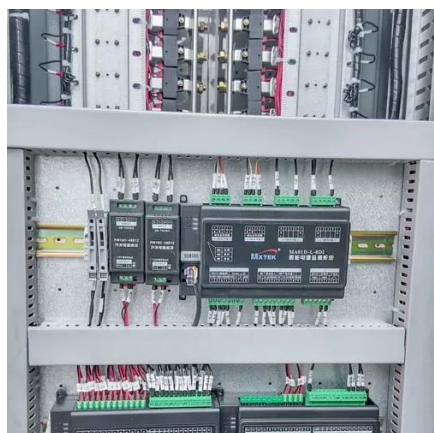
## **EMT Chapter 5: Communication Flashcards , Quizlet**

Study with Quizlet and memorize flashcards containing terms like What is a base station?, What is the role/range of a mobile radio?, What is the role/range of a portable radio? and more.



## What Is an Emergency Responder Communications Enhancement ...

One of the most common ways emergency responders communicate is through portable radios. Radios work by transmitting and receiving electromagnetic waves of a certain frequency.



## **Land Mobile Radio (LMR) 101**



Base station radios are located in fixed positions, such as public safety answering points or dispatch centers, and tend to have the most powerful transmitters. A network is required to connect the ...



## PSC Magazine (PSCS)

A base station is used at each radio site to communicate with the mobile and portable radios assigned to field units. All communications are conducted on the same individual radio ...

## [A Comprehensive Guide to ERRCS: Understanding the Components ...](#)

Emergency Responder Radio Communications Systems (ERRCS) are essential for maintaining reliable communication among first responders during emergencies, making them a vital ...





## Contact Us

---

For catalog requests, pricing, or partnerships, please visit:

<https://www.firmaskrzypek.pl>

Phone: +48 22 426 71 90

Email: [info@firmaskrzypek.pl](mailto:info@firmaskrzypek.pl)

Scan the QR code to access our WhatsApp.

