



How heavy is one square meter of photovoltaic panel





Overview

On average, solar panels weigh between 10 and 20 pounds per square meter. The weight doesn't spread evenly across the surface of your solar panel. This weight makes them manageable, but still requires careful lifting during installation. A typical residential array will weigh well below the average roof's weight-bearing capacity. Among the most important factors that make solar panels so heavy: How Big Is a 100-Watt Solar Panel?

A 100-watt solar panel measures 47 inches long by 21. However, it's not just the weight of the individual panels that matters—it's the



How heavy is one square meter of photovoltaic panel



How heavy is a photovoltaic panel per square meter

The solar shingles used to make these solar roofs weigh less than solar panels, at about thirteen pounds per square foot (sixty-three kilograms per square meter) and while that seems heavy,

Solar Panel Weight Guide - Solar Generation USA

A typical residential solar installation with about 15-20 panels can weigh 300 to 450 kilograms (660 to 990 pounds) in total, which adds approximately 10 to 20 kilograms per square meter (2 to 4 pounds ...



How Much Do Solar Panels Weigh?

Different manufacturers create solar panels of different weights. On average, solar panels weigh between 10 and 20 pounds per square meter. For a sound roof, this weight won't threaten the ...

Solar Panels Sizes and Weights (All Sizes)

Solar panels typically weigh between 40 to 50 pounds per square meter, with variations based on the type and manufacturer. These weights are essential considerations ...

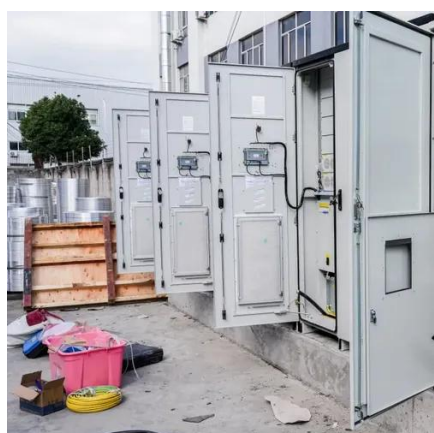


Solar Panel Weight Guide

Some tiny portable panels weigh only 5 pounds, and heavy-frame panels can clock in at 62 pounds. However, these outliers don't appear on homes and businesses -- they're for unique ...

[Solar Panel Size and Weight: A 2025 Guide \(with Examples\)](#)

What's the average solar panel size and weight? Our 2025 guide gives residential & commercial examples and explains why a structural roof assessment is essential.



How Much Does a Solar Panel Weigh?

Solar panels typically weigh between 40 to 50 pounds per square meter, with variations based on the type and manufacturer. These weights are essential considerations when planning ...

How much does a square



photovoltaic panel weigh

The solar panel itself and the mounting or installation tools make up the two components that make up the weight of a solar panel. A solar panel typically weighs two to four pounds per square foot.



Solar Panels Sizes and Weights (All Sizes)

100-watt solar panels that are 8.53 kilograms and measure 1.19 meters long by 0.16 meters wide have an area of 0.65 square meters. They will weigh 13.12 kilograms per square meter.

[How Much Does a Solar Panel Weigh?](#) [Solar Panel Size, kg/sq.m., W/kg](#)

A typical commercial solar panel weighs about 50 pounds (18.14 kg), and measures about 6.5 feet long by 3.5 feet wide (2 x 1.1 meters). which gives it a surface area of approximately ...



average photovoltaic solar panel weight guide

Generally, standard residential photovoltaic panels weigh between 40 and 50 pounds (about 18 to 22 kilograms). This weight makes them manageable, but still requires careful lifting ...



Contact Us

For catalog requests, pricing, or partnerships, please visit:

<https://www.firmaskrzypek.pl>

Phone: +48 22 426 71 90

Email: info@firmaskrzypek.pl

Scan the QR code to access our WhatsApp.

