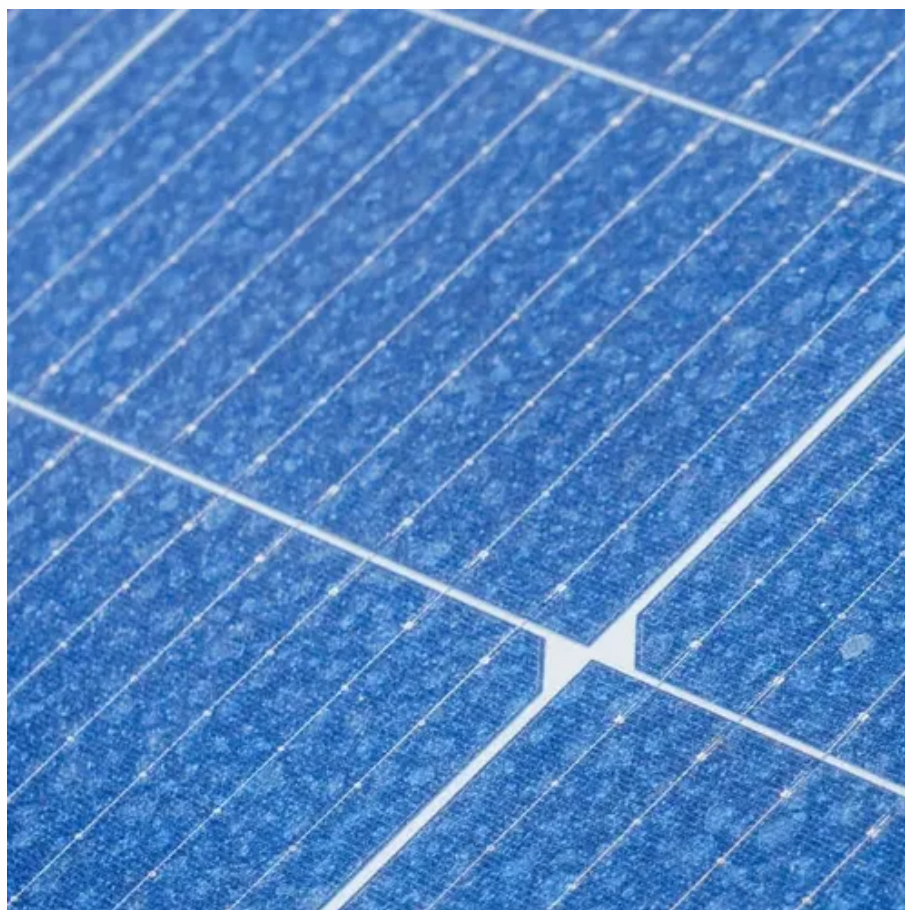




How long are the blades for wind power generation





Overview

Modern onshore wind turbines commonly feature blades averaging between 70 to 85 meters (approximately 230 to 279 feet) in length. These blades are fundamental to harnessing wind power, and their design and efficiency directly influence a wind turbine's overall performance and energy output. The length of wind turbine blades varies considerably, depending on whether they are intended for onshore or offshore installations and. By doubling the blade length, the power capacity (amount of power it actually produces versus its potential) increases four-fold without having to add more height to the tower [1]. Today, blades can be. Wind energy has undergone a massive transformation, represented by the colossal blades propelling turbines into the future of renewable power. During. It's the first question investors, engineers, and logistics managers ask, because blade length dictates swept area, annual-energy production (AEP), and — ultimately — project economics.



How long are the blades for wind power generation



[How Long Are Wind Turbine Blades? Sizes, Materials & Trends](#)

What is the practical maximum length for onshore wind turbine blades today? Most OEMs cap onshore blades around 85 m because of transport limits, though segmented solutions can ...

[How Long Are Wind Turbine Blades? Explore Impressive Dimensions](#)

Initially, wind turbine blades averaged around 20 meters, but modern turbines boast blades that can exceed 80 meters, dramatically transforming energy production capabilities.



[How Long Are Wind Turbine Blades? Factors & Size Explained](#)

The length of wind turbine blades varies considerably, depending on whether they are intended for onshore or offshore installations and their power capacity. Modern onshore wind ...



[How Is The Length Of A Wind Turbine Blades Determined](#)

The average blade length of a typical onshore wind turbine is about 165 feet (50 meters), but there is a trend towards taller turbines, particularly offshore, where blades can span up to 260 ...



How Long Are the Wind Turbine Blades?

Longer blades capture more wind, resulting in a greater generation capacity for the turbine. The relationship isn't linear, but significant increases in blade length lead to proportionally ...

[How Long are Wind Turbine Blades: The Quick Guide to Their ...](#)

Wind energy has undergone a massive transformation, represented by the colossal blades propelling turbines into the future of renewable power. From modest beginnings with blades a ...



[How Long Are Wind Turbine Blades? The Massive Scale of ...](#)

The blades on big wind turbines can reach impressive lengths, often exceeding 100 meters. These massive blades allow turbines to harness more wind energy, greatly boosting their ...



- ✓ TELECOM CABINET
- ✓ BRAND NEW ORIGINAL
- ✓ HIGH-EFFICIENCY

How Long are Wind Turbine Blades?



Wind energy has undergone a massive transformation, represented by the colossal blades propelling turbines into the future of renewable power. ...



[How Long Are the Blades on a Wind Turbine: Mind-Blowing Facts](#)

Modern onshore wind turbines typically have blades ranging between 40 and 70 meters in length. Offshore turbines, often built at a grander scale, can exceed 80 meters per blade.

Wind Turbine Blade Size: How Big Are They and Why?

According to The United States Department of Energy, most modern land-based wind turbines have blades of over 170 feet (52 meters). This means that their total rotor diameter is longer ...



How Long are Wind Turbine Blades?

Forty years ago, wind turbine blades were only 26 feet long and made of fiberglass and resin [3]. Today, blades can be 351 feet, longer than the height of the Statue of Liberty, and produce ...





Contact Us

For catalog requests, pricing, or partnerships, please visit:

<https://www.firmaskrzypek.pl>

Phone: +48 22 426 71 90

Email: info@firmaskrzypek.pl

Scan the QR code to access our WhatsApp.

