



How long are the blades in a power station





Overview

Wind energy has undergone a massive transformation, represented by the colossal blades propelling turbines into the future of renewable power. During. By doubling the blade length, the power capacity (amount of power it actually produces versus its potential) increases four-fold without having to add more height to the tower [1]. Forty years ago, wind turbine blades were only 26 feet long and made of fiberglass and resin [3]. Turbine blades vary in size, but a typical modern land-based wind turbine has blades of over 170 feet (52 meters). The largest turbine is GE's Haliade-X offshore wind turbine, with blades 351 feet long (107 meters) - about the. Wind turbine blades range from under 1 meter to 107 meters (under 3 to 351 feet) long.



How long are the blades in a power station

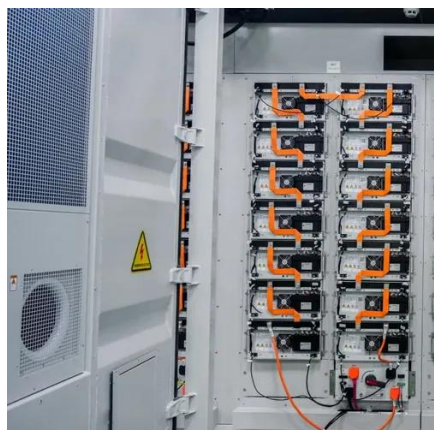


[How Long Are Wind Turbine Blades? Factors & Size Explained](#)

The length of wind turbine blades varies considerably, depending on whether they are intended for onshore or offshore installations and their power capacity. Modern onshore wind ...

How Long are Wind Turbine Blades?

Forty years ago, wind turbine blades were only 26 feet long and made of fiberglass and resin [3]. Today, blades can be 351 feet, longer than the height of the Statue of Liberty, and produce ...

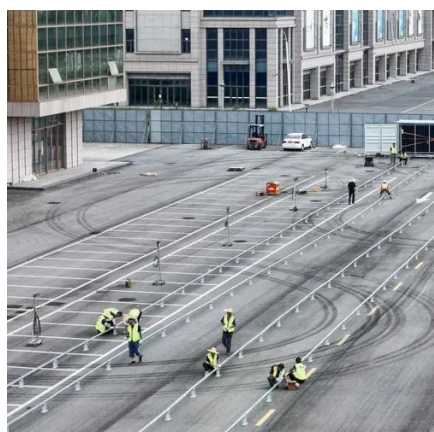


[How Long Are the Blades on a Wind Turbine: Mind-Blowing Facts](#)

Modern onshore wind turbines typically have blades ranging between 40 and 70 meters in length. Offshore turbines, often built at a grander scale, can exceed 80 meters per blade. To put that in ...

How Long are Wind Turbine Blades?

According to The United States Department of Energy, most modern land-based wind turbines have blades of over 170 feet (52 meters). This means that their total rotor ...



[How Long are Wind Turbine Blades: The Quick Guide to Their ...](#)

Wind energy has undergone a massive transformation, represented by the colossal blades propelling turbines into the future of renewable power. From modest beginnings with blades a ...

Wind Turbine Blades; What You Really Need To Know

Wind turbine blade length or wind turbine blades size usually ranges from 18 to 107 meters (59 to 351 feet) long. Depending upon the use of the electricity produced.



Wind Turbine Blade Size: How Big Are They and Why?

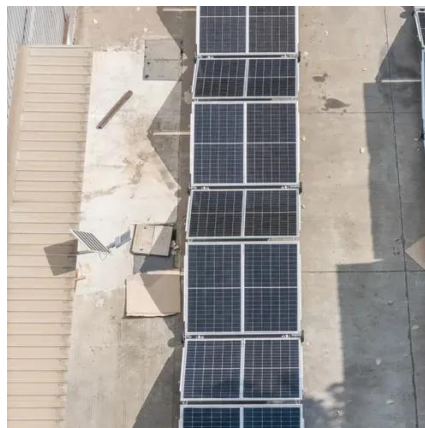
According to The United States Department of Energy, most modern land-based wind turbines have blades of over 170 feet (52 meters). This means that their total rotor diameter is longer ...

[How Long Are Wind Turbine Blades? The](#)



Massive Scale of ...

Wind turbine blades play an essential role in renewable energy, with lengths reaching up to 200 meters (656 feet) for offshore turbines. Most new turbines have rotor diameters exceeding ...



How a Wind Turbine Works

Turbine blades vary in size, but a typical modern land-based wind turbine has blades of over 170 feet (52 meters). The largest turbine is GE's Haliade-X offshore wind turbine, with blades 351 feet long ...



How Long are Wind Turbine Blades? (Answer Might Surprise You)

Wind turbine blades can vary considerably in shape and length, and there is no one "perfect" blade length. The blade length depends on the size of the wind turbine, wind speed in the ...



How a Wind Turbine Works

Wind turbine blades can vary considerably in shape and length, and there is no one "perfect" blade length. The blade length ...



How Long Are Wind Turbine Blades?



Explore Impressive Dimensions

In recent years, the scale of wind turbine blades has reached astonishing heights, with some of the largest blades measuring up to 100 meters (328 feet) long or more.





Contact Us

For catalog requests, pricing, or partnerships, please visit:

<https://www.firmaskrzypek.pl>

Phone: +48 22 426 71 90

Email: info@firmaskrzypek.pl

Scan the QR code to access our WhatsApp.

