



# How long is the construction period for wind power generation





## Overview

---

How long does it take to build a wind turbine from start to finish?

The complete construction process, encompassing planning, permitting, manufacturing, and assembly, typically spans between 6 months and 3 years. This timeframe varies significantly depending on factors like permitting, turbine size, site accessibility, and. The installation of a utility-scale wind turbine is a complex process that extends far beyond the brief period of visible assembly. On average, wind farms take 6 months to build, while developing a wind farm typically takes 4 to 9 years. Factors such as planning applications, construction time, and cost can impact the timeline. The journey begins with initial site assessment and design, which may take several weeks to months.



## How long is the construction period for wind power generation



### [Installation of Wind Turbines: Setting Up a Wind Farm](#)

Laying the foundations for a wind power project involves laying down an impressive amount of concrete. This is typically between 600 and 1,000 tons. Because it's unlikely that you'll ...

### How Long Does It Take to Build a Wind Turbine?

The entire process, from initial planning to full operational status, to build a wind turbine typically takes between 6 months to 3 years. This timeframe varies significantly depending on factors ...



### How Long Does It Take to Install a Wind Turbine?

While the physical construction on-site can take a matter of months, the entire project timeline, from initial concept to the generation of electricity, typically spans one to three years.

### How Long It Takes To Build A Wind Farm

The construction timeline for wind farms varies depending on the size and complexity of the project. On average, wind farms take 6 months to build, while developing a wind farm typically ...



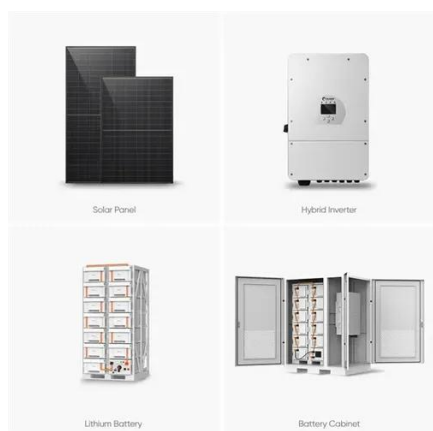
### [How long does it take to build an onshore wind farm?](#)

A small 10 MW onshore site can typically go from first concrete pours for foundations, to spinning blades in roughly two months, while a 50 MW project will often need up to six months of ...



### [How Long Does It Take To Manufacture A Wind Turbine](#)

The construction of a wind farm typically takes 6 to 2 years, depending on the project size and complexity. For a 100 MW power plant, an 8 to 14-month timeframe is typical, with a peak ...



### **A Comprehensive Guide to Wind Farm Construction**

This guide walks you through the entire wind farm construction process, from initial planning to operation, and highlights why JMS Energy is a trusted partner in renewable energy ...

### [How Long Does it Take to Build a Wind](#)



## Turbine: Timeline

Q: How long does it take to build a wind turbine?  
A: Building a wind turbine typically takes between 6 to 12 months, depending on factors such as permit approvals, design complexity, and site ...



## E8: Why does it take five years to build a wind farm?

LHF: Today, we'll focus on their middle-of-the-road pathway--which we'll link to in our show notes. This assumes that by 2050 we'll get most of our energy--about 90%--from wind and ...



## Contact Us

---

For catalog requests, pricing, or partnerships, please visit:

<https://www.firmaskrzypek.pl>

Phone: +48 22 426 71 90

Email: [info@firmaskrzypek.pl](mailto:info@firmaskrzypek.pl)

Scan the QR code to access our WhatsApp.

